



Tucson  
Quilters  
GUILD

# THREAD TALES

Volume 29 Issue 10

OCTOBER 2024

## President's Message

### WHAT INSPIRES YOU?

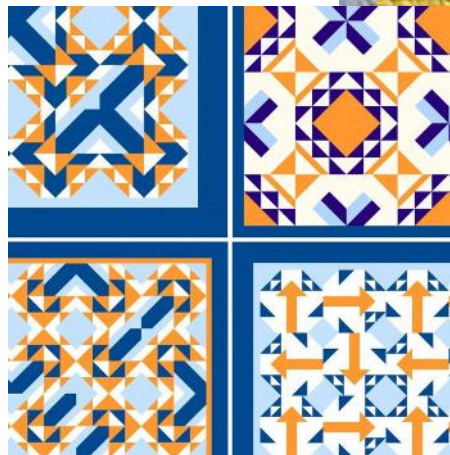
I hope you enjoyed our September program with Lynn Koolish who presented a lot of information on design principles and how to use them in our quilts. I am always impressed by the creativity and mindfulness that exists in our community. But I, for one, still struggle with coming up with a design idea in the first place.

So, I took a stroll through my quilting space to see if I could spot any trends. Well, there was a lot of orange and teal, and apparently a love of prehistoric and Native American (both north and south) iconography. But where can I go from here:

- A new way to use a favorite quilt block?
- Learn a new sewing technique? Please people, take a workshop!
- Incorporate one of the many, many focus fabrics still stacked on my shelves?
- Look through my photos for something or someone to jump out at me?
- Modify the work of another artist or quilter while being very careful not to infringe on copywrites and give credit where it is due?
- Try using technology, specifically AI, to jump start a design?

I'm sure I have only scratched the surface here, but inspiration is everywhere if we just keep our minds and eyes open to it!

Regards,  
Kathy



## October CALENDAR

**Business Meeting:**  
Wed. Oct. 2, 9:00 am  
St. Frances Cabrini

**General Meetings:**  
Tues. Oct. 8, 7:00 pm  
Wed. Oct. 9, 9:30 am  
St. Frances Cabrini

## November CALENDAR

**Business Meeting:**  
Wed. Nov. 6, 9:00 am  
St. Frances Cabrini

**General Meetings:**  
Tues. Nov. 12, 7:00 pm  
Wed. Nov. 13, 9:30 am  
St. Frances Cabrini

### In This Issue:

President's Message	1
Upcoming Programs	2 - 4
Save the Date	5
Guild News	5-6
Guild Fiesta	7-9
Alternative Fabric Chal.	10
Quilting for Others	11
Quilt for a Cause	12
Quilt History	13
Small Quilt Sale	14
Ad	15-16
Quilt Bees	17-18
Board of Directors	19
Guild Basics	20
Block/Pattern of Month	21-22

# OCTOBER PROGRAM

## *Melissa Corry*

Melissa started quilting as a hobby in 2005 but since starting her blog, Happy Quilting, five years later, her hobby has turned into her passion. This passion for quilting has led to creating her own designs that she shares as tutorials, published works, a pattern line, and even books. Melissa loves designing and finds inspiration in just about everything. She and her husband and five children live in Cedar City, Utah.



### **Program**

#### *Fast & Fun Lap Quilts Trunk Show*

Featuring quilts from the book of the same name, Melissa will show how to transform 10" squares into quilts that are fun to make yet have an intriguing, complex look. The designs are perfect for beginners and advanced stitchers alike. See how to make the most out of your fabrics, and learn helpful techniques for construction, and other tips for success!

### **Workshop**

#### *Nordic Nights Curved Piecing*

This is a stunning design with amazing dramatic flair! The offset layout gives it that extra bit of sophistication. It's also fat-quarter friendly, making it easy to grab a bundle or choose fabrics from your stash. Come learn an easy 3-pin method for sewing perfect curves. You'll have a wonderful quilt and find out how fun piecing curves can be!



# NOVEMBER PROGRAM



## *Mary Flynn*

Mary was born in Brooklyn but still misses Hawaii, where she spent most of her 20s. She currently lives in Sonoma County, California, where vineyards cover the hillsides and where her children grew up. Mary is a free-lance illustrator, mostly for quilt books. She designs and make her own quilts, which is about as much fun as she needs to have. She likes beach vacations and thinks not much beats a good road trip. In Mary's words, she's a sexagenarian, but not a vegetarian.

### **Program**

#### *Tales of Woe from the UFO Queen*

UnFinished Objects. We all have them, some more than others. Mary may not have more than anybody, but she does

have more than most, which is why she gets to be queen! It's a dubious honor and it doesn't come with a crown. Hear her reasons why she abandons projects – distraction, boredom, over-confidence, time-blindness – and her hilarious approach to dealing with her “royal affliction”.

### **Workshop**

#### *Laid-Back Paper Piecing*

Paper piecing yields great results but, with this method, you'll also have a relaxing time at the sewing machine! This hybrid technique is an improvement over traditional foundation paper piecing; no sewing through paper and ripping it away at the end. The secret is in the folding back of the paper foundation, allowing it to be used again and again. Choose from two designs that would be difficult with seaming but are simple to sew using the laid-back way!



# DECEMBER PROGRAM

## *Lenna DeMarco*

A quilt collector and historian, Lenna spends her days researching and writing about quilt history as well as presenting programs, lectures, and trunk shows. A former professional dancer and choreographer, she is also a quilt restorer, repairing and conserving quilts for museums, dealers, and private collectors.

Lenna is a past national president of the American Quilt Study Group and founder of the Arizona Quilt Study Group. She was inducted into the Arizona Quilters Hall of Fame in 2016. She has an extensive collection of antique quilts and textiles that she loves to share.



## **Program**

### *For Love of Red & Green: Appliqué Quilts of the 19<sup>th</sup> Century*

One of the most challenging and admired quilt styles of the 19<sup>th</sup> Century is the beautiful red and green appliqué quilt. They were often created as a showcase of a woman's needle skill and the masterpiece of her work. The years 1840 to 1870 marked the high point of this style. We'll explore these quilts with their stunning needlework. Be prepared to be awed!



# SAVE THE DATE

**2024:**

## Upcoming Programs and Workshops

**October 8, 9, 10 – Melissa Corry**  
Program: *Fast & Fun Lap Quilts*  
Workshop: *Nordic Nights Curved Piecing*

**November 12, 13, 14 – Mary Flynn**  
Program: *Tales of Woe from the UFO Queen*  
Workshop: *Laid-Back Paper Piecing*

**December 10, 11 – Lenna DeMarco**  
Program: *For Love of Red and Green: Appliqué Quilts of the 19<sup>th</sup> Century*

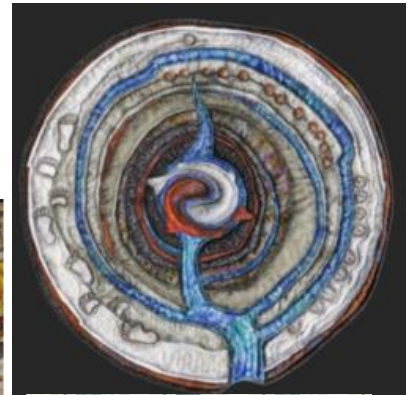
## GUILD NEWS

### President's Challenge

The theme of the 2024 President's Challenge is "Trees and Tree Rings"

#### Rules

- You must be a member of the Tucson Quilters Guild.
- You may use any colors.
- You may piece, applique, embroider, collage, improv, etc. as long as it has three layers.
- The quilt should measure no more than 100 inches around the perimeter. Any rectangular shape of that dimension is acceptable. If your quilt is not rectangular, make sure it will fit in a rectangle that is no more than 100" in perimeter.
- The quilt must have a hanging sleeve and a label containing the quilt maker's name and title of the quilt. Quilts must also be contained in a cloth bag (pillowcase) to protect them from dirt or damage.
- Entry form is due by the October Guild meetings and quilts must be turned in at the November meeting.
- Turn your entry form and quilt in to Kathy Barton, President of the Tucson Quilters Guild.



Contact: Kathy Barton ([president@tucsonquiltersguild.com](mailto:president@tucsonquiltersguild.com))

[President' Challenge Entry Form](#)

Deadline for 2024 President's Challenge Entries: October 8th & 9th (Guild Meetings), 2024.  
Quilt Drop Off: Nov 12th & 13th (Guild Meetings), 2024.

# Melissa Corry October 11<sup>th</sup> Class

Melissa started quilting as a hobby in 2005 but since starting her blog, Happy Quilting, in 2010 her hobby has turned into a passion. Her passion for quilting has led to creating her own designs that she shares as tutorials, published works, a pattern line, and even her own books. Melissa loves designing and finds inspiration in just about everything and anything. Melissa, her husband and their five children live in Cedar City, Utah. To see more of her daily quilting adventures check out her blog Happy Quilting. ([www.happyquiltingmelissa.com](http://www.happyquiltingmelissa.com))

## Class Name: Nordic Nights

**Class Description:** Nordic Nights is a stunning design with amazing dramatic flare. The offset layout gives it that extra bit of sophistication. It is Fat Quarter Friendly making it easy to grab a bundle or pick some fabrics from your stash. Come learn an easy 3 pin method of making Modified Drunkard Path blocks. This is the perfect class if you have been nervous about trying curves, I will show you just how fun piecing curves are!!! I promise!!! And you will have a wonderful quilt to show for it and a new mastered technique. Whatever size you choose, you are sure to have a finish that is just beautiful!!! So come sign up, we are going to have a great time!!!

**Finished Project Size:** The Nordic Nights pattern offers 5 sizes. A baby size measures 27" x 27" and is comprised of 9 blocks. A lap size measures 27" x 76" and is comprised of 12 blocks. A picnic size measures 76" x 76" and is comprised of 16 blocks. A twin size measures 76" x 95" and is comprised of 20 blocks. A queen size measures 95" x 95" and is comprised of 25 blocks.

**Skill Level:** Experienced Beginner

**Pattern and/or Kit Fee:** \$10.00 for Pattern & Template Set – Will be available to purchase in class

**Class Length:** Full Day

**Any special rulers or equipment that will be needed:** A 28mm Rotary Cutter is not necessary but will make it easier.

## BEFORE CLASS ASSIGNMENT

This quilt is **Fat Quarter Friendly**, so you can grab a Fat Quarter Bundle, or choose individual Fat Quarters and make your own collection. When choosing fabrics, you have an endless number of options. The Print fabrics can be as colorful or mono chromatic as you like and they can also be solids if you prefer. And when it comes to a background don't feel like you must use a white solid, you can use colors or prints. Make this quilt your own!!! And just a note - when doing curves, batiks can be a little trickier as they don't have the same stretch as cottons, so if you are a brand-new beginner, I recommend cottons over batiks ;)

**Cut the Print fabrics and the Background fabric according to the directions given you** for the size of quilt you want to make. Group your Print Pieces by the print and then size. I find it easiest to put each Fat Quarter's pieces into a separate baggie stacked smallest to largest. Group your Background pieces by similar sizes. **You are only cutting squares for class;** we will cut the "modified drunkards' path" pieces in class.

**Please have your cutting done by class.** This will allow us to spend the three hours of class time sewing and learning the blocks. If you have any questions at all, either on cutting or fabric selection, please do not hesitate to email me at [happyquiltingmelissa@gmail.com](mailto:happyquiltingmelissa@gmail.com).

	Baby	Lap	Picnic	Twin	Queen
Quilt Size	57" x 57"	57" x 76"	76" x 76"	76" x 95"	95" x 95"
Block Count	9 Blocks	12 Blocks	16 Blocks	20 Blocks	25 Blocks
Assorted Print Fabrics	9 Fat Quarters	12 Fat Quarters	16 Fat Quarters	20 Fat Quarters	25 Fat Quarters
Background Fabric	2 1/2 Yards	3 Yards	4 Yards	5 1/4 Yards	6 1/2 Yards
Binding	1/2 Yard	5/8 Yard	5/8 Yard	3/4 Yard	7/8 Yard
Backing	3 1/2 Yards	3 3/4 Yards	4 1/2 Yards	5 3/4 Yards	8 1/2 Yards

# QUILT FIESTA



Tucson  
Quilt Fiesta!

*Quilt Fiesta 2025*

*Jan. 10-12*

Pima County Fairgrounds

**QUILT FIESTA! 2025 – JANUARY 10-12, 2025**

**DON'T FORGET**

**Quilt Drop-off is January 3<sup>rd</sup> and 4<sup>th</sup> (more details TBA).**

Happy Fall! As the days get a bit cooler I long to spend more time creating in my sewing room. There's no-where I'd rather be. Now it's time to get working on my own quilt entries for the show. The Judged and Non-Judged entry deadline has passed, and we're now so excited to display all of your beautiful quilts in the show. Quilt Fiesta! Committee members are working very hard to create another amazing show and preparations are coming together well. The Display Committee will start meeting this month to arrange the show's ZigZag rows. It's getting exciting.

Our beautiful **Opportunity Quilt** tickets are available for you to pick up and sell to family, friends and neighbors. Tickets are \$2.00 each or 3 for \$5.00. The Quilt will be hanging at every Guild Meeting and will also travel around to local Quilt Shops. We're nearly 1/3 of the way to our sales goal! Way to go everyone. Proceeds from Opportunity Quilt Ticket sales are an important source of revenue for our Guild and help provide Guild programs and workshops you love. Proceeds also support important charitable projects our Guild provides through Quilting-For-Others. **The 2025 Show Pin** is also for sale @ \$5.00 each.

Our guild will once again have a booth at the **Tucson Quilt, Craft and Sewing Festival (Rusty Barn)** on November 7-9, 2024 at the Tucson Expo Center, 3750 E Irvington Rd. We're looking for volunteers to work for two-hour shifts during that event. Please let me know if you are interested in spending a couple of hours promoting the Guild and our Quilt Fiesta! You can also sign up to volunteer with Joline Albaugh at Guild Meetings. This is such a fun event!

The **2025 Annual Theme – Alternative Fabrics** Chair is Diane Hartman. With this challenge, members can throw away the rule book and make up a wall hanging quilt using non-traditional/alternative fabrics to make a one-of-a-kind creation. The **ONLY** requirement is that to be considered a Quilt, it must have 3 layers. Please see Diane's information announcement below with all the details. Entries for this challenge are due at the October meetings with turn in at the November and December meetings.

The show's **Vintage Quilt Turning** will be headed by Ginger Frame. Quilts greater than 50 years old are considered vintage. Ginger is looking for quilts of varied periods and styles, and she wants to show both "best" and "utility" quilts. Entries for this category are due at the October meetings with turn in at the November and December meetings. You can find the entry application and instructions for Vintage Quilts

on the web by typing in “QUILTFIESTA.COM” -> in the menu choose QUILT SHOW -> HOW TO ENTER A QUILT -> VINTAGE QUILTS AND THEIR STORIES. We can’t wait to see your cherished quilts at the show.

The **Fabric Sales** has a 2<sup>nd</sup> Co-Chair. Join me in welcoming Shawna Wallace. This committee prepares items for the “What Will You Make?” booth and runs the fabric sales at the show. Please see below for information about upcoming fabric sale as well as workdays.

Don’t forget to bring donations to Sue Irving for the **Opportunity Baskets**. Several more donations are needed to make these beautiful creations that are always a highlight of our show.

Thank you all for supporting the 2025 QUILT FIESTA! Without your help and support there wouldn’t be a show. We look forward to seeing your beautiful quilt(s) hanging at Quilt Fiesta! 2025. Let’s make this show one to remember!

Kathie Gilbert and Fran Krackow  
Co-Directors 2025 Quilt Fiesta!



## **THE FOLLOWING QUILT FIESTA ENTRIES ARE DUE AT THE OCTOBER GUILD MEETING:**

- \*President’s Challenge – Trees/Tree Rings**
- \*New Member Challenge**
- \*Special Exhibits/Member Challenge – Alternate Fabrics**
- \*Vintage Quilts**

(A PDF entry form is available on the website - Go to [QUILTFIESTA.COM](http://QUILTFIESTA.COM) -> Quilt Show -> How To Enter A Quilt)



## 2025 Quilt Fiesta Show Deadlines

EVENT	2024 DATES
Quilt Entry Forms due (CLOSED)	Sept Meetings (10/11) Postmarked by Sept 13
President's Challenge	* <b>Oct meeting</b> - entries due Nov meeting - turn-in Dec meeting - Guild votes
New Member Challenge	* <b>Oct meeting</b> - entries due Nov meeting - turn-in Dec meeting - Guild votes
Special Exhibits/Member Annual Theme	* <b>Oct meeting</b> – entries due Nov & Dec meetings – turn in
Ribbons	Per ribbon committee
Small Quilt Charity Sales	Dec Meeting
Kids Row	Oct 14
Vintage Quilts	* <b>Oct Meeting</b> – entries due Nov & Dec meetings – turn in
Quilt Drop Off	Jan 3 Cactus Quilts – 11a – 1p Jan 4 Cathey's Down The Block - 11a – 1p
Judging	Jan 6-7 Cactus Quilts
ZigZag Creation	Jan 8 - Fairgrounds
Quilt Hanging/Vendor/Exhibit load in	Jan 9 - Fairgrounds
Show Days	Jan 10-12 SHOW!!!

(Updated 9/26/24)

### OCTOBER GUILD MEETING SPECIAL FABRIC SALE

Quilting for Others received a large donation of quilt shop quality cottons and batiks, so we'll have a FABRIC SALE at the October meetings. Cottons will sell for \$5 per yd and Batiks will sell for \$7 a yd. All yardages will be marked, and we will NOT be cutting any fabric. All sales will go to supporting the guild.

#### OCTOBER GUILD MEETING – SPECIAL FABRIC SALE DETAILS:

Tuesday, October 8th ~6 pm - 7 pm, during the break and for 1 hour after the meeting

Wednesday, October 9th ~8:30 am - 9:30 am, during the break & for 1 hour after the meeting

**We will accept cash, checks and credit cards.**

Thank you to everyone who has been helping at the workdays and for the donations of buttons, pins and notions.

#### FABRIC SALES – “What Will You Make?” Booth WORKDAYS

We are still preparing fabric for sale at the show. We will be packaging 10" squares at the September workday and creating button jars at the October workday.

Friday, September 27th, 10 am - 3 pm at Kathie Gilbert's Studio

Thursday, October 17th, 10 am - 3 pm at Kathie Gilbert's Studio

Kathie's address is 2301 N Sonoita Ave

Thank you for helping us prepare for the 2025 Quilt Fiesta!

Any questions contact me, Beverly Reiter at [delft54@cox.net](mailto:delft54@cox.net) or 520-820-7484

# Alternative Fabric Special Exhibit

Throw the rule book away and make a wall hanging quilt using alternative fabrics. Material examples may include silk, burlap, leather, tulle, faux fur, plastic bags, denim, or even metal. The ONLY requirement is that to be considered a Quilt, it must have 3 layers. All the other options are up to YOU! Be creative and JUMP way outside of the box.

## Rules:

- You must be an active member of the Tucson Quilters Guild to submit an entry.
- The quilt should measure no more than 100 inches around the perimeter. Any shape of that dimension is acceptable.
- This quilt does not count toward your three judged or non-judged Quilt Fiesta entries.
- The quilt must have a hanging sleeve. Instructions are located here.
- Label the quilt with the quilter's name and the title of the quilt. If needed, print this document and hand-sew the paper Quilt ID tag to the back of the quilt.
- Deliver the quilt in a pillowcase-like bag, with a label at the opening. Print this document for the Quilt ID/Pillowcase Tags and instructions.

**Deadline for 2025 Special Exhibit Entries** ~ November 1st, 2024 application due.  
**Drop Off at St. Francis Cabrini Church at the December 2024 Guild meetings.**

Turn in to Diane Hartman. Email: [dhartman69080@gmail.com](mailto:dhartman69080@gmail.com)

---

## Alternative Fabrics Special Exhibit Application Form (Due by November 1.)

Entrant's Name: \_\_\_\_\_ Membership#: \_\_\_\_\_

Entry Title: \_\_\_\_\_

Top by: \_\_\_\_\_

Quilted by: \_\_\_\_\_

Street Address: \_\_\_\_\_

City, State, Zip \_\_\_\_\_ Phone #: \_\_\_\_\_

E-Mail: \_\_\_\_\_

**Description:** Use this space to provide details about your quilt. Please include information about the alternate fabrics you have used and elaborate about the 3 layers you have used to create your quilt. Talk about the technique you used for your creation. Do not use more than 40 words in your description.

---

---

---

# QUILTING FOR OTHERS

"QFO Team wants to thank all of you for your non-stop support this year! In the month of September, we received 30 completed quilts that were donated as follows:

- 4 Marshall Home for Men
- 7 Davita Dialysis
- 5 Peppi's House
- 8 DMAFB Bundles for Babies
- 6 Ronald McDonald House

Also, during September, 82 Pillowcases and 147 Stockings were delivered to Ronald McDonald House. Ronald McDonald house will fill the stockings with additional items for their guests.

A big Thank You to Lynn Rubel for labeling, finding homes and delivering quilts every month!

Members, we couldn't do it without you, your time, and support at the meetings, and other work support days. We continue to appreciate your efforts, and we'll do all we can to support you as well!

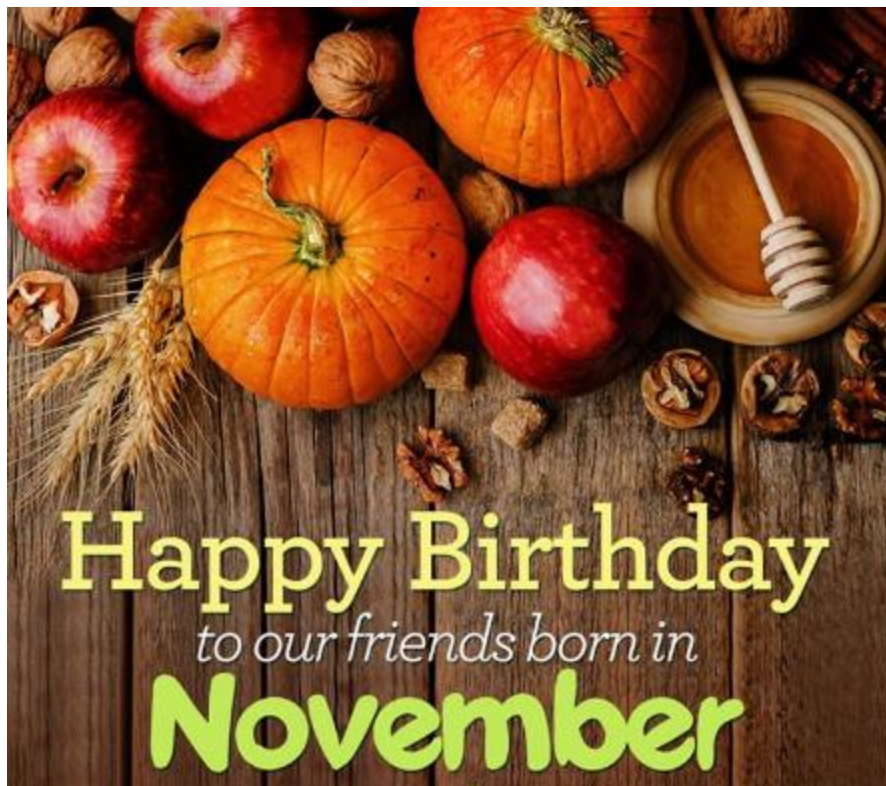
Many Bunches of thanks from your Quilting for Others Team

Kate Verbeke

Kathie Miller

Lynn Rubel

Shellie Whitman



# QUILT FOR A CAUSE

October 2024

## Upcoming Events:



October '24 – Breast Cancer Awareness Month  
Oct. 20, '24 – Making Strides for Breast Cancer Walk  
Oct. 24, '24 – Bag It Breakfast  
Nov. 2-3 '24 – Harlow Gardens  
Nov. 7-9 '24- Quilt, Craft and Sew Event (Rusty Barn)  
Dec 7 '24- Festival of Trees and Lights, AZ Foundation for Cancer  
Dec. 12 '24- Tucson Cancer Conquerors Holiday Tea  
Jan. 10-12 '25 – Tucson Quilters Guild Fiesta

## Quilt For a Cause Presents:

A One Day Bus Trip to *QuiltCon*, Friday, February 21, 2025

We will travel by bus to the Modern Quilt Guild *Quilt Con* in Phoenix, AZ. The cost will be \$85 per person and includes round-trip ride in a passenger bus (from Mountain View Travel) With pickup at two locations in Tucson. The package contains one entry ticket to the show (\$18 value), Drinks, and snacks, entertainment and prizes. The price includes a \$20 donation to Quilt For a Cause, A 501(c) 3 non-profit organization.

## The Details:

Bus: two pick-up stops: Reid Park and Oro Valley Marketplace (locations may change).

Entry: to the *QuiltCon* at the opening of the Convention Center (Phoenix 100 N 3<sup>rd</sup> St. Phoenix, AZ 85004 and return travel to Tucson.

Snacks, drinks, and lots of fun!

We need to reserve seats for 55 attendees by December 31, 2024.

## The Benefits:

Entry tickets purchased in advance, no driving to and from Phoenix, no parking, easy drop off and pick up in Phoenix, a fun experience, and support for a great cause!

**Reserve your seat at [Quiltforacause.org](https://quiltforacause.org)** in the Events Tab. Payment by credit card only. We now accept PayPal. Full refund if the bus trip is cancelled. No refunds after December 31, 2024. You may resell your Seat to someone else if you cannot attend. If we sell out, there is an option for a waitlist spot.

**More information: <https://quiltcon.com>**



Our beautiful new raffle quilt, *Enchanted Garden*, was created by Carol Carpenter. Tickets will be on sale at TQG meetings and other locations. The drawing will be held in January. Because of your generous support, we were able to give away \$50,000 to various organizations that support victims of gynecological and breast cancers here in Southern Arizona.

If you'd like to make a quilt to donate to Quilt For a Cause, in addition to "guy" quilts, our current need is for quilts with a Southwest, or University of Arizona, theme, as well as for table runners or toppers, and **especially small wall hangings**. We also need baby quilts. As always, we are pleased to receive your quilt gifts with any theme to continue our Cause of fighting breast and gynecologic cancers. Please contact us on the website, and we will arrange to get the quilts from you. The quilt donation form is available on our website. Thank you so much!

**Finally, we are seeking new QFaC board members and volunteers. If you are interested in helping or know someone who would be, please contact us. They don't have to be quilters. We need social media experts too!**

Thank you so much for reading about Quilt For a Cause.  
*Francie McMillan (on behalf of Quilt For a Cause)*

# QUILT HISTORY

by Susan Franklin, PhD

## *Crazy Quilts*

Most readers of this article have heard of *Crazy* quilts. Some of you may even own one. Perhaps you don't know that Nancy Kirk founded the *Crazy* Quilt Society. She also wrote the forward to *Crazy Quilts*, written by Cindy Brick. It's a book that I own and treasure. Cindy signed my copy in 2011 when I bought it. She had been the Guild speaker then and I was very impressed by her competence and friendly demeanor. Cindy wrote "For Sue, who is the kindest version of *Crazy* anywhere, I'm so glad that I had a chance to know you better." If you were with me as I write this article and glanced at the book by my side, you'd note all the sticky notes at varied pages marking favorite examples of *Crazies*.

Now to learn about the *Crazy*'s background. In the late 1880's they skyrocketed to fame. They became the epitome of elegance with their fancy stitches and other kinds of needlework. Books, magazines, and other forms of advertising provided examples of the beautiful stitches. In just a few years, the *Crazy* was everywhere! They could be found in parlors, sitting rooms, flung over grand pianos, and also framed. *Webster's New World Dictionary* defines a *Crazy* as a quilt made with many pieces of cloth of irregular shapes and sizes. Some were works of art with meticulous embroidery on each seam and lovely needlework images on irregular patches. I saw a *Crazy* made much more recently than the late 1880s that fits that description. It was made by a husband and wife and a neighbor of my sister-in-law. The wife was gracious enough to show it to me while I was in Texas in early August.

This latest fad was very different from the precise needlework of the past. The *Crazy*'s maker didn't need to follow rules!



What fun for she or he. Fabrics of all kinds were used; cotton, silk, velvet, perhaps artificial or a mix. Most *Crazies* were pieced on a foundation, but some were not. The oldest

*Crazies* were pieced and embellished by hand, although women with sewing machines were "proud" to use them. Cigarette and tobacco silks, photo transfers, ribbons, political items, and often the images of pretty girls were stitched on them. Embellishments could be made with anything that the maker had on hand, obtained from either a friend or a dry goods store. Some *Crazies* are heavily embellished while others are not. On many *Crazies*, odd figures, pictures of children, musical scores, letters or dates fill every available space. Today, makers are likely to prefer fabrics such as silk, velvet, brocade, and sometimes handkerchiefs.

The earliest *Crazies* weren't made for any of the aforementioned uses, but instead a garment. Venice's carnival, which likely originated in 1162, includes a Harlequin, dressed in a colorful patched costume, perhaps made from old clothing. The Harlequin might have an arm of one color and a leg of another. Sometimes, the Harlequin might wear an outfit with many patches, one of the earliest appearances of the *Crazy* style. The Jesters of the Middle Ages also have a similar appearance in their clothing. Their outfits were made from varied bits and pieces of fabrics, often accented with bells and "asses" ears. In the 16<sup>th</sup> century, the Japanese nobility occasionally donned *Crazy* patched clothing. Their kimonos of silk and wool often were hand-painted and embroidered. One kimono from that era consists of *Crazy* patchwork joined in long strips, pieced from gold and silver brocades and also damask.

In the United States, some people believed that a *Crazy* was a matter of necessity. Perhaps there wasn't enough money to buy fabric for the desired item. As necessity is the "mother of invention" homemakers used scraps to make quilts and perhaps some clothing...thus a *Crazy* of one sort or another. Wool more likely was used than linen as linen tends to fray easily. Penny McMorris in her 1984 article about *Crazy* quilts notes that if the prospective maker didn't have scraps, they could be obtained from Boston's Jordan, Marsh, and Company Department Store. A package of fabric squares, 300 or more colorings, could be had for one dollar.

*Crazies* appeared in the early 19<sup>th</sup> century. Sadly, most are undated, however, the *Maryland Historical Society* acquired a *Kaleidoscope* quilt, dated 1834. It has a wide chintz border and the date is cross-stitched on the side. Early cotton *Crazies* are more likely from the Pennsylvania region than any other; whether from the 1880s or earlier. Contained *Crazies*, those within squares, surrounded by sashing and corner stones have a very different look from other *Crazies*.

# SMALL QUILT SALE

## *Small Quilt Charity Sale*

Happy Fall to everyone! Hopefully we can enjoy some cooler weather while we prepare for the 2025 Quilt Fiesta and the Small Quilt Charity Sale. Small quilt donations can be turned in at monthly TQG meetings where we will also provide orphan blocks (Lamentables) to be finished as Lovelies for our Charity Sale. Quilts should be small and can be wall hangings, table runners, doll quilts and other creations. Please include an entry form so we know who to thank!!

The beneficiary Charities for the 2025 SQCS are shown below- please see their websites for more information!

**Literacy Connects.** [www.literacyconnects.org](http://www.literacyconnects.org) -Another program offered is Reach Out and Read. This is a national evidence-based program that promotes early literacy and school readiness in pediatric exam rooms by giving new, developmentally, and culturally appropriate books to children and advice to parents about the importance of reading aloud. Reach out and Read operates in Cochise, Pima and Santa Cruz counties, as well as the Tohono O’Odham Nation.

**Casa Alitas.** [www.casaalitas.org](http://www.casaalitas.org) - Casa Alitas provides services (food, clothing, shelter) to legally processed asylum-seekers in Tucson, after their release from Border Patrol. People, mostly families, travel from Central America, South America, Mexico, India, Nepal, Africa, Eastern Europe and other places. They have often traveled long distances seeking protection from persecution, war, violence, famine, economic collapse, or other severe hardship. They are screened for eligibility to legally stay in the U.S. while pursuing the immigration process.

Thank you all in advance for your support of these essential agencies! For questions, please contact us at [quiltfiesta@tucsonquiltersguild.com](mailto:quiltfiesta@tucsonquiltersguild.com).

**2025**

### **Small Quilt Entry Form** (For Completed Donations)

Quilter's name(s): \_\_\_\_\_

Address: \_\_\_\_\_ Phone # \_\_\_\_\_

Email: \_\_\_\_\_

Quilt Title: \_\_\_\_\_

Quilt width: \_\_\_\_\_ Quilt length: \_\_\_\_\_

Artist’s statement about this quilt: (50 words or less)

---

---

---

OFFICE USE ONLY

QUILT NUMBER \_\_\_\_\_

**FREE SHOW & PARKING!**

# 15th Annual Tucson Quilt, Craft & Sewing Festival

Bigger, Better & more Creative than ever!



**FREE CLASSES & DEMOS!**

For additional show information visit our website at:  
[www.quiltcraftsew.com](http://www.quiltcraftsew.com)

**SEW CREATIVE & COLORFUL!  
 LOTS OF EXCITING NEW BOOTHS!**

## Tucson Quilt, Craft & Sewing Festival

at the Tucson Expo Center (Not the Convention Center)  
 (3750 E. Irvington Rd / exit 264) **FREE PARKING!**

**NOV 7, 8 & 9, 2024**

Thurs & Fri 10 am - 5 pm, Sat 10 am - 4 pm

**SEWING • QUILTING • NEEDLE-ARTS • CRAFTS**

See and buy the latest supplies, fabrics, notions patterns and tools... all under one roof!

**\$500 CASH** given daily at 9:45 am! Be in line early for your chance to win big / \$500 split between 20 winners each day!

**FREE ADMISSION!**

Bring your creative friends and family for a free & fun filled day!

**Tucson, AZ - November 7 - 9, 2024**

3750 E. Irvington Road  
 Tucson, AZ 85714  
**FREE PARKING**



**ADMISSION: FREE**

**HOURS: 10 AM - 5 PM Thursday & Friday | 10 AM - 4 PM Saturday**



**Come join us at our Festival in Tucson - At the Quilt, Craft & Sewing Festival you will find a wide variety of Sewing, Quilting, Needle-Art and Craft supply exhibits from many quality companies.**

**SEWING | QUILTING | CRAFTS | NEEDLEARTS  
 MAKE 'N TAKES - FREE DEMOS | DAILY DOOR PRIZE DRAWINGS**

## We CAN HELP GROW YOUR QUILT BUSINESS. Advertise with us.

Do You Operate a Quilting Related Business? We are pleased to offer advertising as a member benefit. Your listing will appear on our website under Resources > Quilt Services. The Board receives questions from the general public through our website asking for information on local longarm quilters, sewing machine maintenance, or other quilting related products. If you would like to be added to this page on our website, please send an EMAIL to me at [website@tucsonquiltersguild.com](mailto:website@tucsonquiltersguild.com) Include the following information: Business Name Service/Product that you Offer; Website; EMAIL; and/or Phone Number. This opportunity is open to MEMBERS ONLY. But if you know of someone who might also want to be included, they are certainly welcome to join the Guild for just \$50 a year and we will be happy to advertise for them. –Kathy Barton – Webmaster

### PLACE YOUR AD IN OUR NEWSLETTER

Do you have a sewing machine or other quilting accessories you would like to sell?

**Members: \$5/ad, for quilting ad/sewing related items.**

Do you have a quilting service you provide? Quilt related business/service:

Business Card— 3.5” x 2” (Horizontal or Vertical) **\$10/issue**

1/4 Page Ad—4.25” w x 5.5” h **\$15/issue**

1/2 Page Ad—8.5” w x 5.5” h (horizontal) 1/2 Page Ad 4.25” w x 11” h (vertical) **\$30/issue**

Full-Page Ad 8.5” x 11” **\$60/issue**

**Non-members should add \$5 per category.**

For additional information and/or to reserve space in the next newsletter, please contact the newsletter editor at [newsletter@tucsonquiltersguild.com](mailto:newsletter@tucsonquiltersguild.com) . Send checks to the TQG Treasurer

at P.O. Box 14454, Tucson, AZ 85732





# Bee Groups and Newly formed Bee Groups . . .

have spaces waiting for you to join in the quilting/ stitching, conversations and laughter. A few Bees have space for you and a friend or two: Far Eastside Bee that meets at Palma's Studio is ready to welcome you on your quilting adventure. Gather at Palmas the first Tuesday of November 7, 2023 at 1:00PM, 548 E Drawdown Trail, Corona De Tucson. Looking forward to seeing you at Palma's Studio an awesome location and view of the mountains.

The Westside Bee meets the third Tuesday from 6:00PM-8:30PM at the Catus Quilt Shop 6032 Oracle Rd. More information at the Welcome table – stop by and see Joyce with any questions or talk with Palma Davis, Far East Side Bee Host or Betty Jordon WestSide Bee Host.

**ALL LISTED BEES ARE OPEN TO NEW MEMBERS**

## EASTSIDE BEE

Vicki Moore  
748-7219, 241-7290 Ask Vicki  
for location 1st Thursday, 6:30 PM



## NORTHEAST 9 PATCHERS

Janice Jones  
[tomjan620@msn.com](mailto:tomjan620@msn.com)

## PACIFIC RIM QUILTING B

Contact: Kathryn Wald ([kathrynwald@yahoo.com](mailto:kathrynwald@yahoo.com)) & Saw Peng Laracuent ( [sp1602@hotmail.com](mailto:sp1602@hotmail.com))  
Where: The Quilt Basket, 6538 E. Tanque Verde #130; 1st Tuesday, 10 am.

## EAGLE WINGS QOV BEE

Char Gasker  
[cgasker@gmail.com](mailto:cgasker@gmail.com)  
8421 Broadway Blvd.  
at Quality Quilters  
4th Thursday of the month



## ART QUILTERS:

Karen Fisher—520-360-9600  
7820 E. Broadway—SW corner of Broadway and Pantano  
3rd Wed. of month 10 am — Noon



## BROADWAY BEEZ:

Contact: Claudia Rickel, 520-544-9436 (home)  
[cricke107@gmail.com](mailto:cricke107@gmail.com)

The 3<sup>rd</sup> Friday Eastside Daytime Bee 10:00-2:00 at Quality Quilterz, 8421 E Broadway Blvd, Tucson

**ALL LISTED BEES ARE OPEN TO NEW MEMBERS**

**ALL LISTED BEES ARE OPEN TO NEW MEMBERS**



**MONDAY NIGHT QUILTERS:**

Marie Morris 520- 403-6208  
520-623-0123



**NORTH OF THE BORDER:**

Mary Anne Strauss  
520-429-1340  
Call for location info  
Every Thursday - 9:30 AM — Noon

**Open to new members**



**NU-BEEs**

Contact : Joyce Holley 816-223-4454

**Westside Nighttime Bee** The 3<sup>rd</sup> Tuesday 6:00-8:30 Cactus Quilt Shop 6032 N Oracle, Tucson.

**Far Eastside NU Bee** The 1<sup>st</sup> Tuesday starts 1:00 pm

Studio and location of Tucson Quilting Retreats of Palma Davis at 548 E Drawdown Trail, Corona de Tucson, AZ 85641

**SOUTHEAST BEE**

Meets the 3<sup>rd</sup> or 4<sup>th</sup> Wednesday from 10-2 at the Esmond Loop Library on Mary Ann Cleveland. Contact Marilyn Hendricks ([bbcody1951@outlook.com](mailto:bbcody1951@outlook.com)) or Pamela Golliet ([sonoranskyquilting@gmail.com](mailto:sonoranskyquilting@gmail.com)) for exact dates and information.

**NORTHWEST STRIPPERS**

Meets in members homes the first Thursday of the month from 3 pm to 5 pm. Contact June Vance at 520 744-2391

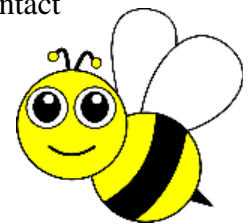
**OLD PUEBLO QUILTERS BEE**

Meets every 2nd Saturday at 1:30 with a member as hostess for the month. Contact Gretchen Galbraith , secretary at [ggmiracles39@gmail.com](mailto:ggmiracles39@gmail.com). Our group is one of the "oldest" Bees in Tucson. We meet at the hostess' home. Members mostly reside in the NE/SE side of Tucson. As one of our projects each year, all members design and contribute to making a group charity quilt.

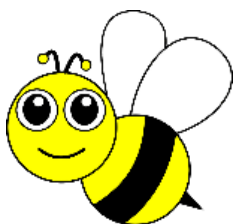
**BEE KEEPER**

For more information about any of the Bees listed or how to start you own bee, please contact our personal bee- keeper.

**Karen Fisher, [bees@tucsonquiltersguild.com](mailto:bees@tucsonquiltersguild.com)**



**ALL LISTED BEES ARE OPEN TO NEW MEMBERS**



# TQG BOARD of DIRECTORS

President	Kathy Barton
Vice President	Joyce Holley
Recording Secretary	Becky Groene
Corresponding Secretary	Sandy Schuster
Treasurer	Mimi Pollow
Membership	Pamela Golliet
Programs Directors	Kelly Godbout & Helen Frost
Bee Keeper	Karen Fisher
2025 Quilt Show Director	Kathie Gilbert
2025 Quilt Show Co-Director	Fran Krackow
Historian	Joyce Harrison
Hospitality	Francie McMillan
Library	Janet Chumbley
Newsletter	Peg Clampet
Pattern of the Month	Betty Jordan
Quilt-a-Thon	Kate Verbecke & Kathie Miller
Quilting for Others	Kate Verbecke & Kathie Miller
Technology	Jean Firestine
Website	Kathy Barton



**Volunteers Needed**

# TUCSON QUILTERS GUILD BASICS

The mission of the Tucson Quilters Guild is to perpetuate the art of quilting, encourage the practice of quilting, and to stimulate interest in the art form.

<b>Who:</b>	All members
<b>What:</b>	<b>Business Meeting:</b> First Wednesday of every month in Church Classroom <b>General Meetings:</b> Second Wednesday of the month or the Tuesday before 2 <sup>nd</sup> Wednesday
<b>When:</b>	<b>Business Meeting:</b> 9:30 AM ~ 10:30 AM <b>General Meetings:</b> Tuesday Evening – 7:00 PM ~ 9:30 PM Wednesday Morning – 9:30 AM ~ 12:00 PM
<b>Where:</b>	<b>St. Frances Cabrini Church</b> <b>3201 E. Presidio</b> Near Fort Lowell and Country Club
<b>(How):</b> Parking	Guild members are asked to refrain from parking in the spaces in front of the Parish office. The Church wants these spaces to remain open for Church members who have business to attend in the office. This is the small building to the east of our meeting room. <b>NOTICE: Tuesday Evening attendees:</b> The Church's Family Classes are in session, please <b>DO NOT PARK IN THE FRONT LOT.</b> Use the side or rear lots.
<b>Why:</b>	Come to get involved with all aspects of the Guild, to make new friends, learn new quilting skills, share, and most of all, to have <b>FUN</b> .
<b>Cost:</b>	<b>Members: \$50 / year</b> (Due in January)

Please remember to be kind to fellow members with allergies to scents and perfumes. Please attend the meetings fragrance/ perfume free. It means that another member can attend.

Due to copyright concerns, photos may be taken before the meetings, during the breaks, and after meetings.

**No photography or videos are permitted during the guest speaker presentations.**

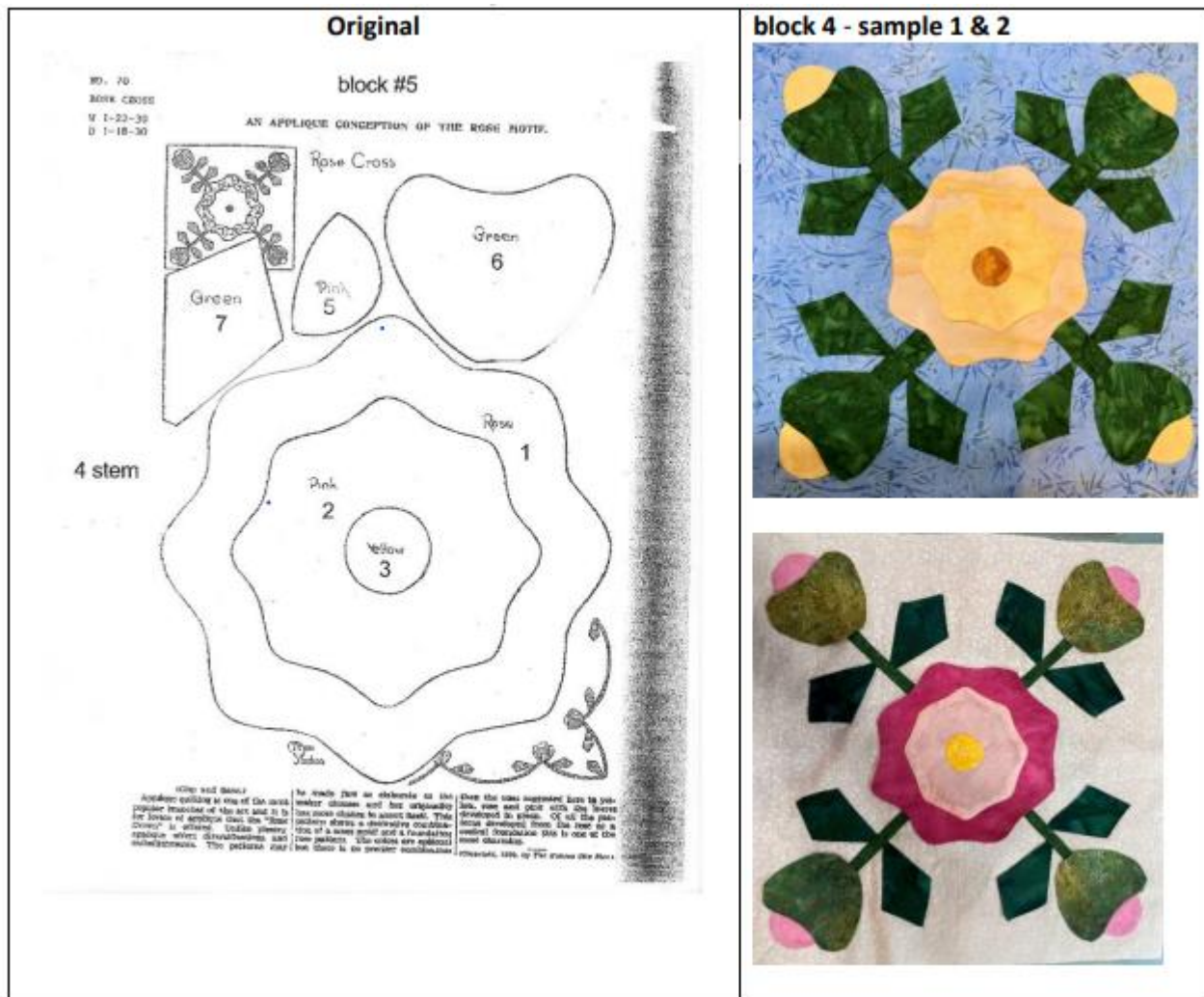
**Submission deadline for the next newsletter is the 20<sup>th</sup> of the month.**

Please send your articles/ads to the Newsletter Editor at [newsletter@tucsonquiltersguild.com](mailto:newsletter@tucsonquiltersguild.com)

Please silence your phone during the meetings. Use the Do Not Disturb (DND) function on your phone or go to Google Play or Apple App Store to find a program to temporarily hush the phone.

# Tucson Quilt Guild Block of the Month Block 5 –

Kansas City Star Quilt Pattern Collection; Published January, 1930 Rose Cross - Appliqué quilting is one of the most popular branches of the art and it is for lovers of appliqué that the Rose Cross offered. Unlike piecing appliqué offers diversifications and embellishments. The patterns may be made just as elaborate as the maker chooses and her originality has more chance to assert itself. This pattern shows a decorative combination of a cross motif, and a foundation rose pattern. The colors are optional but there is no prettier combination than the ones suggested here in yellow, rose, and pink with the leaves developed in green. Of all the patterns developed from the rose as a central foundation this is one of the most charming.

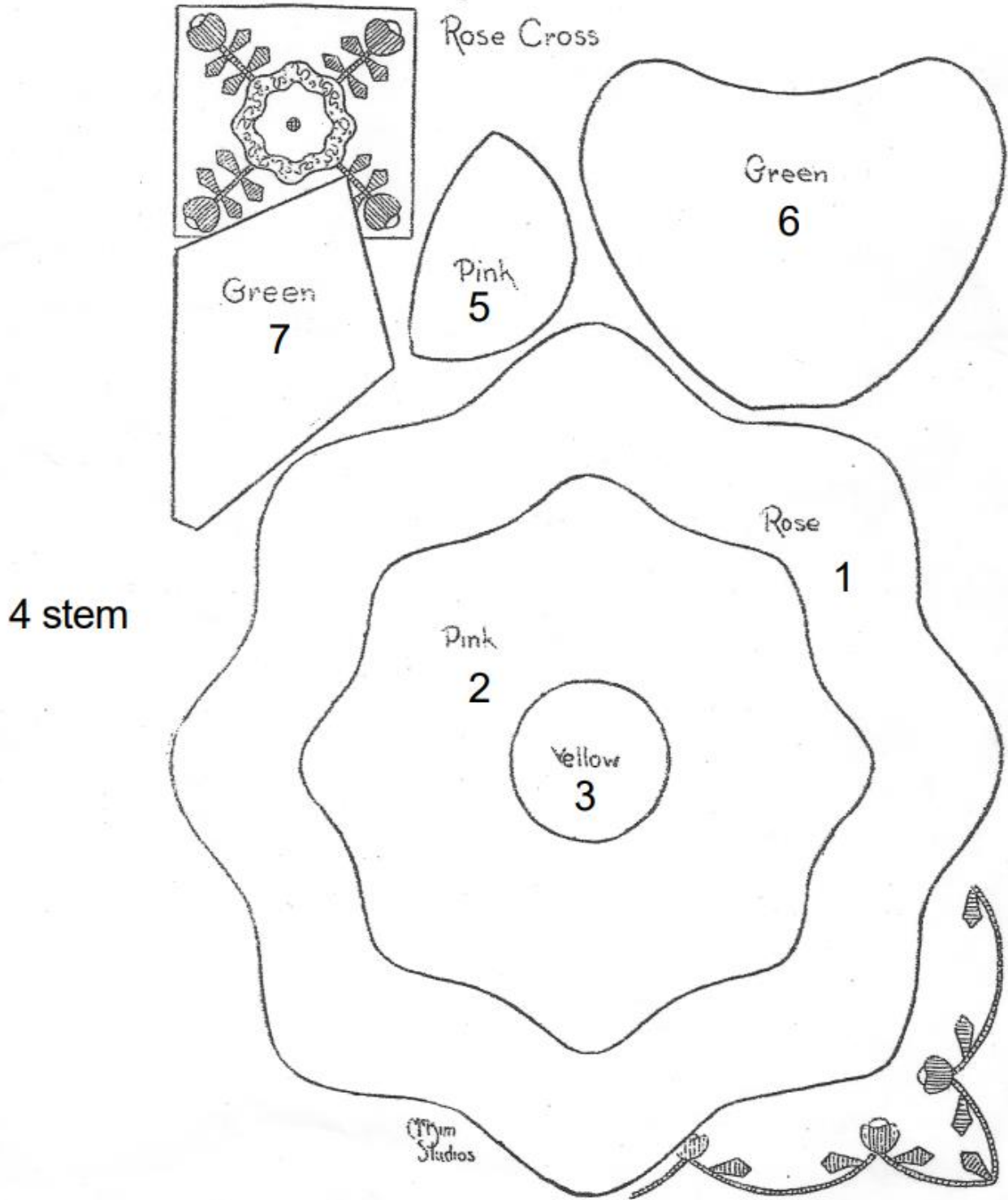


## FINISH

You can use whatever Appliqué method you would like. Start with 13” square for background. Mark  $\frac{1}{2}$  “on all sides of background and keep Appliqué on inside of  $\frac{1}{2}$  “markings. Pattern pieces are finished sizes. Make some stems mine are approximately  $\frac{3}{4}$ “ finished. Put stem ends under flower and buds. Make only 8 leaves (2 per petal) instead of 16. Layers are numbered but put tips of stem ends under flower and buds, also leave tips under stems. Finish Appliqué. Trim block to 12  $\frac{1}{2}$ ” unfinished, 12” finished

Any questions please contact Betty Jordan at 207-318-4396, [bettyjordan444@gmail.com](mailto:bettyjordan444@gmail.com) or Debra Searlata at 818-281-0052, [dsscarlata@gmail.com](mailto:dsscarlata@gmail.com)

AN APPLIQUE CONCEPTION OF THE ROSE MOTIF.



Any questions please contact Betty Jordan at 207-318-4396, [bettyjordan444@gmail.com](mailto:bettyjordan444@gmail.com) or Debra Searlata at 818-281-0052, [dsscarlata@gmail.com](mailto:dsscarlata@gmail.com)