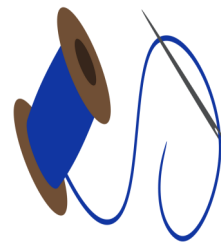




Tucson
Quilters
GUILD

THREAD TALES



Volume 26 Issue 9

September 2021

PRESIDENT'S MESSAGE

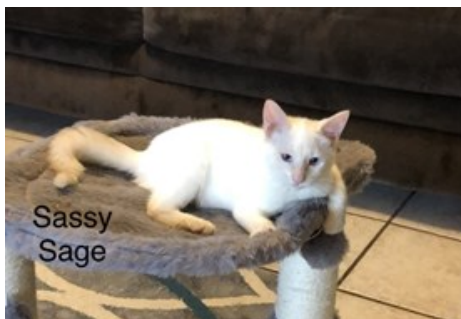
Dear Quilters,

We are meeting in person!!! We have not met in person since March 2020, and it will be so good to see everyone. I hope you are as excited as I am for September 7 or September 8, 2021, to arrive. We are going to require masks at each meeting even if you are vaccinated. We are doing this because we care about you and your health. You will be able to show off one of the wonderful masks you have made or bought. Zoom has allowed us to hear wonderful speakers with old ideas revisited and new ideas. However, there is nothing like seeing the speaker and looking at her quilts in person.

Some of you know that I foster kittens and broken cats for Southern Arizona Cat Rescue. In fact, if you attend the evening meetings, you may have seen some of the bottle babies I have fostered. Early this Spring, beginning of kitten season, I took five one-day old babies to foster: bottle feedings every two hours, stimulating so they can pee and poop, keep their environment warm, treating them when they got sick, etc. As the season progressed, I picked up additional fosters and now have eleven kittens and one mama cat that are ready for adoption this week. In spite of the heartache of losing a little one, the joy of the survivors cannot be beat. Sassy Sage is the only survivor of the original litter, and she is so very sweet. As soon as you pick her up, she begins purring and wants to be held.

In closing, if you have not started President's Challenge or turned in the quilt block for Karen Fisher, our outgoing President, please find instructions in this Newsletter and check the details.

Marie Morris
TQG President



SEPTEMBER CALENDAR

Business Meeting:

Wed, Sept. 1, 9:30 am

General Meetings:

Tues, Sept. 7, 7:00 pm

Wed, Sept. 8, 9:30 am

Workshop (for online pre-registered entrants only)

Thurs, Sept. 9, 9:00 am to 4:00 pm

OCTOBER CALENDAR

Business Meeting:

Tuesday, Oct. 5, 6:30 pm

General Meetings:

Tues, Oct. 12, 7:00 pm *

Wed, Oct. 13, 9:30 am *

****Please note that Quilt Fiesta entries are due at these meetings!***

Please note that these are events are subject to change due to the current COVID-19 pandemic.

Inside this Issue

Programs	2, 3
Guild News	4-13
President's Challenge	9
TQG Bees	15
TQG Meeting Info/Basics	16
TQG Board Members/Ads	17-18
Pattern of the Month	19-21



TQG PROGRAM INFORMATION

September Speaker and Workshop

Joyce Hughes

(This is a live event but since we won't be meeting until September you must register on-line for the workshop).



Joyce is a self-taught quilter and fiber artist. Her first quilt was a tee shirt quilt which she enjoyed making but felt limited in the ability to express herself artistically. Within several months she began designing pictorial landscape quilts using raw edge applique. Never knowing the rules, she broke a lot of them, but with exciting results.

Amazingly, her first art quilt was entered into a national show and won a blue ribbon. This had led to numerous awards and opportunities in the quilting world. She loves free motion quilting and thread painting. Currently she has fixed on working with fabric panels to create dimension and texture with threads and embellishments, creating a style all her own. Frequently, she says, these panels are looked at and passed over, often with comments such as "What do you do with this?". "It is so big." "The colors are dull". But, with a little embellishing and thread painting, Joyce says that any panel can become a work of art!

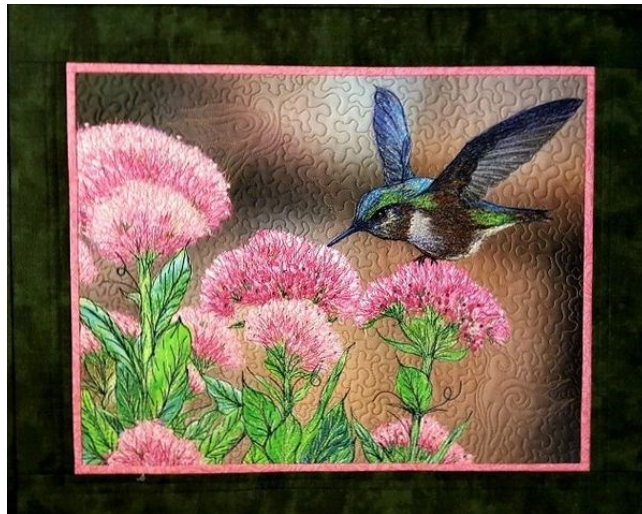
TQG PROGRAM INFORMATION

Lecture “My Journey into Quilting”

This is an open and inspiring talk about how Joyce started quilting, leading into art quilts with thread painting, and finally her work with panels. Showing many “before and after” art quilts she also explores how panels can be used as personal projects. You will learn how she prepares the panel and how she layers threads to achieve different effects on the quilts. Then, with ribbons, markers, paint, crystals, and whatever else she can think of, she will show you how to make any panel a unique piece of art.

Workshop Dimensional Thread Painting

Yes, you are creative, and yes, you can do this on your domestic sewing machine! In this class, students will start with a beautiful hummingbird panel and will learn the proper steps of dimensional thread painting while exploring thread selection, machine set-up, bobbin work, embellishment and overlays.



Can't attend the class or still want to know more? Our Guild library has both of Joyce's books, "Thread Painting a Garden Quilt" and "Creating Art Quilts with Panels". Check one out and get painting (thread that is)! **DON'T FORGET TO REGISTER ONLINE!**

Kathy Barton – Programs Co-Chair

GUILD NEWS

Arizona Documentation Report



By Susan T. Franklin, PhD

Kay and Lori Lee Triplett, in their book, *Indigo Quilts, 30 Quilts from the Poos Collection*, note that Indigo was Africa's gift to the world. Dr. Dickey, a speaker at an *Arizona Quilt Study Seminar* several years ago noted that indigo references go back to ancient times. In 2400 BC, an indigo fragment was discovered in King Tut's tomb.

Rivalry about "first" to discover indigo was strong with varied country's claiming the honor. Peru believed it had that honor Spain and Portugal also produced indigo and sold to other countries. England soon joined the group and expanded its dye stuff with indigo. In the late 1600s, Britain decided to establish plantations in India in order to grow its own crop of indigo plants. It was cheaper to do so than to buy from either Spain or Portugal.

Also, in 1680, the Dutch tried to grow indigo plants in the New York area, but with little success. Probably due to the climate. More success occurred in 1663, in Charlestown, North Carolina. In the *American Quilt Study Blanket Statements* for summer, 2017, it notes that Eliza Lucas Pinckney had great commercial success with growing indigo. Eliza lived in South Carolina, a much kinder climate to grow the indigo plant. She also was known for her consistent record keeping of all she did with her gardening. Well recognized as a botanist, both she and her husband had been educated in England and had a wide circle of influential friends. Eliza provided a motivating force for the colony's indigo economy.

Prior to the Revolutionary War,

a million plus pounds of indigo were shipped to England annually. However, after the war, began, the market for indigo was lost. John Hewson, who came to the States from England, had a business with his partner, William Lang. In that business, they printed blue (indigo) handkerchiefs and also "very neat gown patterns of the same color", per a notice in the *Pennsylvania Packet*, November 9, 1779. John and his partner knew that indigo would withstand the test of time. It wore well as well as being colorfast.

Fashions in color changed over time. The quiltmaker loved printed fabrics, in the latter part of the 18th century and early part of the 19th, chintz was popular. Then, double pinks, purples, quilts of red and green, and in the last half of the 19th century the combination that took over was quilts of blue and white. Indigo, of course! Some people theorize that the color combination also became popular due to the temperance movement. The *Women's Christian Temperance Union* (WCTU) used the colors, blue and white. Many quilts from this era are made in the *Drunkard's Path* pattern.

Synthetic indigo entered the market in 1897. Prussian blue happened because of a mistake by a German chemist. Sometimes good things occur by accident. It became the color of the Prussian army. Its popularity was assured. In 1832, it was used to dye wool and by the 1840s, began to appear in quilts.

Lighter shades of blue appeared late in the 19th century. They were sometimes in shirting prints, frequently seen in quilts of the time. Indigo is similar to Turkey Red; they each are colorfast!

I collect quilts and have a number of crib quilts with indigo as well as a large circa 1890 - 1900 *Burgoyne Surrounded*. My crib quilts include: 1) *Ocean Waves*, Circa 1870; 2) *Pine Burr*, Circa 1880s; 3) *Indigo and White Basket*, Circa Last Quarter 19th Century, and 4) *Ladders*, Circa 1890.

How about you?

If questions occur, please con-

tact either Sue Franklin at 520-490-4721 or by email at suevet-te63@gmail.com or Terry Gryzb-Wysocki at 520-904-2218 or terry-gw@mindspring.com

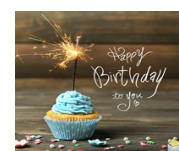


MEMBERSHIP NEWS

Many wondered what would be done with the information that was provided on the New Membership Form. Thanks to Linda Begega who sorted through all the forms the lists of volunteers and birthdays have been sorted out and you will be hearing from the committee chairs soon. Also, in each Newsletter you will have the opportunity to wish Guild Members a Happy Birthday. A monthly Birthday List will be published in the upcoming Newsletters. Here is the September Birthday List. If you would like to give a card you can drop them off during our in-person meetings beginning in September at the Membership/Welcome table, place in the Birthday card Basket and the Birthday Members can pick up their cards at the same table.

Happy Birthday to:

Colleen Babcock	Sept 28
Kathy Barry	Sept 26
Russ Beasley	Sept 13
Jean Biddick	Sept 26
Lisa Fryxell	Sept 22
Janice Graham	Sept 20
Julie Hallquist	Sept 17
Clara Hill-Pfeifer	Sept 28
Michele Jiha	Sept 13
JoEllen McKearney	Sept 24
Marie Morris	Sept 1
Kathy O'Brien	Sept 30
Chris Parkhurst	Sept 19
Becky Rehl	Sept 7
Swan Sheridan	Sept 3
Luanne Wood	Sept 7



GUILD NEWS

QUILTING FOR OTHERS

Shellie Whitman is stepping aside as primary fearless leader of the Quilting For Others group. She will continue to offer insights and suggestions to the group. Taking over as a somewhat capable dynamic duo are Kate Verbeke and Kathie Miller. It will take two of us to fill Shellie's shoes, (even though she has tiny feet) as she was incredibly organized! The rest of the members are Lynn Rubel, Joyce Harrison, Lisa Fryxell, Sue Burns, Betsy Boatright and Linda Begga.

Topic 1 - 2021 Quilting For Others Drawing - Quilts, Tops and Pillowcases

A very special thank you to our Membership! Your participation in our Drawing over the last seven (7) months yielded:
220 Ready To Deliver Quilts,
114 Tops to be Quilted,
183 Pillowcases,
35 Laundry Bags to Candlelighters, and
9 Dog Beds.

Another special thank you to our Team for bringing you this opportunity through their hard work and preparation each month!

QFO Drawing Statistics Jan - July 2021

Our Grand Prize Basket valued a \$200 went to Joyce Christianson. Joyce also earned 3rd place in our drawing. The placements went as follows:

1st Place - Elena Bennett, Quilter's Market Gift Card Valued at \$25

2nd Place - Rhonda Borders, Quilter's Market Gift Card Valued at \$20

3rd Place - Joyce Christianson, Quilter's Market Gift Card Valued at \$15

4th Place - Karen Kelter, Quilter's Market Gift Card Valued at \$10

Additionally, each 1st - 4th Place Winner received a Boxed Gift with several items. Each box was valued at an additional \$50.

Topic 2 - It's Time for Holiday Stockings and a New Holiday Stocking Drawing!

Every year from as far as I can remember, our Guild has made Holiday Stockings for the Candlelighters Children's Cancer Foundation. These stockings are distributed to children undergoing Cancer treatment throughout the Tucson community.

So, what does that mean for our Guild Members? Well, another Drawing of course! So, here's the details:

PRIZE: One Free Tucson Quilters Guild Class anytime during the year of 2022! Prize is valued up to \$35 and does not include any additional class supplies or instructor fees.

QUALIFICATIONS:

For every 1 Holiday Stocking completed and turned-in from September through our December meeting, You will earn 1 entry into our Holiday Stocking Drawing. One for One!

We are making kits that will be available beginning with the September 2021 Live Meeting!

Fabrics - We are using fabrics that have been donated to us, but feel free to use your own too!

Fabric and Pattern will be provided.

We hope you'll continue to surprise us! We need and appreciate you very much!

Topic 3 - Many thanks to Kim Votava, owner of Purple Sand Quilting Studio for the use of her facility to store a very sizable fabric donation from a family of a former guild member. Kathie, Lisa, Joyce, Shellie and Kate spent several days pouring through +30 moving boxes of fabric, sorting, measuring, folding and wrapping fabric to store in our guild storage unit. We also collated usable scraps of fabric into small packages and took them to the Assistance League for their fabric section. We received another sizable donation soon after, and that has been collated and stacked in the storeroom as well.

Topic 4 - We want to give back to the guild; so, I invite anyone in the guild to set up your own private shopping spree in the storeroom with one of us to pick and choose fabrics for your own ideas. Contact Kate for details if you are interested.

Topic 5 - Many thanks to Suzanne Irving for donating her time and energy to organize the longarm quilting of the dozens of quilt tops that would have been used in our Quilt-a-Thon event this year.

As always, we welcome your input for suggestions to improve our work as we strive to fulfill our mission of giving to the community.

On behalf of the entire QFO team, Kate Verbeke

Quilt Fiesta Update

By Pam Golliet, Chair

The committees are working tirelessly on getting everything ready for our next Quilt Fiesta! We have a few updates too.

We have a volunteer for the **Co-Chair position, Jean Firestine**. You will have a chance to meet her and vote to confirm her at the next Quilt Show Meeting.

Remember, only Guild members can submit quilts to show. If you haven't renewed yet, better do so now. The Fiesta is open to anyone, but the quilts chosen to show are only from members.

Here are some dates so you can plan your entries and volunteer shifts. **We need the entire guild to help!**

September: Sign up for volunteer shifts. Sell Opportunity Quilt Tickets!

October: Quilt Entries may be brought to the October guild meetings on the 12th or 13th. Mail-in entries must be post-marked by October 15th. **All entrants must be paid TQG members by October 1, 2021.**

November: President's Challenge quilts due November 10th. Keep signing up for volunteer shift, completing entry quilts, and donating items for small quilt auction, baskets and New Member Challenge, etc. Send out postcards and bookmarks and talk to your friends about the show!

December: Small quilt Auction quilts due this month. Make sure your calendar is set for the Quilt Fiesta! Keep selling those tickets for the Opportunity Quilt.

January: Turn in your quilts for the show at the January meeting, the 11th and 12th.

Quilt Fiesta is January 28-29, 2022 at the Old Pueblo Hall at the Pima County Fairgrounds.

9 am -5 pm both days.

January 29th from 6pm to 7pm is pick up your quilt time at the Fairgrounds.

Remember we want ALL of your quilts, not just the "show quality" ones. People look and want to see quilts they could make and not be intimidated. The quilts do not have to be completely finished as long as we can get a good photograph of them. Of course, they do need to be finished before the show! Any questions can be directed to Kathie Miller (420-743-7025) or Karen Kelter (520-319-0326)

Small Quilt Auction items can be donated at meetings once we resume.

Basket items also can be donated at meetings. We need new unwrapped items and not all quilting related! This is a big fund raiser, so clean out those sewing rooms of items you just never got around to using! Look for other types of things too, like kitchen gadgets, sports items, gift cards etc.

Hostess and more signups will begin in September! We need the entire guild to help in some way to make a successful show.

Remember that there is RV parking at the Fairgrounds. Contact the Pima County Fairgrounds for details. Very reasonable charges too. There are also a few B&Bs nearby.

Quilt Academy:

At our 2022 Show we will offer a Quilt Academy, an area for our members and guests to see and hear short presentations by our many talented member quilters.

These presentations may include Mini Trunk Shows, Demos of Techniques, and Product Demonstrations. Product demonstrations may be done by either vendors or members--as a quilter you may have been very successful with a method or tool and want to share your success with it. Each presentation will be 30-40 minutes long. These will all be in a separate space where you will have seats for a small audience as well as table and display space to

show what you are doing.

I need volunteers to contact the Quilt Fiesta committee to volunteer to fill a spot in our Academy. We do not yet know how many presentations we will be able to accommodate, but I hope to hear from ALL of you who love to share your work and talk about your success in quilting (on behalf of Karen G. Fisher).

A Word from the Judging Committee

(by Karen Kelter)

Remember, that all entrants must have paid membership dues by October 1, 2021, in order to enter a quilt. You may enter 3 quilts, and you may submit 2 of those to be judged if you wish. I want to encourage each and every one of you to enter at least 1 quilt. We have this show in order to give us an opportunity to show off our quilts that we have spent a great deal of time and money on. It is exciting for all of us to see our work on display for everyone to enjoy. We could not have a show if we did not have your quilt to display; we get ideas from each other; we get inspiration from the various fabric choices, use of color, patterns and techniques used. We are looking forward to a stunning array of quilts this year. It depends on you!

Entry forms are on the website and later in this newsletter.



MORE QUILT FIESTA NEWS

Small Quilt Auction 2022

Thanks to all who have donated quilts to the 2022 Small Quilt Auction! People certainly have been productive during these pandemic times—thank goodness for quilting!

Proceeds from the 2022 Small Quilt Auction will go to EMERGE! to support the services they provide for victims of domestic abuse. Instances of domestic abuse have increased during the pandemic so the donation of our auction proceeds is greatly needed and appreciated! EMERGE provides an emergency hotline, emergency shelter as well as lay legal services, education and counseling for victims and their families. Please visit emergecenter.org to learn more about the variety of critical services that EMERGE! provides.

The SQA is a silent auction which will run all 2 days of the quilt Fiesta. Small quilts may be any shape—wall hangings or table runners—so long as the piece perimeter measures no more than 100 inches. Wall hangings should include a 2 inch hanging sleeve.

An SQA entry form is available on the TQG website. Over the past year we have accepted small quilts at the Drive-by meetings at St. Francis Cabrini Church.

Please help support EMERGE! by making a donation to the 2022 Small Quilt Auction!

Basket Bonanza!

We are well on our way planning items for the show in January of 2022. We have the baskets...we just need your help filling them. Kate will be at the September in-person Guild meetings at the St. Francis Cabrini Church to receive your items. Remember they don't all have to be quilt related... we hope to construct baskets that can appeal to non-quilters aka husbands (golf, fishing, coffee, tea, etc.) too!!! Use your coupons to JoAnn's or Michael's or Hobby Lobby to purchase items so we can make this a Huge Bonanza of Baskets.

By Kate Verbecke, basket chair



President Blocks for Karen Fisher

Karen Fisher has served as our President and we need to show our appreciation. In previous newsletters you were asked to make blocks for her. As of July 1, 2021, I have only 8 blocks. There are about 300 members of the guild so let's get more blocks for her. Here's the information you need.

Your block will contain the letter 'K' and will have a maximum distance around the block of 36". Examples:

6" x 6" finished block = 24" around

9" x 9" finished block = 36" around

6" x 10" finished block = 32" around

You may embellish the block with embroidery, rick-rack, lace, etc. Remember that she loves buttons but don't sew them on because they may interfere with the quilting. If you want to include buttons, put your block in a zip lock bag and include the buttons in the bag. Karen loves bright colors so use a bright color for the background and a second bright that contrasts with your background piece for your 'K'. Get creative!! They can be turned in at the next meeting or mailed to:

Tucson Quilters Guild
President Block
PO Box 14454
Tucson, AZ 85732

Small Quilt Entry Form

(For Completed Donations, also available on the website)

Quilter's name(s):

Address:

Phone # _____ Email: _____

Quilt Title:

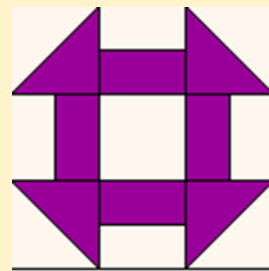
Quilt width: _____ Quilt length:

Artist's statement about this quilt: (50 words or less)

FOR OFFICE USE ONLY:

QUILT NUMBER _____

Quilt Fiesta 2022 President Challenge



Rules:

1. The theme is Churn Dash.
2. You may use any colors.
3. The quilt should measure no more than 100 inches around the perimeter. Any rectangular shape of that dimension is acceptable. If your quilt is not rectangular, make sure that it will fit in a rectangle that is no more than 100 inches around the perimeter.
4. The quilt must have a hanging sleeve and a label containing the quilt maker's name and title of the quilt. Quilts must also be contained in a cloth bag (pillowcase) to protect them from dirt or damage.
5. Your application is due by the October meetings and your quilts must be turned in at the November meeting.

Entrant's Name _____ Guild Membership # _____

Entry Title _____

Top by _____

Address _____

City, State, ZIP _____

Quilted by _____

Phone # _____ Email Address _____

Description: Use this space to provide details about your quilt. Please include information about the materials and/or techniques used or what your quilt represents to you. Please do not use more than 40 words in your description.

Your quilt will be displayed at the November meetings for a first round of voting and at the December meetings for final voting. Winners will be displayed at Quilt Fiesta 2022.

**2022 Tucson Quilt Fiesta!
Entry Information**

Requirements: You must be an active TQG member as of October 1, 2021 to enter any quilts in the show. All entries must have been made by, worked on by, or be owned by, the member. **Entries may not have been displayed at a previous TQG show!**

Entries: Each member may submit up to 3 entries and have up to 2 of them judged. (This is relatively NEW – We will not be extending judging into a third day, so we will only be able to accept around 175 quilts for judging!) Be sure to mark the priority number for each quilt on your entry forms. Second and third priority entries will be accepted on a space-available basis. **EVEN IF YOU ONLY SUBMIT ONE ENTRY, PLEASE MARK IT AS PRIORITY #1!**

Entry Forms: Each quilt must have a separate and complete entry form. Be sure to fill out the ENTIRE form – it is ALL necessary information! Please DO NOT print 2-sided, since each page goes to a different part of the quilt show committee. Entry forms may be mailed in advance, and **MUST** be postmarked no later than Friday, October 8, 2021. In-person submission will be accepted at a Guild Drive-By starting in August.

Entry Fees have changed!!!: Each member shall pay a **\$2 non-refundable fee** to submit up to 3 quilts – which covers postage if we have to mail your claim check/ID tags. For the first quilt the member wants judged there will be an additional **\$5 Fee** (\$7 total). For the second judged quilt, the fee will be **\$10 additional fee** (\$17 total). Checks should be made out to **“Tucson Quilters Guild.”** **Entry forms and fees should be mailed to:**

Kathie Miller

2530 N. Summit Dr.
Tucson, AZ 85745

Categories, Definitions and Descriptions: PLEASE CAREFULLY READ ALL THE INFORMATION ON THE ATTACHED PAGE! This information can change from year to year and it is important that you read and understand it before submitting your forms! Read through the category descriptions and select the most appropriate one. The committee reserves the right to break categories down further based on number and/or nature of entries. If you have any questions, please feel free to contact:

Kathie Miller (kmmiller@hotmail.com, 520-743-7025) or Karen Kelter (azgal39@yahoo.com, 520-319-0326)

Awards for Judged Quilts: The judges will have 1st, 2nd, 3rd, and Honorable Mention ribbons available for each judged category. They may or may not award all available ribbons. They will also have special award ribbons (Best in Show, Best Use of Color, etc.) and will award these ribbons at their discretion.

Viewers' Choice Awards: In addition to the judges' awards, the viewing public will have the opportunity to choose their favorites from among ALL the entered quilts. The Viewers' Choice committee will tabulate the results and present awards for 1st, 2nd, 3rd, and Honorable Mentions.

Quilt Delivery and Pick-up: All quilts will be turned in at the January 2022 General Meetings (Jan 11-12) and will be picked up at the Pima County Fairgrounds Old Pueblo Hall on Saturday, January 29, 2022 between 6:00-7:00 PM after takedown is completed.

Miscellaneous: Further details about hanging sleeves, pillowcases, labeling etc. will be in the letter you receive after all the entries have been received and reviewed. However, please note that no bag larger than a king size pillowcase (20x36") will be accepted. Quilts that cannot be folded must be submitted on a pool noodle cut to the appropriate length, and placed in an appropriate sized bag. Prior approval must be obtained from a member of the Judging Committee. **Quilts that cannot be folded or rolled CANNOT be accepted!!**

Special Distinction – QUARANTINE QUILTS

The Guild's show committee has created a way to recognize the positive aspects of what our quilters have been able to do during this past year of the COVID Pandemic and isolation. If you would like to have your quilt(s) carry this distinction on it's ID Tag, you will need to mark "Yes" on your entry form. We hope that your comments for the ID Tag will reflect why you wish your quilt to hold this distinction. THIS DOES NOT CHANGE THE CATEGORY INTO WHICH YOUR QUILT IS ENTERED.

2022 Quilt Fiesta!

Categories, Definitions and Descriptions

For the purposes of this show, a quilt consists of three layers (a top, batting, and a backing). Tied quilts (and unquilted items such as a Cathedral Window or Yo-Yo) will be accepted only in the "Other category. Quilts with false backs may be entered but will NOT be accepted for judging. Block-of-the-Month and quilts made from kits WILL be accepted, and if judged, should be entered in the appropriate category. **Please read all of this information carefully, as categories and descriptions might have changed!**

CATEGORY 2000 – NON-JUDGED – ALL ITEMS NOT BEING JUDGED ARE PLACED IN THIS CATEGORY REGARDLESS OF TECHNIQUE USED!

100 – One Person, Primarily Pieced, Hand Quilted Quilts created by a single individual that are primarily pieced and hand quilted should be placed in this category. The piecing may be by hand or machine or both.

200 – One Person, Primarily Pieced, Machine Quilted Quilts created by a single individual that are primarily pieced and machinequilted should be placed in this category. The piecing may be by hand or machine or both.

300 – One Person, Primarily Appliqued, Hand Quilted Quilts created by a single individual that are primarily appliqued and handquilted should be placed in this category. The applique may be by hand or machine or both.

400 – One Person, Primarily Appliqued, Machine Quilted All quilts created by a single individual that are primarily appliqued and machine quilted should be placed in this category. The applique may be by hand or machine or both.

500 – Two Persons, Primarily Pieced, Hand or Machine Quilted All quilts that are primarily pieced and which were created by exactly two people – with any division of labor – should be placed in this category.

600 – Two Persons, Primarily Appliqued, Hand or Machine Quilted All quilts that are primarily appliqued and which were created by exactly two people – with any division of labor – should be placed in this category.

700 – Group (3 or more persons), Hand or Machine Quilted All quilts created by three or more people with any techniques and any division of labor, including round robins, bee quilts, etc., should be placed in this category.

800 – Miniature, Hand or Machine Quilted Any techniques may be used (piecing, applique, whole cloth, painting, etc.). A miniature is a small-scale replica of a full-sized quilt. All aspects of the quilt should be in proportion, including the applique, piecing, quilting, fabrics, borders, and finishing. The longest size may not exceed 24" and the individual blocks (if any) may not exceed 4".

900 – Modern Quilts in this category must include one or more of the following: updated and/or reinterpreted classic quilt designs, the bold use of color and/or prints, high contrast and graphic areas of solid color, improvisational piecing, minimalism, expansive negative space, asymmetry, non-traditional layouts, and alternate grid work.

1000 – Art – Pictorial/Whimsical This should be an original design representing a recognizable person, place or thing; including caricature, fairy tale and cartoon style. Any techniques (including works from photographs and digitally enhanced quilts) may be used. Quilts made from or adapted from publicly available patterns are NOT eligible in this category. Any techniques may be used.

1100 – Art – Abstract/Graphic This should be an original design which is abstract or graphic and not based on an existing quilt or another artist's interpretation of the same subject matter. Quilts made from or adapted from publicly available pattern are NOT eligible in this category. Any techniques may be used.

1200 – Other The primary design showcases a special technique other than piecing or applique. This may include but is not limited to: whole cloth with emphasis on the quilting, embroidery by hand or machine, cathedral windows, yoyos and crazy quilts. Quilts in this category may or may not include visible quilting stitches, depending on technique.

STAPLE HERE

STAPLE a 4"x6" photo of your quilt here with your Name, Guild Member Number, Title of Entry and an arrow indicating the "TOP" of the quilt on the back of your photo. **Please be sure your photo is of sufficient quality to be representative of the quilt!**

PAPER CLIP your entry fee(s) on your Priority #2 Entry Form. You may include cash or check (\$2, \$7, \$17 – see p.1). Make your check out to the **Tucson Quilters Guild**.

TURN-IN your entry forms at a Guild Drive-By or mail them. The deadline submission is October 1, 2021. The postmark deadline for mailed entries is **Friday, October 8th**. Submit mailed entries to:

Kathie Miller
2530 Summit Dr.
Tucson, AZ 85745

If you have **ANY** questions about this form or the categories, you can email or call:

Kathie Miller (kmmiller@hotmail.com, 520-743-7025) or Karen Kelter (azgal39@yahoo.com, 520-319-0326)

PLEASE CAREFULLY READ THE "CATEGORIES, DEFINITIONS AND DESCRIPTIONS" PAGE BEFORE FILLING OUT YOUR ENTRY FORMS!

REMEMBER – NON-JUDGED QUILTS WILL ALL BE CATEGORY 2000!

LATE ENTRIES AND INCOMPLETE OR INCORRECT ENTRY FORMS WILL NOT BE ACCEPTED!

PHOTO AND CASH/CHECK SHOULD NOT EXTEND BELOW THIS LINE

2022 Tucson Quilt Fiesta Entry Form

Member Name _____ Guild Member # _____

Street Address _____

City, State, Zip _____

Phone _____ Email address _____

Quilt Title _____ Priority # _____

Width in inches (horizontal) _____ Height in inches (vertical) _____

Top made by _____

Quilted by _____

Is the Quilter a professional? _____ YES _____ NO

Was quilt made from a KIT or BoM which included any fabric? _____ YES _____ NO

Judged? _____ YES _____ NO Category _____
Category 2000

Special Distinction Quarantine Quilt _____ YES _____ NO

Techniques used (mark all that apply)

_____ Hand Piecing _____ Hand Quilting _____ Hand Applique _____ Hand Embroidery

_____ Mach. Piecing _____ Mach. Quilting _____ Mach. Applique _____ Mach. Embroidery

_____ Beading _____ Painting _____ Other (describe) _____

NOTE: The Tucson Quilters Guild assumes NO responsibility for quilts displayed at the show. Submissions include permission for photography of your entry by visitors, media and Show Committee.

2022 Tucson Quilt Fiesta! Entry Form

The following information will appear on the ID Tag displayed with your quilt.

Entrant	Quilt
	Top Made
	Quilted
	Category

Pattern Source

(Name of book, pattern, class, etc., or "original design" (see definition of art/original categories found on the Categories, Definitions and Descriptions page).

Description of quilt

(Use the space above to provide details about your quilt. You might include information about the materials and/or techniques used, or describe your inspiration or the reason for making this quilt. Please do NOT use more than ~ 40 words in your description - space on the ID tag is limited!)

Is this quilt being judged? ☐ YES

☐ NO

Special Distinction Quarantine Quilt ☐ YES ☐ NO

MORE NEWS



QFAC is still selling quilts that are on display at The Tucson Botanical Gardens, through September 19th. We are very thankful for all of you that go look and then buy these lovely handmade creations.

Raffle tickets for our current opportunity quilt, "Forever and a Day", are still available on the website at <https://www.quiltforacause.org>. We will be meeting in person at the September meeting, so that will also give you a last chance to get your tickets. The drawing will be at the Wednesday meeting, September 8th.

New quilts are being added to our website every month and we encourage you to check them out.

Thank you to those of you who thought you were going to come to the drive-by in August. But we are thankful for the rain. Don't despair we will be at the September meetings to accept your donations. The form for donating something to Quilt for a Cause is on our website, but of course we will have them at our table.

We have some events coming in the near months and are anxious to see all of our friends. Watch for upcoming details on Facebook, Instagram and our website.

Thank you for reading about Quilt for a Cause and don't be afraid to ask any of us questions you may have about joining us to be on our board. There is no charge to join, and you could be part of this amazing group that provides support to so many.

Do you shop with Amazon and do you know about Amazon Smile? If you designate Quilt For a Cause as your charity, then every time you shop, a small percentage gets donated to us. It is an easy way to support Quilt For a Cause!

Quilt For a Cause is planning a one-day bus trip to the Modern Quilt Guild QuiltCon on February 18, 2022 in Phoenix. We are making plans now and we shall announce when you can sign up to travel to the show with us. We are arranging three pick-up and drop-off locations, Tucson Eastside, Northwest and SaddleBrooke, and since you are riding with us, no driving or parking hassles. We are planning games, prizes, and lots of fun on the way to a great quilt show. Check out the event online at: <https://www.quiltcon.com/>. Details will be coming soon, so watch for this exciting experience!

Connie German, Director



Our beautiful "Forever and a Day" quilt winner will be selected at the TQG meeting on September 8th.

DRESS A BEAR



New bears were ordered and received; we now have (70) 12 & 13-inch bears to be dressed. I am in the process of making outfits to verify our current patterns will work.

If you have been storing a dressed bear, I will be most pleased to find loving arms for them.

I am looking for a **co-Dress A Bear person who attends the evening meetings**. Duties are easy... distribute undressed bears; keep record of adoptions; share patterns and then collect the beautifully dressed bears. We will work together on distribution of dressed bears.

Joyce Bott, Dress a Bear Chair



TUCSON QUILTERS GUILD BEES

Eastside

1492 BEE

Lisa Fryxell – (575) 590-5472
Columbus Library
4350 E 22nd Street
1st Monday, 10 AM to 2 PM

EAGLE WINGS QOV BEE

Char Gasker
Quality Quilterz
8421 E Broadway Blvd
4th Thursday of the month

EASTSIDE QUIET BEE

Vicki Moore
748-7219, 241-7290
Ask Vicki for location
1st Thursday, 6:30 PM

HIMMEL QUILTERS

Ruth Campbell – (520) 792-1639
Himmel Park Library
1035 N Treat Ave
3rd Wednesday, 6 – 8 PM

NORTHEAST 9 PATCHERS

Janice Jones
Members Homes
1st Friday, 9:30 AM

PACIFIC RIM QUILTING BEE:

Susan Owara – 520-572-9231
The Quilt Basket
6538 E. Tanque Verde #130
1st Tuesday, 10 am

Eastside, can't.

TUCSON ART QUILTERS:

No contact person at this time
Eastside City Hall
7575 E. Speedway,
3rd Wednesday, 10 am – Noon

UFO BEE

Mary Meserve
The Quilters Market
7601 E Speedway Blvd
Every Tuesday, 9 – 11:30 am

Northwest

MATERIAL GIRLS

Cindi Huff – (623) 225-6109
members homes
1st & 3rd Thursdays, 1 – 4 pm

MONA LISA BEE:

Debbie Sileven (520) 954-9265
Foothills Community Church
3301 W Overton Rd
3rd Monday, 9:30 – 11 am

PIECE PATCHERS:

Evelyn George
Members homes

NORTHWEST NEEDLERS:

Evelyn George –
Members homes

Southwest

MONDAY NIGHT QUILTERS:

Marie Morris
403-6208, 623-0123
Grace Pointe Church
2555 W Valencia Rd.
3rd Monday, 6:30 – 8 pm
Sept – Nov and Jan – March

Green Valley

NORTH OF THE BORDER:

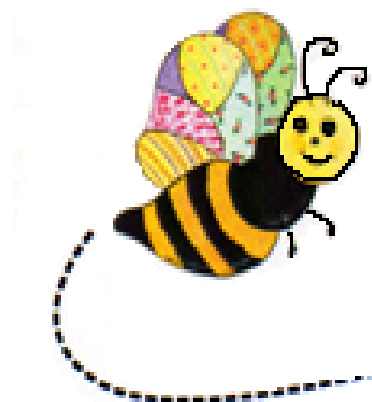
Patty Goodsell – 989-1754
Ask Patty for location info
Every Thursday - 9:30 AM – Noon

Bee Keeper

For more information about any of the Bees listed or how to start you own bee, please contact our personal beekeeper.

Elizabeth Sonnenfeld,

beekeeper@tucsonquiltersguild.com



TUCSON QUILTERS GUILD BASICS

The mission of the Tucson Quilters Guild is to perpetuate the art of quilting, encourage the practice of quilting, and to stimulate interest in this art form.

Who:	All Members
What:	Business Meeting —First Wednesday of every month in the Church Classroom. General Meetings - Second Wednesday of the month in the morning or the Tuesday evening preceding the second Wednesday - in the Parish Hall.
When:	Business Meeting – 9:30 AM ~ 10:30 AM General Meetings: Tuesday Evening –7:00~9:30 PM Wednesday Morning –9:30 AM~12:00 PM
Where:	St Frances Cabrini Church 3201 E. Presidio Near Fort Lowell and Country Club
(How): Parking	Guild members are asked to refrain from parking in the spaces in front of the Parish office; the Church wants these spaces to remain open for Church members who have business to attend to in the office. This is the small building to the east of our meeting room. PARKING NOTICE: Tuesday evening attendees: The Church's Family Classes are in session again, so PLEASE DO NOT PARK IN THE FRONT LOT. Use the side or back lot.
Why:	Come to get involved with all aspects of the Guild, to make new friends, learn new quilting skills, share, but most of all, to have FUN .
Cost:	Members – \$30/year (due in March) Guests – \$5/meeting

TQG MEETINGS ARE FRAGRANCE FREE

Please remember to be kind to fellow members with allergies to scents and perfumes. Please attend the meetings fragrance / perfume free. It means another member can attend.

USE OF CAMERAS AT GUILD MEETINGS

Due to copyright concerns, photos may be taken before the meetings, during the breaks, and after the meetings.

No photography or videos are permitted during the guest speaker presentations.

Submission deadline for the next newsletter is the Tuesday following the Wednesday General Meeting. For the October Newsletter, deadline is **Tuesday, September 14**. Please send your articles/ads to the Newsletter Editor at newsletter@tucsonquiltersguild.com.

SHH-HH PHONE APP FOR TQG MEETINGS

<http://shushapp.com> The shush app allows you turn the volume of your ringer off for whatever amount of time you want. At the end of that time your phone's ringer will be turned on again. It is handy for those of us who forget to turn on the ringer again.

TQG BOARD AND COMMITTEES

President	Marie Morris	president@tucsonquiltersguild.com
Vice President	Cathy Blackburn	vp@tucsonquiltersguild.com
Recording Secretary	Francie McMillan	secretary@tucsonquiltersguild.com
Treasurer	Joyce Province	treasurer@tucsonquiltersguild.com
Endowment/ Donations	<i>OPEN</i>	endowment@tucsonquiltersguild.com
Membership	Joyce Holley	membership@tucsonquiltersguild.com
Member at Large, Evening	Laurel Clarke	memberatlarge-pm@tucsonquiltersguild.com
Member at Large, Morning	Joline Albaugh	memberatlarge-am@tucsonquiltersguild.com
Programs Director	Kathryn Barton	programs@tucsonquiltersguild.com
Programs Co-Director	Connie German	programs-co@tucsonquiltersguild.com
2021 Quilt Show Director	Pamela Golliet	quiltfiesta@tucsonquiltersguild.com
2021 Quilt Show Co-Director	<i>OPEN</i>	

Dress a Bear	Joyce Bott	
Bee Keeper	Elizabeth Sonnenfeld	
Education	<i>OPEN</i>	
Finance	Keith Dommer	
Finance	Mimi Pollow	
Guild Publicity	<i>OPEN</i>	
Historian	Joyce Harrison	historian@tucsonquiltersguild.com
Hospitality		
Library	Janet Chumbley	library@tucsonquiltersguild.com
Newsletter	Francie McMillan	newsletter@tucsonquiltersguild.com
Pattern of the Month	Karen Fisher	
Quilt-a-Thon	Linda Begega	quilt-a-thon@tucsonquiltersguild.com
Quilting for Others	Kate Verbecke & Kathy Miller	quilting4others@tucsonquiltersguild.com
Opportunity Quilt 2021	Lisa Fryxell	
Record Keeper		
Website	Kathy Barton	website@tucsonquiltersguild.com

ADVERTISEMENTS

The Rains Came & the Desert Bloomed

A Celebration of the Rains Quilt Retreat at El Rancho Robles Guest Ranch in Oracle AZ

October 25-28, 2021

Starting Noon on the 25th through 4:00pm on the 28th

3 projects to choose from or do your own thing

Registration Information at FB Noah & Her Sisters Quilt Co (Limited retreat size 18)

Instructor and Host Joyce Holley Certified Studio 180 Quilt Instructor & TQG Member

Contact Joyce Holley at: 1 (816) 223-4454

Desert Bloom



Birds on a Wire



Majesty Lemoyne



PLACE YOUR AD IN OUR NEWSLETTER

Do you have a sewing machine or other quilting accessories you would like to sell?

Members: \$5/ad, for quilting ad/sewing related items.

Do you have a quilting service you provide?

Quilt related business/service:

Business Card- 3.5" x 2" (Horizontal or Vertical) **\$10/issue**

1/4 Page Ad-4.25" w x 5.5" h **\$15/issue**

1/2 Page Ad-8.5" w x 5.5" h (horizontal) 1/2 Page Ad 4.25" w x 11" h (vertical) **\$30/issue**

Full-Page Ad 8.5" x 11" **\$60/issue**

Non-members should add \$5 per category.

For additional information and/or to reserve space in the next newsletter, please contact the newsletter editor at: newsletter@tucsonquiltersguild.com

Checks are to be sent to the attention of the TQG Treasurer at P.O. Box 14454, Tucson, AZ 85732

September Block of the Month

“Honoring All Our Ancestors”

Karen G. Fisher

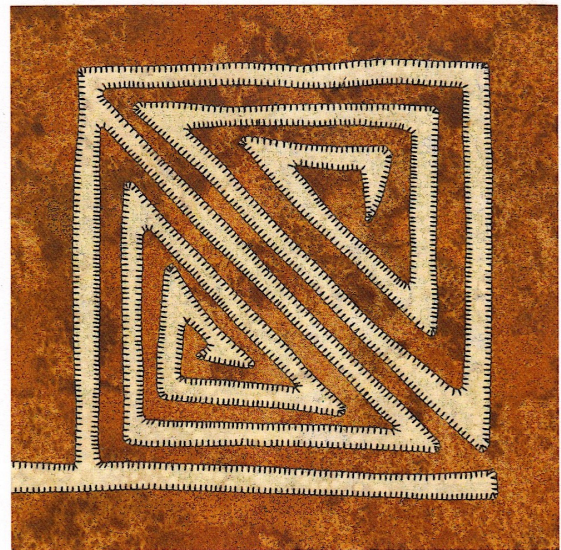
Several years ago, in a ceramics class, I was adding border designs to some pieces. Another student saw what I was doing and told me the designs were Navajo, and I shouldn't be appropriating them for my own use. When I showed her my carefully resourced Greek border designs, she was very surprised, and we were both intrigued by how similar they were, almost identical.

I have since discovered that these kinds of “key” and “fret” designs show up in many cultures on essentially every continent. I am fascinated by art history, and cultural anthropology, and all these patterns make me wonder if they were a way our ancient ancestors worldwide were trying to codify a sense of order within the seeming chaos of nature around them. The beginnings of these patterns could have been created with the simplest of tools as they were incised into weapons, drawn on stone, and later woven into textiles and carved in wood.

My source for this pattern is the Watchtower at the Grand Canyon, built by Mary Colter in the 1930s. Her source was a larger “fret” design in the Canyon de Chelly, one of the many ancient Indigenous ruins she visited to source the final design of her famous structure. She visited many ruins in the Four Corners area, then designed her watchtower to honor them, while copying none of them.

I chose to use “rock” fabrics for backgrounds, and batiks for the foreground figure. I purposely chose to run one end of the design off the edge—those ends can come together to create a secondary pattern when arranging the blocks in groups of four.

I also think this pattern could be very “modern” by doing it in two high contrast colors or values, such as black and white.



My favorite applique method:

Cut fusible interfacing the size of applique shape. Do not use a product that fuses the two pieces of fabric to each other—you are making your applique fabric more stable. If you are using a variety of fabrics, cut the number of pieces of interfacing you need for the blocks you are making.

Fuse interfacing to the wrong side of your applique shape fabric. **MAKE SURE** the whole surface is securely fused so that it does not peel apart as you cut it apart.

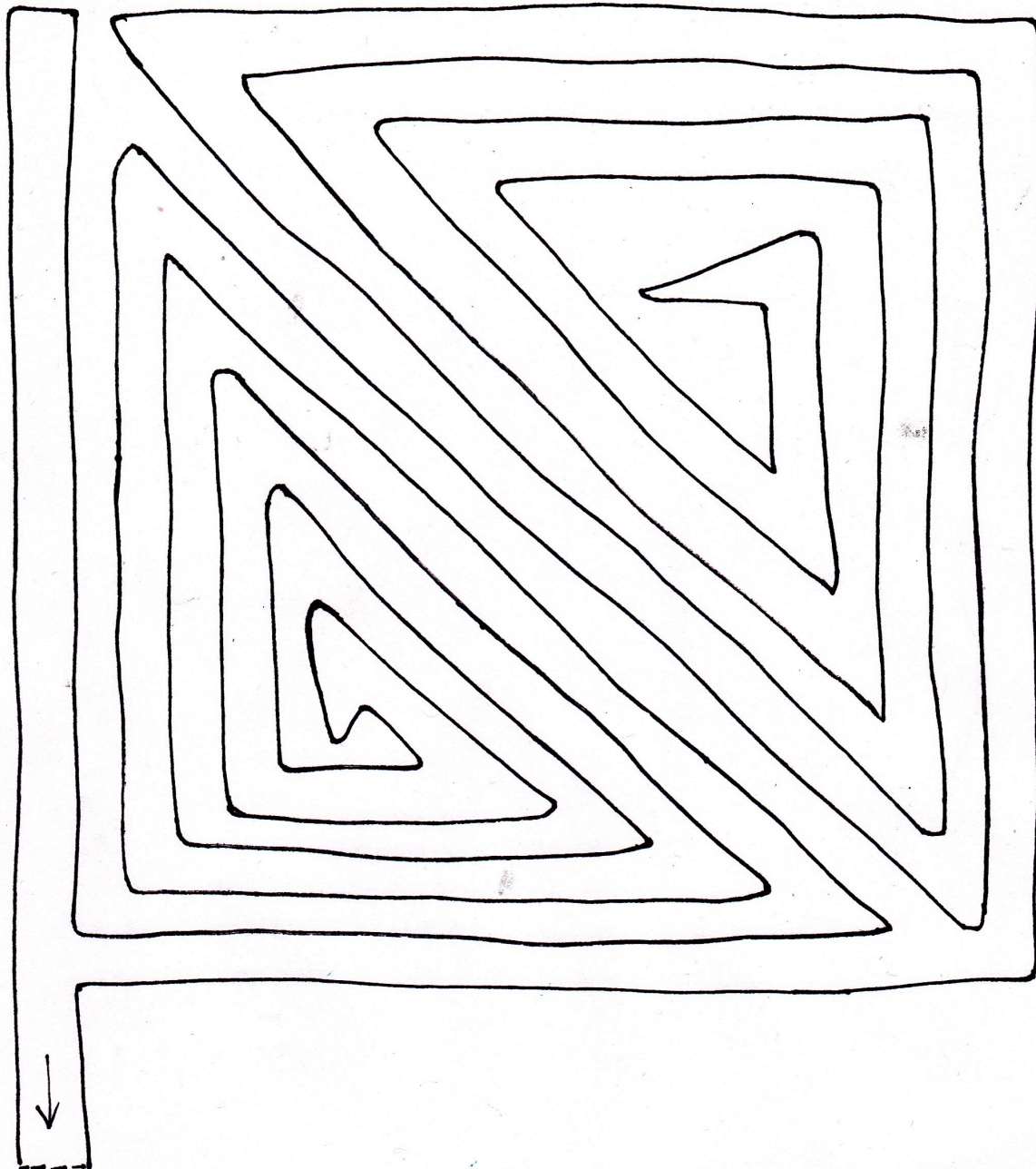
As you cut out the “key” shape, you will end up with two useable pieces if you make one long cut from outer edge to center. These interior shapes can be used for another project.

Stitch down. A small zigzag or blanket stitch gives a sturdy finish and adds a bit of detail.



Full size applique pattern for 8" block. Cut background piece of fabric 9 1/2" square. Center applique shape and stitch, with long end running off edge of fabric. Trim block to 8 1/2" square.

If you want a more "modern" look, you can re-draw the shape with straight edges. Reduce or enlarge for other block sizes.



A secondary “spinning” effect can be achieved where four blocks come together.

