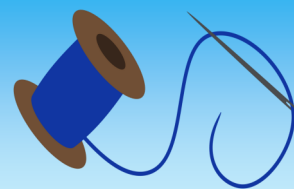




Tucson
Quilters
GUILD

THREADTALES



Volume 25, Issue 9

September 2020

PRESIDENT'S MESSAGE

Dear Quilters,

In the tough times we are living through right now, with all that is truly unprecedented going on, it can be hard to keep our mental and emotional equilibrium. It can be even harder to find moments that bring us joy or appreciation of the people around us. I have had TWO lovely things come my way in just this past week, and they are way too good to keep to myself. And one of them is all about our guild.

A few days ago, I sent a letter to the TQG board members because there was a growing problem that needed solving. It was neither about personal or personnel issues—it was mostly about logistics, and figuring out how to keep several things running smoothly, and fixing a few others. I tried very hard to be truthful without scaring anybody away, and the responses and solutions that were put in place were wonderful. My board, YOUR TUCSON QUILTERS GUILD BOARD, stepped up so quickly to take on more work and organization, that I was even kind of emotional at the level of response. It was one more indication of how much all of us love and support this organization we have chosen to be a part of.

The second thing was more personal, and off-the-charts cute. When my daughters were little, I bought them some beautiful wooden toys, probably at a craft fair. When they grew up, their beautiful, sculptural toys went with them. We went to my daughter's house for my 8-year-old granddaughter's birthday party, and guests included a really nice neighboring family they have only gotten to know because of Covid. All the kids get to play together, instead of being isolated with just parents. The littlest boy, not quite three, was playing with some of the wooden toys. He was so focused, and playing so nicely with them, that I found myself smiling, just watching him. It was just so fun to see the toys become toys again in his little hands.

So make sure you find joy in what you are doing, hopefully something every single day. We all need that feeling to help us keep our emotional heads above water, so that we can keep moving toward the next massive group hug I'm saving up for.

Yours in Quilting,

Karen G. Fisher, President



SEPTEMBER CALENDAR

Business Meeting:

September 2, 9:30 am

General Meetings:

Tues, Sept. 8, 6:30-7:30 pm

Wed, Sept. 9, 9:30 -10:30 am

(these are drive-by meetings)

September Workshop:

Thursday, September 10. This one-day ZOOM workshop begins at 9 am.

OCTOBER CALENDAR

Business Meeting:

October 7, 9:30 am

General Meetings:

Tues, October 13, 6:30-7:30 pm

Wed, October 14, 9:30 -10:30 am

(these are drive-by meetings)

Please note that these are events are subject to change due to the current COVID-19 pandemic.

Inside this Issue

TQG Programs	2
Guild News	4-5
President's Challenge	6
TQG Bees	7
TQG Meeting Info/Basics	8
TQG Board Members	9
Pattern of the Month	10
Quilt Fiesta Entry Form	11-14

TQG PROGRAM INFORMATION

All About Zoom

(from Programs Chair Kathryn Barton)

Originally targeted at tech companies, Zoom's founder went to market with a "freemium" strategy, offering a free basic service for some with added premium services and subscriptions targeted at businesses. The strategy worked and within a few short years, Zoom found itself the video conferencing market leader.

But a funny thing happened on the way to dominating the B2B (Business to Business) market: a global pandemic turned Zoom into a household name. With the world shutting down in a matter of weeks, every institution, every school, every college, every family now found themselves in desperate need of a way to communicate.

Zoom is a proud American company. Traded publicly on the Nasdaq exchange, it is headquartered in San Jose, CA. As the CEO and Founder of Zoom says "In ten to twenty years, when people write the history of Covid-19, I want them to write that Zoom did the right thing for the world."

And over a mindboggling period of coronavirus-fueled growth, Zoom unexpectedly joined Google, Kleenex and Band-Aid in the hallowed pantheon of everyday names. *Are you quilters ready to Zoom?*

What You Need to Do...

If you haven't already done so, download Zoom onto any of your devices.

A day or two before the meeting we will EMAIL you with a link to join the "Webinar". On the day of the meeting, use this link to access the event. Due to the size of our Guild, it is impractical to show all of our lovely faces, not to mention the thought of all of us trying to talk at once. So, when you enter the meeting, you will see only a handful of Board and Committee members and then we will turn our screens over to our speaker.

Want to ask a question? There is a Chat feature on your screens. Use it to type your questions and they will all be answered at the end of the presentation.

Those registered for the workshop will be sent a separate link in another EMAIL. Workshops will be conducted in the familiar Zoom format.

TQG PROGRAM INFORMATION

October Speaker and Workshop

Karen Combs



Karen is an internationally known quilter, teacher, author and designer who has been nominated 3 times by students for *Quilt Teacher of the Year*. Teaching since 1989, Karen is fascinated with optical illusions and quilts; this is the subject of many of her workshops. She is the author scores of magazine articles, quilt patterns and has written 9 quilting books, among them, *Optical Illusions for Quilters*, *Combing Through Your Scraps* and *Celtic Patchwork Illusions*. She has designed over 100 fabric collections, both quilting cotton and batiks and is known for her innovative designs. She currently designs for Banyan Batiks, a division of Northcott. Karen has appeared on many quilting TV programs and has a Craftsy class, New Directions in Tumbling Blocks. Karen lives in the rolling hills of middle Tennessee with her husband, Rick and cute Shih Tzu named Benji.

Lecture

QUILTS OF ILLUSIONS

Explore the world of optical illusions with Karen as she shows you some of the wonderful quilts that she has created and shares tricks and tips how to make them. This virtual lecture is a beautiful and inspiring trunk show. There will be time for questions after the lecture.

Workshop

JEWEL BOX

A beautiful quilt with the illusion of depth. Don't let it scare you, the piecing is easy, created from just triangles! Believe it or not, this stunning quilt is created with just one block, done in different colors. Created using a light, medium and dark value of four cool colors. Perfect pattern for batiks, gradated fabrics or hand dyed fabrics! The quilt is 48" x 48".

(As a special COVID-19 gift for her participating in her first ZOOM workshop, Karen is offering her pattern FREE to all workshop attendees).

Don't have a good supply of fabric left after making all those other COVID quilts? Karen has several fabric lines that would be perfect for this project. See her webpage www.KarenCombs.com and go to the Online Store / Fabrics.

For the full supply list including the required yardage go to <https://www.karencombs.com/class-detail.php?ID=22>



GUILD NEWS

Money Talks!

To introduce myself to you, I am Joyce Province, a new guild member as of February 2019. I quit working as an accountant in May 2019, and was hoping to become more active in the guild. While I anticipated that the Finance Committee would fit me best, here I am as Treasurer. Surprise!

I began sewing clothing on my mother's Singer Featherweight at age 8 or 9 in 4-H, but didn't catch the quilting bug until many years later - after my sisters did. They initially drug me along to quilt stores, but now I go much too willingly! I still love the unique sound that a Featherweight makes.

The guild's biggest (and best!) expense are our wonderful programs. With nasty COVID ruining our plans, we ended the fiscal year (June 2020) with many fewer expenses. Despite an expected net ordinary loss approaching \$20,000.00, we ended the year with a net ordinary INCOME of \$11, 050.31. The financial statements should be up to date on the website as of the delivery of this newsletter.

We have begun the new fiscal year, and already realize that the



2020-21 budget requires additional adjustments. Specifically, the Board has voted to increase the Office Supply budget by \$499.00 to accommodate Zoom charges and the like. Also, there is a \$60 increase to the Quilt-a-thon budget to accommodate increased batting costs. Should you have any questions about guild finances, please feel free to contact me at:

treasurer@tucsonquiltersguild.com.

Quilt Fiesta Update

We have been working as hard as we can to prepare for our Quilt Fiesta 2021. Due to the pandemic crisis, we still do not know for sure if we can even have a Fiesta yet. We have decided to make a firm commitment in October one way or the other. In the meantime, we are preparing everything we can to be ready to go as soon as the decision is made. What we need from our members is quilts! Please prepare your show quilts as usual. The entry form should be available on the website and we will include it here in the newsletter. Either way, we plan to showcase the talent we have in our guild. More details will be shared very soon. You will find the Quilt Fiesta Entry Form on the next few pages.
Pamela Golliet
2021 Quilt Fiesta Director

Quilt-a-Thon Report

Quilt-A-Thon 2020 News

Thanks to all those who were able to Fly-By the Quilt-A-Thon table this August. We received 27 quilt tops and 25 completed quilts. We also handed out 13 quilt sandwiches that some of our members are going to complete at home. The 30 quilts pictured have all had labels attached and will be delivered to Gospel Rescue Mission this month. Gospel Rescue Mission serves a diverse population and they were interested in receiving quilts both for adults and for children. This unique quilt has found a home as a wall hanging at Sr. Jose Women's Center where it will be enjoyed by the staff and guests for many years to come. We have many more quilt sandwiches available and can also provide quilts that have been enveloped and just need to be tied or quilted. We will have another Fly-By in September but if you would like to get some Quilt-A-Thon quilts to complete before then please contact me at quilt-a-thon@tucsonquiltersguild.com



GUILD NEWS

Small Quilt Auction 2021

Quilters! Hope you all are staying safe and healthy and getting plenty of quilting done!

Do you need a break from making masks and other PPE or do you have fabric scraps left over from these projects? Consider making a small patchwork or scrappy quilt for the auction to use up those pieces. No ideas? Check out the guild newsletters for Block of the Month patterns. These designs also provide good practice for piecing and quilting.

Entries for the SQA need not be complicated: requirements are a perimeter of 100 inches or less, a two inch hanging sleeve and a completed entry form (below). Quilts can take a variety of forms- wall hangings, table runners, doll quilts or any form fitting the size requirements. Quilters have submitted original designs, quilt group challenge pieces, pieces made from leftover blocks, blocks of the month, unfinished projects, and practice studies for larger quilts. We have been collecting donations for the Small Quilt Auction at the monthly drive-by events held during the regular guild meeting times at the St. Francis Cabrini Church. Please check the Guild Facebook page to confirm a Sept drive-by! Given the numbers of people facing hardship due to this pandemic, we will donate proceeds from the SQA to the Community Food Bank.

Donated small quilts will be available for purchase through

a silent auction at the 2021 Quilt Fiesta. Each quilt will have a beginning bid amount as well as a "buy it now" price. Quilts will be priced reasonably so they will sell during the two day show. Winners of the auction will be contacted if not present at the close of the auction; but, quilts purchased at the "buy it now" price can go home with you! If you have questions, please contact Wendy Anderson:

aksk8wmn@gmail.com.



Quilt For a Cause is proud to announce that we currently have a display of quilts for sale at the Tucson International Airport! Please have a look if you are there. They are in the display cases in baggage claim. Quilt for a Cause will also be hanging quilts in October at Roche Tissue Diagnostics (Ventana Medical) in Oro Valley as part of their winter art exhibit. Dates will be posted in next month's newsletter.

QFaC has been at the two TQG Fly-By meetings at St. Francis Cabrini, and will be there throughout the fall. If you have a quilt you would like to donate, please come by our table. If you've found a quilt that you'd like to buy from our website, we will be happy to have it ready for you at the Fly-By. We will also have some patterns if you need a new project!

We now have an Instagram account, so please follow us!

If you happen to be purchasing anything from Amazon.com, we participate in the Amazon Smile program. Please select Quilt For a Cause as your charity, and we will receive a small portion of the sale from Amazon at no cost to you!

Our current raffle quilt is Summer in Sicily. The quilt is an expert study of color and value done in 2" squares, made by Cate Johnson, and quilted by Julie House. As always, better in person, but only online for now. The size is 65 x 85 inches. Summer in Sicily opportunity tickets can be purchased on our website, <https://www.quiltforacause.org/>, with the drawing planned for December. Tickets are one for \$2.00 or three for \$5.00.

Our patterns, as well as the quilts for sale, and raffle quilt, are all available on the new website, <https://www.quiltforacause.org/>. If you'd like to make a quilt to donate to Quilt For a Cause, our current need is for quilts with a Southwest, or University of Arizona, theme, as well as for table runners or toppers. We also need baby quilts. As always, we are pleased to receive your quilt gifts with any theme to continue our Cause of fighting breast and gynecologic cancers. Please contact us on the website, and we will make arrangements to get the quilts from you. The quilt donation form is available on our website. Thank you so much!

TUCSON QUILTERS GUILD BEES

Eastside

1492 BEE

Lisa Fryxell – (575) 590-5472
Columbus Library
4350 E 22nd Street
1st Monday, 10 AM to 2 PM

EAGLE WINGS QOV BEE

Char Gasker
Quality Quilterz
8421 E Broadway Blvd
4th Thursday of the month

EASTSIDE QUIET BEE

Vicki Moore
748-7219, 241-7290
Ask Vicki for location
1st Thursday, 6:30 PM

HIMMEL QUILTERS

Ruth Campbell – (520) 792-1639
Himmel Park Library
1035 N Treat Ave
3rd Wednesday, 6 – 8 PM

NORTHEAST 9 PATCHERS

Janice Jones
Members Homes
1st Friday, 9:30 AM

PACIFIC RIM QUILTING BEE:

Susan Owara – 520-572-9231
The Quilt Basket
6538 E. Tanque Verde #130
1st Tuesday, 10 am

Eastside, con't.

TUCSON ART QUILTERS:

No contact person at this time
Eastside City Hall
7575 E. Speedway,
3rd Wednesday, 10 am – Noon

UFO BEE

Mary Meserve
The Quilters Market
7601 E Speedway Blvd
Every Tuesday, 9 – 11:30 am

Northwest

MATERIAL GIRLS

Cindi Huff – (623) 225-6109
members homes
1st & 3rd Thursdays, 1 – 4 pm

MONA LISA BEE:

Debbie Sileven (520) 954-9265
Foothills Community Church
3301 W Overton Rd
3rd Monday, 9:30 – 11 am

PIECE PATCHERS:

Evelyn George
Members homes

NORTHWEST NEEDLERS:

Evelyn George –
Members homes

Southwest

MONDAY NIGHT QUILTERS:

Marie Morris
403-6208, 623-0123
Grace Pointe Church
2555 W Valencia Rd.
3rd Monday, 6:30 – 8 pm
Sept – Nov and Jan – March

Green Valley

NORTH OF THE BORDER:

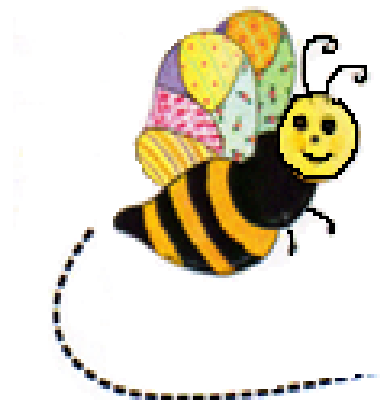
Patty Goodsell – 989-1754
Ask Patty for location info
Every Thursday - 9:30 AM – Noon

Bee Keeper

For more information about any of the Bees listed or how to start you own bee, please contact our personal beekeeper.

Elizabeth Sonnenfeld,

beekeeper@tucsonquiltersguild.com



CLASSIC FAMILY MOVIES

Disney's Snow White and the Seven Dwarves and/or The Wizard of Oz

Using any techniques (and embellishments!) you choose, make a small quilt that is inspired by either of these movies, or even combine pieces of them together.

I can visualize Dorothy and Snow White being scared together in the dark forest, a battle between the two evil witches (with light sabers—oops wrong decade and theme!), or perhaps a sports competition between the dwarves and the munchkins.

Maximum size is a 100" perimeter, and it needs a hanging sleeve when it is finished. **Quilts must be turned in at the November meeting.**

Your quilt will be displayed at the December meetings for a first round of voting and at the January meetings for final voting. Winners will be displayed at our Quilt Fiesta 2020.



Have Fun! And surprise me with your creativity!

TUCSON QUILTERS GUILD BASICS

The mission of the Tucson Quilters Guild is to perpetuate the art of quilting, encourage the practice of quilting, and to stimulate interest in this art form.

Who:	All Members
What:	Business Meeting —First Wednesday of every month in the Church Classroom. General Meetings - Second Wednesday of the month in the morning or the Tuesday evening preceding the second Wednesday - in the Parish Hall.
When:	Business Meeting – 9:30 AM ~ 10:30 AM General Meetings: Tuesday Evening –7:00~9:30 PM Wednesday Morning –9:30 AM~12:00 PM
Where:	St Frances Cabrini Church 3201 E. Presidio Near Fort Lowell and Country Club
(How): Parking	Guild members are asked to refrain from parking in the spaces in front of the Parish office; the Church wants these spaces to remain open for Church members who have business to attend to in the office. This is the small building to the east of our meeting room. PARKING NOTICE: Tuesday evening attendees: The Church's Family Classes are in session again, so PLEASE DO NOT PARK IN THE FRONT LOT. Use the side or back lot.
Why:	Come to get involved with all aspects of the Guild, to make new friends, learn new quilting skills, share, but most of all, to have FUN .
Cost:	Members – \$30/year (due in March) Guests – \$5/meeting

TQG MEETINGS ARE FRAGRANCE FREE

Please remember to be kind to fellow members with allergies to scents and perfumes. Please attend the meetings fragrance / perfume free. It means another member can attend.

USE OF CAMERAS AT GUILD MEETINGS

Due to copyright concerns, photos may be taken before the meetings, during the breaks, and after the meetings.

No photography or videos are permitted during the guest speaker presentations.

NEWSLETTER DEADLINE:

Submission deadline for the next newsletter is the Tuesday following the Wednesday General Meeting. For the October Newsletter, deadline is **Tuesday, September 15**. Please send you articles/ads to the Newsletter Editor at newsletter@tucsonquiltersguild.com.

SHH-HH PHONE APP FOR TQG MEETINGS

<http://shushapp.com> The shush app allows you turn the volume of your ringer off for whatever amount of time you want. At the end of that time your phone's ringer will be turned on again. It is handy for those of us who forget to turn on the ringer again.

TQG BOARD AND COMMITTEES

President	Karen G. Fisher	president@tucsonquiltersguild.com
Vice President	Marie Morris	vp@tucsonquiltersguild.com
Recording Secretary	Francie McMillan	secretary@tucsonquiltersguild.com
Treasurer	Joyce Province	treasurer@tucsonquiltersguild.com
Endowment/ Donations	<i>OPEN</i>	endowment@tucsonquiltersguild.com
Membership	Joyce Holley	membership@tucsonquiltersguild.com
Member at Large, Evening	<i>OPEN</i>	memberatlarge-pm@tucsonquiltersguild.com
Member at Large, Morning	Joline Albaugh	memberatlarge-am@tucsonquiltersguild.com
Programs Director	Kathy Barton	programs@tucsonquiltersguild.com
Programs Co-Director	<i>OPEN</i>	programs-co@tucsonquiltersguild.com
2021 Quilt Show Director	Pamela Golliet	quiltfiesta@tucsonquiltersguild.com
2021 Quilt Show Co-Director	<i>OPEN</i>	

Dress a Bear	Joyce Bott	
Bee Keeper	Elizabeth Sonnenfeld	
Education	<i>OPEN</i>	
Finance	<i>OPEN</i>	
Guild Pins	<i>OPEN</i>	
Guild Publicity	<i>OPEN</i>	
Historian	Joyce Harrison	historian@tucsonquiltersguild.com
Hospitality	Chris McCollum	
Library	Janet Chumbley	library@tucsonquiltersguild.com
Newsletter	Francie McMillan	newsletter@tucsonquiltersguild.com
Pattern of the Month	<i>OPEN</i>	
Quilt-a-Thon	Linda Begega	quilt-a-thon@tucsonquiltersguild.com
Quilting for Others	Kathryn Wald	quilting4others@tucsonquiltersguild.com
Opportunity Quilt 2020	<i>OPEN</i>	
Record Keeper	Chris McCollum	
Website	Pilar Dougall	website@tucsonquiltersguild.com



Supplement to August 2014 Pattern of the Month

By Evelyn George

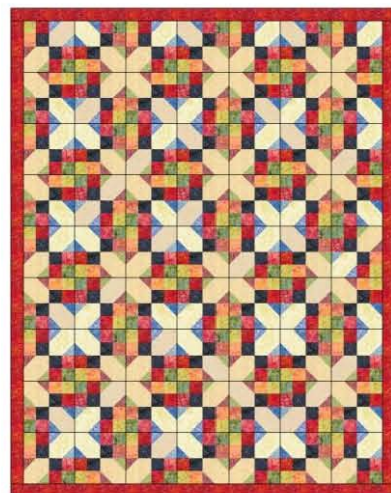
Fly Away Four Patch Variations

- Look what happens by varying colors, layouts, and the positions of light, medium and dark!

Two distinctly darker squares in the middle of scrappy block, and blocks arranged to form X's→

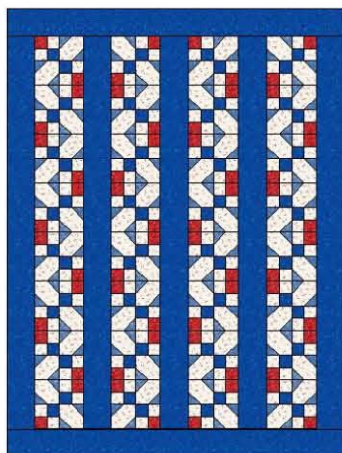
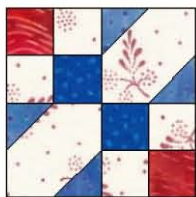


8" block



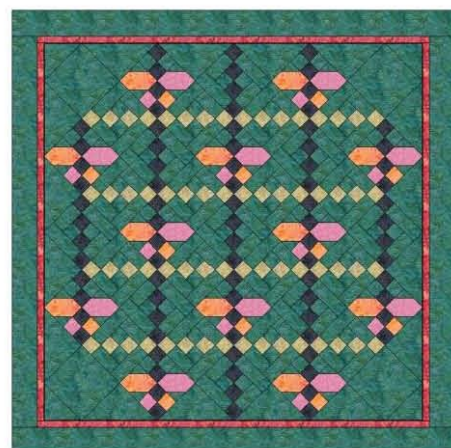
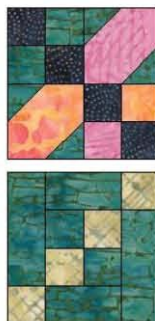
63 blocks, 60" x 76"

Symmetrically colored blocks in a strippy setting→



~54" x 73", 8 blocks per row
(4½" sashing & borders)

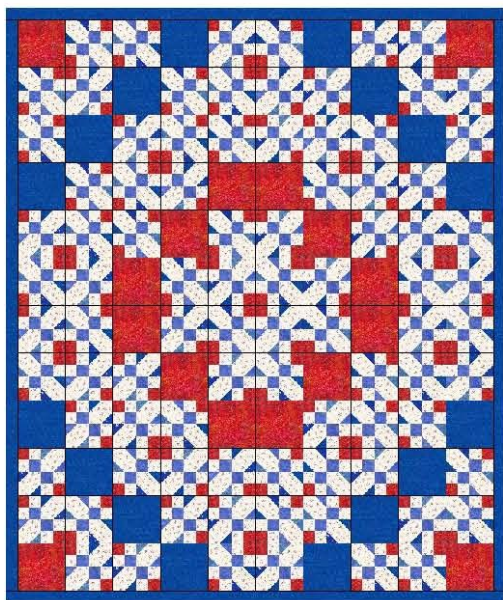
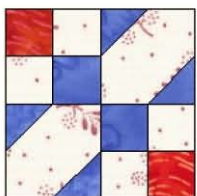
Colored like butterflies, and alternated with chain blocks, set on point →



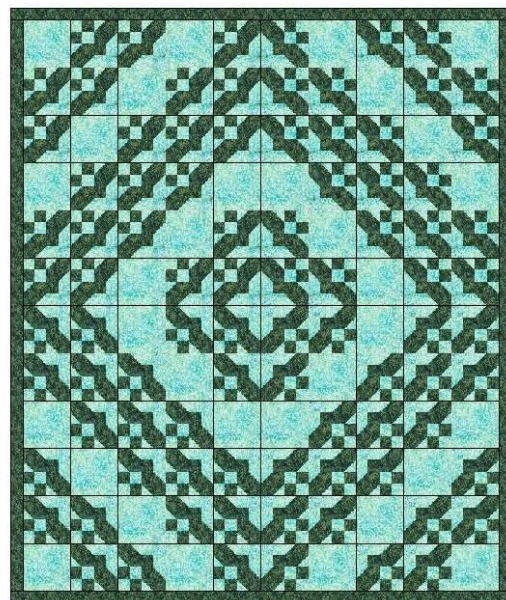
~65" x 65"

Medallion arrangements can be made with the addition of plain blocks:

84" x 100"
with 2"
borders



Different rotations, just two colors, and note that "wings" are now dark ↓



--Yes, these are all the same basic **Fly Away Four Patch** blocks! (see POM Aug. 2014 for directions)

2021 Tucson Quilt Fiesta! Entry Information

Requirements: You must be an active TQG member as of October 14, 2020 to enter any quilts in the show. All entries must have been made by, worked on by, or be owned by, the member. Entries may not have been displayed at a previous TQG show.

Entries: Each member may submit up to 3 entries and have up to 2 of them judged. (This is relatively NEW- We will not be extending judging into a third day, so we will only be able to accept around 175 quilts for judging!) Be sure to mark the priority number for each quilt on your entry forms. Second and third priority entries will be accepted on a space-available basis. **EVEN IF YOU ONLY SUBMIT ONE ENTRY, PLEASE MARK IT AS PRIORITY #1!**

Entry Forms: Each quilt must have a separate and COMPLETE entry form. Be sure to fill out the ENTIRE form - it is ALL necessary information! Please DO NOT print 2-sided, since each page goes to a different part of the quilt show committee. Entry forms may be mailed in advance, and MUST be postmarked no later than Friday, October 23, 2020. Deadlines for in-person submission are the October 13 and 14 2020 guild meetings.

Entry Fees have changed!!: Each member shall pay a \$2 non-refundable fee to submit up to 3 quilts - which covers postage if we have to mail your claim check/ID tags. For the first quilt the member wants judged there will be an additional \$5 fee (\$7 total). For the second judged quilt, the fee will be \$10 additional (\$17 total). Checks should be made out to "Tucson Quilters Guild".

Entry forms and fees should be mailed to:

Kathie Miller
2530 N. Summit Dr.
Tucson, AZ 85745

Categories, Definitions and Descriptions: PLEASE CAREFULLY READ ALL THE INFORMATION ON THE ATTACHED PAGE! This information can change from year to year and it is important that you read and understand it before submitting your forms! Read through the category descriptions and select the most appropriate one. The committee reserves the right to break categories down further based on number and/or nature of entries. Please feel free to contact:

Kathie Miller (kmmiller@hotmail.com/520-743-7025) or
Karen Kelter (azgal39@yahoo.com/319-0326) if you have ANY questions.

Awards for Judged Quilts: The judges will have 1st, 2nd, 3rd, and Honorable Mention ribbons available for each judged category. They may or may not award all available ribbons. They will also have special award ribbons (Best in Show, Best Use of Color, etc.) and will award these ribbons at their discretion.

Viewers' Choice Awards: In addition to the judges' awards, the viewing public will have the opportunity to choose their favorites from among ALL the entered quilts. The Viewers' Choice committee will tabulate the results and present awards for 1st, 2nd, 3rd, and Honorable Mentions.

Quilt Delivery and Pick-up: All quilts will be turned in at the January General Meetings (January 5-6) and will be picked up at the Pima County Fairgrounds Old Pueblo Hall Saturday, January 16, 2021 between 5:30 and 6:30 pm after take-down is complete.

Miscellaneous: Further details about hanging sleeves, pillowcases, labeling, etc. will be in the letter you receive after all the entries have been received and reviewed. However, please note that no bag larger than a king size pillowcase (20" x 36") will be accepted. **Quilts that cannot be folded must be submitted on a pool noodle cut to the appropriate length and placed in an appropriate sized bag and prior approval must be obtained from a member of the Judging Committee. Quilts that cannot be folded or rolled CANNOT be accepted!!**

2021 Quilt Fiesta!
Categories, Definitions and Descriptions

For the purposes of this show, a quilt consists of three layers (a top, batting, and a backing). Tied quilts (and unquilted items such as a Cathedral Window or Yo-Yo) will be accepted only in the “Other” category and quilts with false backs may be entered but will NOT be accepted for judging. Block-of-the-Month and quilts made from kits WILL be accepted and, if judged, should be entered in the appropriate category. **Please read all of this information carefully, as categories and descriptions might have changed!**

CATEGORY 2000 – NON-JUDGED - ALL ITEMS NOT BEING JUDGED ARE PLACED IN THIS CATEGORY REGARDLESS OF TECHNIQUE USED!

100 – One Person, Primarily Pieced, Hand Quilted Quilts created by a single individual that are primarily pieced and hand quilted should be placed in this category. The piecing may be by hand or machine or both.

200 – One Person, Primarily Pieced, Machine Quilted Quilts created by a single individual that are primarily pieced and machine quilted should be placed in this category. The piecing may be by hand or machine or both.

300 – One Person, Primarily Appliquéd, Hand Quilted Quilts created by a single individual that are primarily appliquéd and hand quilted should be placed in this category. The appliquéd may be by hand or machine or both.

400 – One Person, Primarily Appliquéd, Machine Quilted All quilts created by a single individual that are primarily appliquéd and machine quilted should be placed in this category. The appliquéd may be by hand or machine or both.

appliquéd and machine quilted should be placed in this category. The appliquéd may be by hand or machine or both.

500 – Two Persons, Primarily Pieced, Hand or Machine Quilted All quilts that are primarily pieced and which were created by exactly two people - with any division of labor - should be placed in this category.

600 – Two Persons, Primarily Appliquéd, Hand or Machine Quilted All quilts that are primarily appliquéd and which were created by exactly two people - with any division of labor - should be placed in this category.

700 – Group (3 or more persons), Hand or Machine Quilted All quilts created by three or more people with any techniques and any division of labor, including round robins, bee quilts, etc., should be placed in this category.

800 – Miniature, Hand or Machine Quilted Any techniques may be used (piecing, appliquéd, whole cloth, painting, etc.), but a miniature is a small-scale replica of a full-sized quilt. All aspects of the quilt should be in proportion, including the appliquéd, piecing, quilting, fabrics, borders, and finishing. The longest side may not exceed 24” and the individual blocks (if any) may not exceed 4”.

900 - Modern Quilts in this category must include one or more of the following: updated and/or reinterpreted classic quilt designs, the bold use of color and/or prints, high contrast and graphic areas of solid color, improvisational piecing, minimalism, expansive negative space, asymmetry, non-traditional layouts, and alternate grid work.

1000 - Art - Pictorial/Whimsical This should be an original design representing a recognizable person, place or thing; including caricature, fairy tale and cartoon style. Any techniques (including works from photographs and digitally enhanced quilts) may be used. Quilts made from or adapted from publicly available patterns are NOT eligible in this category. Any techniques may be used.

1100 - Art - Abstract/Graphic This should be an original design which is abstract or graphic and not based on an existing quilt or another artist’s interpretation of the same subject matter. Quilts made from or adapted from publicly available patterns are NOT eligible in this category. Any techniques may be used.

1200 - Other The primary design showcases a special technique other than piecing or appliquéd. This may include but is not limited to: whole cloth with emphasis on the quilting, embroidery by hand or machine, cathedral windows, yoyos and crazy quilts. Quilts in this category may or may not include visible quilting stitches, depending on technique.

STAPLE HERE

1. STAPLE a 4" x 6" photo of your quilt here with your name, Guild Member number, title of entry and an arrow indicating the "TOP" of the quilt on the back of your photo. **Please be sure your photo is of sufficient quality to be representative of the quilt!**

2. **PAPER CLIP** your entry fee(s) on your Priority #1 entry form. You may include cash or check (\$2, \$7, \$17 - see p. 1). Make your check out to the Tucson Quilters Guild.

3. Turn in your entry forms at a Guild meeting or mail them. The deadlines for in-person submission are the **October general meetings (October 13 & 14)**. The postmark deadline for mailed entries is **Friday, October 23**. Submit mailed entries to:

Kathie Miller

2530 N. Summit Dr.

Tucson, AZ 85745

If you have ANY questions about this form or the categories, you can email or call:

Kathie Miller (kmmiller@hotmail.com/743-7025) or

Karen Kelter (azgal39@yahoo.com/319-0326)

PLEASE CAREFULLY READ THE "CATEGORIES, DEFINITIONS AND DESCRIPTIONS" PAGE BEFORE FILLING OUT YOUR ENTRY FORMS! REMEMBER - NON-JUDGED QUILTS WILL ALL BE CATEGORY 2000!

LATE ENTRIES AND INCOMPLETE OR INCORRECT ENTRY FORMS WILL NOT BE ACCEPTED!

PHOTO AND CASH/CHECK SHOULD NOT EXTEND BELOW THIS LINE-----

2020 Tucson Quilt Fiesta! Entry Form

Member Name _____ Guild Member # _____

Street Address _____

City, State, Zip _____

Phone _____ Email _____

Quilt Title _____ Priority # _____

Width in inches (horizontal) _____ Height in inches(vertical) _____

Top made by _____

Quilted by _____

Is the quilter a professional? ____ YES ____ NO ____

Was quilt made from a KIT or BoM which included any fabric? ____ YES ____ NO

Judged? ____ YES Category _____

____ NO Category 2000

Techniques used (mark all that apply) ____ Hand Piecing ____ Hand Quilting ____ Hand Applique ____

____ Hand Embroidery ____ Mach. Piecing ____ Mach. Quilting ____ Mach. Applique ____ Mach. Embroidery ____

____ Beading ____ Painting ____ Other (describe) _____

NOTE: The Tucson Quilters Guild assumes NO responsibility for quilts displayed at the show. Submissions include permission for photography of your entry by visitors, media, and Show Committee.

Member's Signature: _____

Payment Amount & Method _____

Date Received _____

2021 Tucson Quilt Fiesta! Entry Form

The following information will appear on the ID tag displayed with your quilt.

Entrant _____

Quilt Title _____

Top Made By _____

Quilted By _____

Category # _____

Pattern Source _____
(Name of book, pattern, class, etc., or "original design" (see definition of art/original categories found on the Categories, Definitions and Descriptions page).

Description of quilt _____

(Use the space above to provide details about your quilt. You might include information about the materials and/or techniques used, or describe your inspiration or the reason for making this quilt. Please do NOT use more than ~ 40 words in your description - space on the ID Tag is limited!)

Is this quilt being judged? ___ YES ___ NO

Is this quilt for sale? ___ YES ___ NO _____ PRICE

WHEN YOU PRINT YOUR ENTRY FORMS PLEASE PRINT ON SEPARATE PAGES RATHER THAN 2-SIDED! THESE TWO PAGES NEED TO BE SEPARATE AS THEY GO TO DIFFERENT PARTS OF THE QUILT SHOW COMMITTEE.

Thank you for sharing your quilt! Please be sure to sign up for a hostess shift at the show! Remember, many hands make light work!