

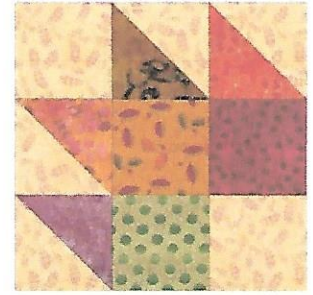


# Pattern of the Month - October 2017 "Autumn Rush"

by Evelyn George

--part 2, add some Leaves!

Tucson  
Quilters  
GUILD



Here's another block using Triangle Squares. Start by making some assorted scrappy light/dark Triangle Squares (*Please refer to directions in the September 2017 pattern, Autumn Rush - part 1*), then follow cutting and block directions below, to quickly make a 9-patch Autumn Leaf block that comes out the same size as your Autumn Rush blocks (**9½" unfinished; 9" finished**). Make a bunch of pretty leaves to scatter into your quilt, too!

Here's how:

### For each Autumn Leaf Block:

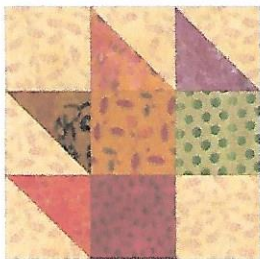
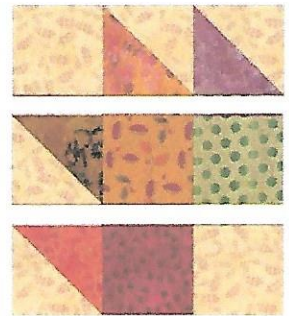
Make 4 assorted light/dark Triangle Squares (measuring 3½")

Cut 5 3½" squares - (3 of assorted darker leaf colors and 2 of the background fabric)

Arrange into 3 rows as shown, with the 2 background squares positioned at opposite corners, and remaining squares and light/ dark triangles oriented as shown, right, →

to make the leaf shape. Sew into rows. Press row seams in opposite directions.

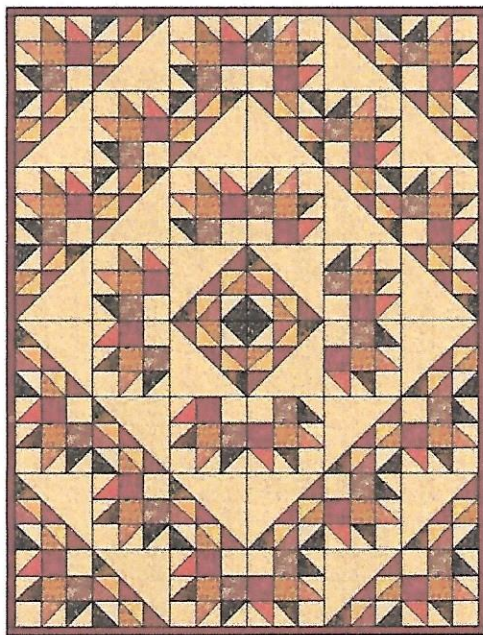
Then stitch rows together to make the 9-patch Autumn Leaf Block.



Autumn Leaf Block

Now combine some of these "Leaf" blocks with the "Rush" Blocks in part 1, and play with the arrangement, to make a lovely "Autumn Rush" quilt of your own design!

Here are a few other ideas for using Rush and Leaf blocks:



54" x 72" with 24 Rush blocks and 24 Leaf blocks

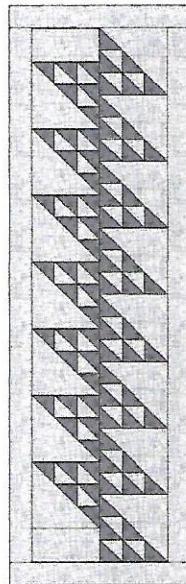
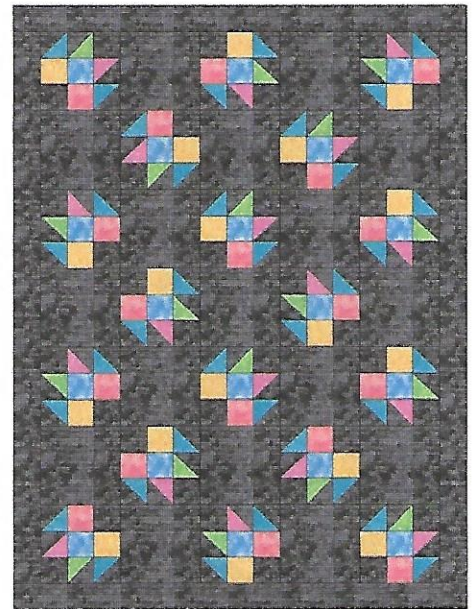


Table Runner 24" x 78"  
with 3" borders  
15 Rush blocks (2 colors)  
(row on left has a half-drop)



18 Leaf blocks and 17 plain squares  
51" x 69" with 3" borders

September/October 2017 POM  
Quilt Ideas Using Autumn Rush and Leaf Blocks

