

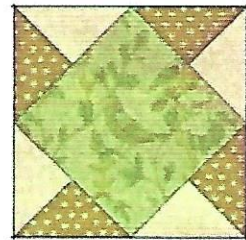
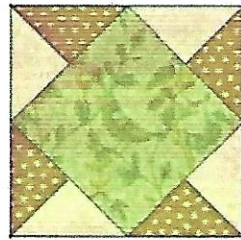


Pattern of the Month - June 2013

by Evelyn George

"Right and Left Pinwheels"

6" finished block size



This is an old traditional block, dating to the 1930's or earlier. Originally made with templates, it can be made quickly today with rotary cutting. Several different designs are possible with these blocks, depending on choice of fabrics, and whether you sew the blocks directly together, or put sashing or alternate blocks in between. *The following directions make 2 blocks -- one spins right and one spins left. They work well together in a quilt.*

Cutting

Cut 2 4 3/4" squares Medium print, for block Centers

Cut 2 4 3/4" squares each, Light and Dark, for Corner Triangle Units

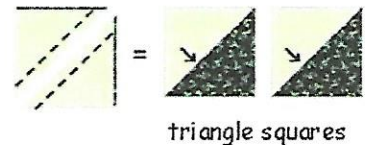
Corner Triangle Units

Draw a diagonal line from corner to corner on the *wrong* side of the Light squares.

Place light square on top of Dark, *right sides together*.

Stitch 1/4" away from the line, on both sides of the line. Cut apart on the drawn line to make two triangle squares. Press seam allowances toward the dark.

Repeat with the other light and dark square, to make a total of 4 triangle squares.



triangle squares

Cut each triangle square in half diagonally, cutting *across* the stitched seam as shown below.



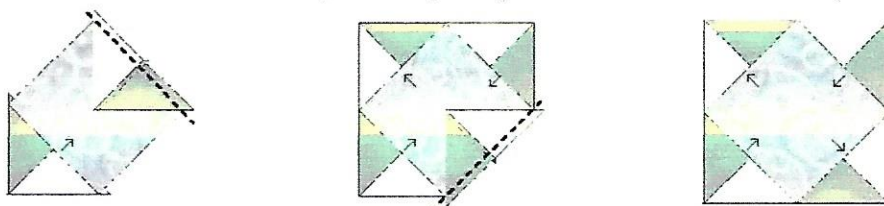
2 Corner Triangle Units

One of the Light/Dark triangle units will have Dark on the right; the other, Dark on the left. ↑

Place the four right-handed Corner Triangle Units in one stack, along with a Center square; and the four left-handed ones in another stack, with a Center square. Each stack will make one block.

Block Construction

Make sure the 4 Triangle Units in each block are either all right or all left. Fold Center square in quarters, and lightly press a small crease at middle of each side (this is to match with center seams in the Triangle Units). Place Triangle Units on two opposite sides of the Center square, with right sides together, matching center seams with fold mark. The triangles are slightly oversized, so there will be extra fabric extending on each end; just match the centers, and stitch a 1/4" seam. Press seams *toward center square*. Add Triangle Units on other two sides; press these seams *toward corners of block*. (Extending triangles will be trimmed off when you square up the block.)

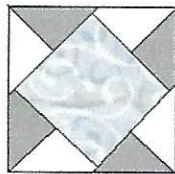


pressing shown by arrows

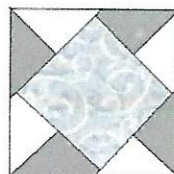
Right and Left Pinwheels, cont'd.

Sew second block using the other group of Triangle Units. You will now have a right hand block and a left hand one; they are slightly oversize, so use your $6 \frac{1}{2}$ " square-up ruler to trim them to size. Keep corners of ruler aligned at diagonal seam lines, making sure to leave a $\frac{1}{4}$ " seam allowance on sides of block, extending beyond points of Center square. Trim off edges, to make the block $6 \frac{1}{2}$ " square.

seam allowance extends $\frac{1}{4}$ " beyond points →

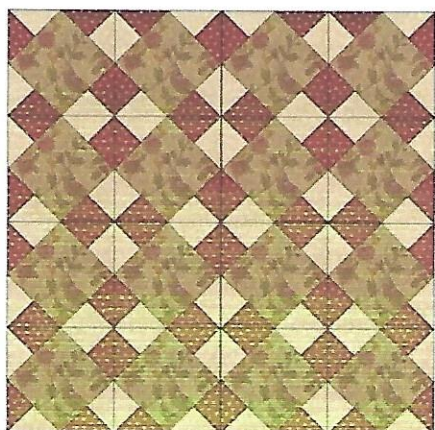


Right Hand Pinwheel

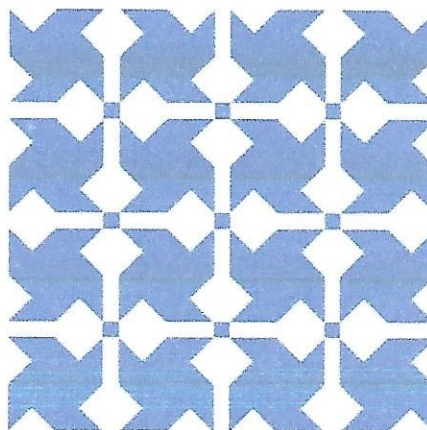


Left Hand Pinwheel

Below you can see how alternating left and right 3-color blocks might look in reproduction fabrics, set directly together (not particularly interesting; and there are easier ways to get this result!):



Or, how about just 2 colors, and add 1" sashing? (these are also alternating left and right blocks):



How about a scrappy interpretation? (My favorite!)

Cut 48 $4 \frac{3}{4}$ " squares (4 each of 12 different colors)

White background (cut 24 $4 \frac{3}{4}$ " squares)

Make 24 pinwheel blocks (a right and left of each color)

Cut 24 $6 \frac{1}{2}$ " plain white squares to alternate with pinwheels.

Randomly arrange left and right versions, distributing colors.

Add 3" borders (cut $3 \frac{1}{2}$ "") for a quilt about 42" x 54".

So many different looks! What will you do with this old favorite?

