



FIESTA NEWS!

Quilt Fiesta!

February 19, 20, 21
Friday—Saturday 9am—5pm
Sunday 10am—4 pm
Guest Speaker: Beth Helfter
Tucson Convention Center
\$10—day \$20 – 3 day pass

President's Message

Finally, it's time! It's so exciting. Is it really here? I wondered how it would look. Did I make the correct choices? What will everyone think? So much work to get it finished.

You're probably wondering what I'm mumbling about. Why it's almost time for our [Tucson Quilt Fiesta](#), February 19-21 at the Tucson Convention Center. And if you haven't figured it out, I can hardly wait to see all your wonderful quilts. The work you put into them and the love that shows in your work will be so exciting to see. And there will be so many new things you'll learn from looking at these wonderful works of art. Yes, folks, they truly are works of love and art. See you there.

DROP OFF OF QUILTS

All quilts, judged or non-judged, **MUST be brought to the February 9th or 10th Guild Meetings**. If you are unable to bring your quilt(s), ask a friend or relative to deliver them for you. If you absolutely cannot get your quilt(s) to either of the Guild meetings, call Betty Anderson 743-3209. Leave a message if she doesn't get to the phone, she will call you back.

See page 2 of newsletter for suggestions from the Show co-chairs.

2016 Calendar

Business Meeting:
Wed, Feb. 3, 9:30 AM

General Meetings:
Tue., Feb. 9, 7:00 PM
Wed., Feb. 10, 9:30 AM

Submission deadline for the
February Newsletter:
Wed., Feb. 17
Articles should be sent to
Newsletter Editor
Diane Hartman at
newsletter@tucsonquiltersguild.com

2016 Quilt Fiesta! Quilt Show meetings are at the Tucson Police Substation on the NW corner of Alvernon and 22nd Street. Everyone is welcome to attend.

Final Meeting before show
January 29, 10 AM
No meeting in February

Turn in quilts at meetings
Feb. 9 and 10
2016 Quilt Fiesta! at TCC
Feb. 19-21, 2016

2016 Quilt Fiesta!

From the Quilt Fiesta Show Co-chairs

This is the last Newsletter before the Quilt Fiesta. We hope all of the quilts are finished and ready to be turned in. As we mentioned at the January Guild meetings, here are a few important reminders for getting your quilt(s) ready for the show.

1. All quilts must have a **4 inch sleeve** (Category 1100 requires a 3 inch sleeve); the **quilt ID label** should be **sewn** to the **lower left hand corner of the back of the quilt**. Cover your personal label with fabric to allow for anonymity during judging; **ID label for the quilt bag** should be **sewn near the center of the open end**. Please do not put your name on the quilt bag.
2. Before you put your quilt into the bag please **make sure it is clean and odor free**. Use a lint roller on the front and the back to remove, lint, loose threads, and pet hair. If there is a smoker in your household, air out the quilt and the bag, then think about keeping the quilt in a smoke free environment until the show.
3. Make sure the **quilt bag** is **not too big or too small**, no flannel, no Velcro, no zippers, no safety pins, no draw-strings, and no ties. And **clean, inside and out**. Think lint roller again, little details make a difference.
4. Please fold your quilt top to bottom, then again as needed, so that **when placed in the bag both the ID label and sleeve are easily visible at the open end**. This is a help for those who will be handling your quilt.
5. Special Handling requires pre-approval. Please see your Instruction letter for details.

Good Things to Remember When Coming to the Quilt Show: Wear comfortable shoes! If you want to put your purse in your trunk, it's safer to do it before you leave home! We were unable to get either the Girl Scouts or the Boy Scouts interested in running a Sack Sitters Booth this year. This means there will be no place to store your coat or packages.

We hope everyone will come to the Quilt Fiesta, bring a friend or relative who has never been to a quilt show, enjoy all the beautiful quilts, maybe see something new and amazing at one of the vendor booths and have a wonderful time!

Quilt Fiesta Co-Chairs:

Joan Swanson jbswanso@gmail.com

Betty Anderson bettyca@comcast.net

Quilt Hanging and Take Down

We would like to thank everyone who has signed up to help. You should soon be receiving Emailed instructions about what to expect and when to arrive at the TCC. There is still time to volunteer. We won't be taking Sign –Ups at the February Meetings, but you can contact us by Email: Hanging: Paulette Worman, lavenderlady@centurylink.net. Take – Down: Betty Anderson, bettyca@comcast.net.

PICK UP OF QUILTS

You **MUST pick up your quilt at the Tucson Convention Center, Sunday February 21, 2016** after the show, beginning at 5:30 pm. Please be patient...we will be handling almost 300 quilts. For security and safety reasons, no quilts will be released until they have all been taken down, packaged in their cloth bags, and organized. Also, all Hardware must be down and safely out of the way. **You must have your Claim check and initial a form indicating that you received your quilt.** If you ask a friend or relative to pick up your quilt, that person must have the claim check and initial the form.

2016 Quilt Fiesta!

Guest Speaker: Beth Helfter

'In Her Own Words'

"Over the years I've seen my design preferences evolve from mainly machine applique to mainly scrappy, but I still like to mix it up with new stuff all the time. My one constant design style is one of "fun over fuss," and I unapologetically preach the gospel of "Perfection is Overrated" through my trunk show lecture of the same name. Who needs matching points fouling up an otherwise cool design, after all?

Since founding EvaPaige Quilt Designs in 2005, I have published over 40 patterns and my work has been featured in **Quilter's World**, **The Quilter**, **Quiltmaker's 100 Blocks**, and **Cotton Spice** magazines. I was honored to be appointed to the 2014 Quiltmaker magazine "Scrap Squad" along with five other quilters, all of us chosen to remake one particular design per issue in all scraps. Nothing has ever been more right up my alley."

About EvaPaige Quilt Designs

"Inspired Designs, Relaxed Attitude. It's what you'll find from this quilt pattern designer who loves creating "fun over fuss" designs and sharing them with the quilting community.

Because I have a hard time getting in a box, my patterns feature a little bit of everything, but do tend to focus on the scrappy. To me, adding more fabrics to a design only adds to the fun, and a cleaned up scrap bin is a happy scrap bin."

Vintage Quilt Turning

This is it! Soon all will be able to see 16 wonderful quilts! Owners, please bring your quilts to either the evening or daytime February meetings where Sue will accept them. Owners should already have received from Sue, by snail mail, quilt tags and other information needed before their quilt submission.

Committee members have worked hard on the narratives. As noted before, each narrative is about 150 words! The final edit is finished. You will enjoy learning more about the quilts, ranging in age from circa 1840 to the 1950s!

Sheryl Verts has filled most slots for narrators and turners. However, a few more are needed. Remember that, **newcomers always are welcome**. If you'd like to join the fun, please notify Sheryl, Sue, or a committee member. Any of the group would be happy to explain the process.

Please contact Sue Franklin, chair, at 520.490.4721) or suevette63@comcast.net, or committee members Judy Breneman at judyanneb@cox.net, Eileen Mechling at jemech@comcast.net, Kathie Miller at kmmmiller@hotmail.com or Sheryl Verts at ksherylv@yahoo.com with questions.

2016 Quilt Fiesta!

RAFFLE TICKETS

Thanks to all of the members who have already turned in your ticket stubs and monies for your sales or purchases. For those of you who have not done so, please try to get the stubs and money to me by the February meetings. Because I try to separate member sales from show sales, tickets turned in by members at the show make the job difficult.

If you still have stubs to return and cannot make the Feb. meetings, please mail them to me, so that I can credit you with the sale. My address is in the envelope that your tickets are in, or you may call or e-mail me for the information.

THANK YOU AGAIN, FOR ALL OF YOUR PARTICIPATION THIS YEAR.

PATTY KRUSE 885-2069 krusequilter@yahoo.com

WORKSHOP ATTENDEES: Display Your Work at Show

There will be a display of quilt samples from Tucson Quilters Guild workshops at the TQG Quilt Show in February 2016. I am asking for the use of any completed quilt samples from TQG workshops to display at the TQG Show.

I had quite a few people who volunteered their quilt samples from our workshops last year and I am hoping to get more this year. If you have such a quilt that you could lend me, please e-mail me at mary-blount2@gmail.com. You can turn them in to the current Program Chairs, Connie German and Riley Zoda, at their table. Thank you and I look forward to hearing from many of you!

Mary Blount

DVD's

Last Chance to reserve DVD before show is February Meeting

Save 15% by pre-ordering your 2016 Quilt Fiesta! DVD at either the January or February Guild meetings. The DVD contains high resolution pictures of all the quilts entered and slideshows (that can be viewed from your TV or computer) of all the quilts plus Vintage Bed Turning, President's Challenge, New Member Challenge and Kid's Row.

At the Quilt Show the DVD will sell for \$12. See Alice Wilder by February 10, 2016 and reserve your copy for only \$10.



2018 Raffle Quilt Design

The winner is..... There were many ballots that marked both designs and asked if they couldn't be combined somehow. That seemed like a good idea, so that is what is in the works. We will keep you posted.

Tucson Quilters Guild

PROGRAM NOTES

Program Co-Chairs Connie German and Reilly Zoda encourage you to go to the Guild website under Future Speakers to see all the exciting speakers coming to our Guild. Listed are dates that each speaker will be lecturing and teaching at the Guild along with the workshops offered and their website. Just click on the website address to look at the workshops in detail. Most websites will also have the Supply Lists needed for the class. The 1 day classes are \$50 and the 2 day classes are \$100. The classes are from 9:00 AM to 3:30 PM each day and they are held at the St. Francis Cabrini Church, 3201 E. Presidio, Tucson, AZ 85716 in the large multi-purpose room (the same location as the lectures). These workshops are a great opportunity for you to learn new quilting skills at a very reasonable price from professional quilters from all over the United States!

Upcoming Programs:

February 2016

February 9 & 10: last minute information about the Quilt Fiesta! - February 19-21, 2016

Show Quilts to be turned in at meetings

March 2016 - [Vikki Pignatelli](#)

March 8 & 9 Lecture: "Nurture Your Creative Spirit"

March 10 Workshop: "Crazy About Curves: The Basics" [Supply List](#) 13 openings

March 11 Workshop: "Adding Dimension and Manipulations to Quilts: The Basics" [Supply List](#) 11 openings

April 2016 - [Bonnie McCaffery](#)

April 12 & 13 Lecture: "Inspiration & Development of a Quilt Artist"

**Due to insufficient enrollment, the program coordinators have had no choice
but to cancel Bonnie McCaffrey's workshops in April.**

She will still come to Tucson and be here to give her lectures at our April Guild meetings.

May 2016 - [Rita Verroca](#)

May 10 & 11 Lecture: "Travel Through Quilt History"

May 12 Workshop: "Flower Bouquet" [Supply List](#) 14 openings

May 13 Workshop: "Monarch Butterfly" [Supply List](#) 14 openings

Attend both classes, project: Flowers for Martha [Supply List](#)

June 2016 - [Gail Garber](#)

June 7 & 8 Lecture: "Liberalism in Quilting, Free Form Art Quilts"

June 9 Workshop: "Scrumptious Star Stitchery"

June 10 Workshop: "Designing Circular Borders"

Sign-ups open February 2016

July 2016

Round Robin

August 2016

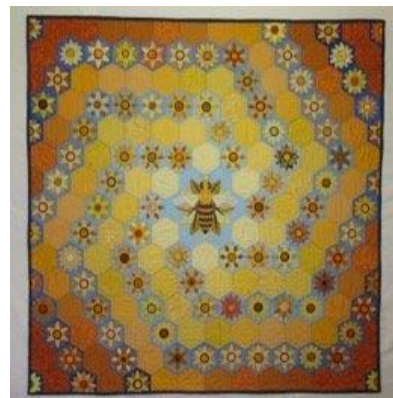
Quilt-a-Thon

The Program committee would like to thank the members of the Guild who have been here the last two years taking workshops and listening to the lectures. We have had some great speakers thanks to the previous coordinators and I am in hopes that you enjoy the speakers we have chosen for the next two years. It is a daunting task to book teachers who will please everyone. Thanks again for your support. Connie

“Bees for Ethiopia” Update

If you have the February/March 2016 issue of **Quilters Newsletter Magazine**, look on page 77 and you will see a photo of the **Bees for Ethiopia** quilt, designed by Hope Johnson using sunflower blocks made last year by members of Tucson Quilters Guild and the Guild in Shelburne, Vermont. There is also a story and photo of the quilt on the front page of our own website. If you helped with this quilt, can you find your own block?

Evelyn George



QUILT FOR A CAUSE

If you have decided to donate a quilt you entered in the show to Quilt For a Cause after the show, we would be happy to pick it up on Sunday, at take down --simply write Quilt For a Cause on the quilt claim slip, and bring the slip to the Quilt For a Cause booth before takedown, along with your completed QFaC quilt donation form. We will have extra forms at the booth, if you need one!

We want to thank everyone who went on our two buses to **Road to California** last month, as well as our local quilt shops for donating bus prizes. Thanks to your support, Quilt For a Cause, Inc. continues to be one of Tucson's most successful charities, and it's because we are running on "Quilter Power!" We can and are making a difference in the fight against breast and gynecologic cancers.

QUILTING FOR OTHERS

Mary Meserve and I are pleased to continue the mission of the Quilting For Others Committee for 2016. We have some great things planned and are eager to get started with another successful year.

- We are continuing the drive for Pillowcases and Christmas Stockings. The stocking has now changed to the smaller size, unfortunately the group that receives them cannot fill them up as generously as in years past. The new size will be uploaded to the website. We will need at least 250 stockings and pillowcases this December.
- We are requesting if you make pillowcases, please do make them for the kids. We really need bright, cheerful pillowcases. Remember, these go to children (and their siblings) who are undergoing cancer treatment, so happy colors are best.
- In order to facilitate the making of kits for the pillowcases, we are going to have a drive for fabrics. The storage has lots, however it is more suited for scrap quilts than the bright kids pillowcases.

***Bring to the meeting 1 yard of kid print/bright/solids/etc.
and we'll give you a ticket towards a prize bag each month.
You may be the lucky winner of some great quilting stuff!***

- Our new recipient of the toiletries is EMERGE! Emerge! is the Center Against Domestic Abuse. They are so happy to be able to receive our gift of the soaps, shampoos, etc. that you so generously give. They do have a list of other items they need, so if you visit their website at www.emergecenter.org and wish to bring something to the meeting, I'll be happy to deliver. After the January meeting I took them the toiletries and 12 quilts. (Please remember they can accept ONLY new items.)
- Peppi's House (a local hospice) has asked us to help them by providing pillowcases for Veterans. Do you have Red/White/Blues to make into a pillowcase? They have asked for 100 this year. At our February meeting we'll have some kits made up for those.
- The Committee needs your help with finishing quilts. You can assist us by: piecing a top together, quilting a top, or by adding a binding, if needed.

We thank you so much for being generous with your fabric, time and talents! The recipients in our community are so grateful!

Kathy Harris, Mary Meserve Quilting For Others

Charity Project Request!



My daughter, Ann, who works at the Lawton/Ft. Sill Veterans Center in Lawton, OK, has asked for 'Fidget Quilts' for some of their Alzheimer/Dementia residents. The majority of residents in this home are men since it is a home for military veterans. Keeping this population in mind, the focus for these little quilts should be more masculine. The quilts need to be washable and sturdy. They do NOT need to be 'show quality'!

Sally Dickinson, Grants Director

Guidelines and suggestions for these quilts:

Size – 18" to 24" square. This can be a nine patch of 6" finished squares, a 16 patch of either 6" finished squares, or 5" finished squares, or a 25 patch of 4" finished squares.

Fabric choices – These can be of many different fabric types and textures – corduroy, fleece, Minke, softer upholstery fabrics, denim, flannels and cottons. The cottons should have visually interesting prints, or could be incorporated in a simple pieced block. Patriotic prints can be used as well.

Embellishments – Ribbon loops, ribbons for tying into bows, rick rack, Velcro strips, Prairie Points, a bow tie, a 'tail' of an old necktie (even the right side of the skinny back part), drapery findings (ball fringe, tassels), eyelets with laces (tack the lace down at the top or bottom so it does not get lost). Given the veteran population, patches from any of the branches of service could be appliquéd onto a square. A pocket could be included – I purchased a pair of child's jeans at Goodwill for the hip pockets and for the denim. I have added a 'Teenie Beanie' baby from a McDonald's promotion securely tacked down. For more ideas, you can do a web search for Alzheimer's Fidget Quilts to see what others have done. I saw one with an attached (top and bottom) cord and large wooden spools that slide up and down on the cord. Use your imagination and have fun!

Backing – Please use either flannel or fleece to help the quilt stay on a lap. These fabrics aren't as slippery as woven cottons.

Finishing – Batting is not required or recommended, especially with the flannel or fleece backings. The quilt top and backing can be sandwiched either with right sides together and stitched around the edges, pillowcase style, then turned right side out and slip stitch the opening closed, or the top and backing can be sandwiched with the wrong sides together and bound – I used a package of extra wide double fold bias tape for binding. As a final step, or before applying the binding, quilt in the ditch along the seams between the blocks to hold the top and backing together.

Do not use – For safety's sake please do not use any zippers, buttons or small charms or beads as embellishments. Make these quilts much as you would for a small child.

The quilts will be collected at the April meetings to be mailed to Oklahoma. Thanks in advance for all your help. –

Sally Dickinson, Grants Director

Tucson Quilters Guild Grants Program

Are you a member of another quilting group that might benefit from receiving a grant to get a quilting project started? Perhaps you are in a bee or a church quilting group that just needs a little extra money to help with a project. Check out the new information and application process found on the left side of our main web page to see if your project might qualify for a grant from the Guild. We encourage you to apply for grant money for your group.

Sally Dickinson, Grants Director

Arizona Quilt Documentation Project – Tucson

By Sue Franklin

In January, the team welcomed winter visitor, Pat Fisher, to the meeting. Pat learned of the Tucson team by reading the *Arizona Quilters Hall of Fame* newsletter. The continuing education segment included a discussion of one patch and medallion quilts. Sue brought examples of one patch quilts, such as *Apple Core* and *Grandmother's Flower Garden*. Sara, too, brought a *Flower Garden* quilt, one that had been well loved and in her family for years. Terry led the discussion on frames versus borders, with the group's conclusion that a framed medallion quilt is likely English made, while one made in this country would be surrounded with borders (also described that way in the Quilt Index). Sue shared a lovely example of a framed English crib quilt, circa 1860.

Rachel brought a book, *The Quilters: Woman and the Domestic Art* to be auctioned. Kate was the lucky bidder on this one. Rachel had two copies of the work and decided this was a good way to give someone else a chance to own it.

The team documented six quilts and it wasn't long before Pat was working along with the team. In fact, she plans to return next month. First on the docket was the *Arizona Quilters Hall of Fame, 2016 Opportunity Quilt, Whirligigs*. The quilt was designed and made by Susie Weaver, with appliqué swirls by Colleen Babcock and Diane Bach. Next, Rachel brought two quilts to document. The first was her mother's, Jane Becksted's work, *Christmas Star*. Rachel also had a star quilt, an 8-Pointed or *LeMoyne Star*.

Terry was proud to show her latest treasure, a lovely white whole cloth *Eagle* quilt, beautifully quilted. One of the most interesting quilts belonged to Tina Willis, a friend of Sandy. Tina got the quilt at a resale shop. The quilt, *Insects and Patchwork*, was paper pieced with pages from children's oriental story books. It had no back so it was fun to look at the tales.

The final quilt was Sue's *Apple Core*. Many of you reading this may remember seeing this circa 1930-40 quilt at *Quilt Fiesta* as Sue has used it for a number of years to cover quilts in the *Vintage Quilt Turning*. Dave Kuskulis, fellow *Tucson Quilters' Guild* member gave the quilt to Sue as he knew it would have a good home.

Next month, the team anticipates documenting fifteen *Quilt for a Cause* quilts. More about these wonderful quilts and all that means in a future newsletter.

If you have questions about quilt documentation or would like to join the Tucson team, please either call or email Tucson liaisons Sue Franklin, (520.490.4721; suevette63@comcast.net) or Terry Gryzb-Wysocki, (520.749.9326; terry-gw@mindspring.com). New members are welcome. Also, if you'd like to just come to watch and view the process; that is possible, too. Training sessions are held monthly from 9:30 until 12:30 at the *Ellie Towne Flowing Wells Community Center* on Ruthrauff Road. Information about quilt documentation teams throughout Arizona may be obtained from Lynn Miller at either 480.632.2819 or azquilt-doc@yahoo.com. Lynn always needs people familiar with the computer to aid her with data entry for the Quilt Index. Lynn can do distance training which takes a couple hours.



Election to be Held at February Meetings

This is a list of the current nominees for the Director positions that will be voted for in February. Under our Bylaws the elections are to take place in February each year. The announcement of nominees was made in January and must be published in the February Newsletter prior to the election. Nominations from the floor will be called for at February meetings prior to the vote.

The names on the ballot below are currently those nominees for each position that need to be filled this year. We welcome additional volunteers to run for any or all positions available this year.

Reilly Zoda, Nominating Committee

TUCSON QUILTERS GUILD BOARD NOMINATIONS 2016-2018 TERM

Secretary..... Jan Johnson

Write in_____

Treasurer.....Dale Dominique

Write in_____

Membership..... Kathy Barton

Write in_____

Programs.....Karen Fisher

Write in_____

Programs.....Denise Withrow

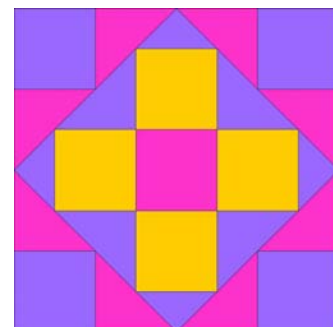
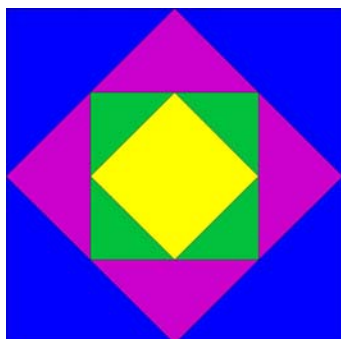
Write in_____

Member at Large (Nights).....Kay Hendricks

Write in_____

Quilt Show co-chair.....Reilly Zoda

Write in_____



BEES, BEES, BEES—Updated!

CENTRAL AREA:

Himmel Park Contact: Ruth Campbell, 792-1639

Where: Himmel Park Library; When: Third Wednesdays, 6:30 PM

EAST SIDE:

Art Quilters Contact: Laura Steiniger, 465-9100

Where: Quilters Market; When: Third Wednesdays, 10 AM to Noon

Charity Bee for more information call Susan 747-8458

Where: Quilters Market

When: 2nd Tuesday of the month at 1:00 pm

Evening Eastside Bee Contact: Arlene Svenson [520-822-8515](tel:520-822-8515)

Where: Unity Church of Peace, 1551 S Eastside Loop

When: First Thursdays, 6:30 – 9 PM

The Evening Eastside Bee does not meet during the summer.

UFO Bee (Bring your own UnFinished Objects) Contact: Mary Meserve, marymes@aol.com

Where: Quilters Market

When: Tuesdays, 9:00 – 11:30 a.m.

Pacific Rim Quilting Bee Asian fabrics, donation quilts

Contact: Annette Meyer, shelbymeयरaz@cox.net; Susan Owara

Where: The Quilt Basket When: First Tuesdays, 10:00 a.m. – noon

East side Saguaro Needlers Bee Contact Joan Gilbert 722-3822.

Meets third Wednesday 1:00-4:00 in members homes.

GREEN VALLEY:

Hexies Bee English Paper Piecing, Contact: Carole Sullivan, 520-762-8652

Where: Friends Indeed Community Center, Green Valley, AZ

When: First Wednesdays, Noon – 3PM

North of the Border Contact: Babs Phillips, 393-6557

Where: M & I Bank, 270 W Continental, Green Valley; When: Thursdays 9:30 – Noon

NORTHWEST:

Mona Lisa Bee on the Northwest side is now open. They are looking for new members. They meet at the Foothills Community Church at 3301 Overton Road on the 2nd Mondays of the month at 9:30 a.m. Anyone who is interested can contact Claudia.

Contact: Claudia Colton [520 395-2628](tel:520-395-2628) cwcolton@comcast.net

SOUTH:

Quilts of Valor Bee Contact: Beth Glass, 241-0359

Where: Eagles Wings Quilting, 3949 E. 29th Street, Tucson, 85711

When: Third Thursdays, 1:00 – 4:00 PM

SOUTHWEST:

Southwest Side Bee All are welcome. Contact: Marie Morris, 520-403-6208 or 520-623-0123.

Where: GracePointe Church, 2555 W. Valencia Rd., Tucson

When: Mondays, 6:30 – 8:00 p.m.



Please contact the Guild Beekeeper, Laurie Mullins at mlauriel@hotmail.com to add, change or correct information about Bees. Open Bees are listed in the newsletter. The closed Bees list is on the TQG member website.



Tucson Quilters Guild

The Guild Basics

Who:	All Members
What:	Business Meeting —First Wednesday of every month in the Church Classroom. General Meetings - Second Wednesday of the month in the morning or the Tuesday evening preceding the second Wednesday - in the Parish Hall.
When:	Business Meeting — 9:30 AM ~ 10:30 AM General Meetings: Tuesday Evening —7:00~9:30 PM Wednesday Morning —9:30 AM~12:00 PM
Where:	St Frances Cabrini Church 3201 E. Presidio Near Fort Lowell and Country Club
(How): Parking	Guild members are asked to refrain from parking in the spaces in front of the Parish office; the Church wants these spaces to remain open for Church members who have business to attend to in the office. This is the small building to the east of our meeting room. PARKING NOTICE: Tuesday evening attendees: The Church's Family Classes are in session again, so PLEASE DO NOT PARK IN THE FRONT LOT. Use the side or back lot.
Why:	Come to get involved with all aspects of the Guild, to make new friends, learn new quilting skills, share, but most of all, to have FUN . But please, do not wear fragrance to meetings .
Cost:	Members (\$30/year, due in March) and Guests (\$5.00/meeting with guest speaker)

LIBRARY INFORMATION

Tuesday Evening Meetings: Open from 5:30 PM to 7 PM only.

Wednesday Morning Meetings: Open from 8:30 AM to 9:30 AM and during the break.

To renew books:

Call Donata Pfisterer the day before the meeting at 733-9557 or email her at:

donatap@photonengr.com

Advertising

Members: \$5.00 for small want ads for

Quilting/sewing related items

Quilt related businesses: \$25 business card size

\$50 1/4 page, \$100 half page

FOR SALE

VIKING HUSKVANA serger #Huskylock 910 w/ Koala table cabinet. Exc. condition-hardly used. Orig: both: \$1,700. Asking: \$1,275. Contact: Yoly Weininger at [520-308-5728](tel:520-308-5728).



EMAIL LIST

The Guild now has an email list for easy communication with the members. Please log into the protected area of the website and put your name and email address into the box at the top of the page. After doing this, you will receive an email. You must click on the link after making the link into one long line. If this works, you will receive another email saying you were successful. If you have any problem with this, email me at quilter@tucsonquiltersguild.com.

Meg Silvern



Tucson Quilters Guild and Tucson's Quilt Fiesta! is on Facebook! Since this is FREE publicity for our Guild and our show, ask your friends to 'like' the page.

What can be better than free?

<https://www.facebook.com/pages/Tucson-Quilters-Guild-Tucson-Quilt-Fiesta/121887434544473>

TQG BOARD AND COMMITTEES

President	Roberta Sipes	rfsipes@gmail.com
Vice President	Elaine Romanelli	Romanellielaine@gmail.com
Endowment/ Donations	Sally Dickinson	749-9815
Membership	Mary Meserve	465-2785
Member at Large, Evening	Kay Hendricks	325-4509
Member at Large, Morning	Evelyn George	325-0166
Programs	Connie German	germanconnie@gmail.com
Programs	Reilly Zoda	sekmet73@cox.net
Quilt Show Co Director	Joan Swanson	jbswanso@gmail.com
Quilt Show Co Director	Betty Anderson	bettyca@comcast.net
Secretary	Barbara Heiman	bjheiman@hotmail.com
Treasurer	Kathy Barton	kathrynbarton@sbcglobal.net
Bears	Christine McCollum	748-9165
Bees	Laurie Mullins	Mlauriel@hotmail.com
Corresponding Secretary	Mary Meserve	465-2785
Finance	Marie Morris	623-0123
Guild Pins	Diane Bach	bachdiane@yahoo.com
Guild Publicity	* open *	
Historian	Cathy Dargel	746-9246
Holiday Block Exchange	July Gilmartin Colleen Babcock	jgilmartin@msn.com cjquilts@att.net
Hospitality	Christine McCollum Marie Luongo	748-9165
Library	Donata Pfisterer	760-0309
Library	Kathryn Wald	749-4772
Newsletter	Joey Nakagawa Diane Hartman	JoeyKiomi@gmail.com dhartman69080@gmail.com
Pattern of the Month	Evelyn George	quilter4ever@cox.net
Quilt A Thon	Paulette Worman Barbara Heiman	lavenderlady@ centurylink.net bjheiman@hotmail.com
Quilting for Others	Mary Meserve Kathy Harris	465-2785 615-0541
Raffle Quilt 2016	Terry Gallegos	749-3424
Raffle Quilt 2017	Colleen Babcock	cjquilts@att.net
Record Keeper	* open *	
Website	Meg Silvern	meg@silvern.com





Mystery Quilt! Mystery Quilt! Mystery Quilt!

--Don't you just love a good mystery? "Summer Surprise", a mystery quilt by our own talented designer, Marie Morris, begins in this issue with Yardage and Clue 1, and continues with monthly clues through May, when the mystery will be revealed. Check out the yardage requirements, go shopping, and get started! It's fun, and everyone's quilt will be different!

Summer Surprise – TQG Mystery Quilt (60" x 72")
 Designed by Marie Morris mimawsquilting@hotmail.com

FEBRUARY 2016: Yardage Requirements and Clue 1

(Attach your fabric swatches here)

Background Fabric: 2½ yards, light color that reads as solid 	
Fabric 1: 1¼ yard, touches Fabric 2 and Background Fabric 	
Fabric 2: 1¼ yard, touches Fabric 1 and Background Fabric 	
Fabric 3: 1 yard, touches Background Fabric 	
Border 1: ½ yard, I recommend it be the same as Fabric 3	
Border 2: 1 yard, either Fabric 1 or 2	
Border Cornerstones: 4½" strip, either Fabric 1 or 2: Hint: if border 2 is Fabric 1, then cornerstones are Fabric 2.... If border 2 is Fabric 2, then cornerstones are Fabric 1.	
Hint: Fabric 1 and Fabric 2 need to contrast.....not blend together	

Clue 1

1. Cut 4 strips, 3½" wide from Fabric 1
2. Cut 4 strips, 3½" wide from Fabric 2
3. Make 4 strip sets (6½" wide) . Figure A
4. Cross cut strip set into 40 sets 3½" wide. Figure B You should get 10 or 11 per strip.
5. Make 20 four-patches. Figure C

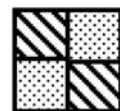
Figure A



Figure B



Figure C





Pattern of the Month - February 2016

By Evelyn George

Heart Strings

Choose some pretty scraps to piece the "string" panel, then use this easy reverse applique technique to make the Heart Strings block. There is a bonus block you can also make with the heart that is cut out --use the two blocks in the same quilt, or use in different projects. Directions are given for a 12" Heart Strings Pillow, but you can make blocks any size you want, for a quilt or other project.



String Panel: Cut 6 to 8 strips about 1" to 1½" wide x about 8" from assorted Valentine prints or other fabrics of your choice. Hint: if your background square is *dark*, choose lighter prints for the String Panel; if your background is *light*, choose darker prints for the String Panel. Piece strips together with ¼" seams to make a String Panel. Press very flat, using steam.

Background: *(Even though this square of fabric, after the heart is cut out of it, will be laid on top of the String Panel before stitching, we are calling it the background because that's the way it will appear when done!)*

Cut a Background square about 1" larger than pillow form (for 12" pillow cut a 13" square.)

Also cut a square for back of pillow, same size as front.

OR, for a quilt, you could cut squares and use hearts any size you choose; if you make smaller hearts, scale down the size of the strings, too.

Make a heart pattern by folding an 8" square of paper in half. Draw a nice, fat half of a heart and cut it out, smoothing any irregularities while you cut. Unfold and view your heart. If it's not quite what you want, make another one, until you have one you really like, and it is a good size for your background square. *(If necessary, add more strings to your pieced panel so it is bigger than the heart.)*

Trace around heart pattern on paper side of Wonder Under ® or other paper-backed fusible. Freehand draw another heart inside first one, keeping the line about ½" away from first line (it doesn't have to be perfect). Draw a third heart outside first one, also keeping the line ½" away from original one. You now have 3 concentric hearts drawn on your paper-backed fusible. Cut out, cutting on only the inner and outer lines, making a 1" wide heart-shaped paper frame. DO NOT cut on the original line, YET!

Decide if you want the heart oriented straight or on-point. Fold square of Background fabric in half (either straight or diagonally), pressing to mark center. Place heart-shaped paper frame, fusible side down, on wrong side of fabric. → Center it visually, using fold as a guide. Fuse in place according to package directions. Cool. NOW cut out heart on original line as smoothly as you can, keeping both inner and outer sections intact. The heart-shaped window will be used to frame your String Panel to make the Heart Strings Block, and the cut-out heart can be fused onto another project.



Bonus Block: *The heart shape that was removed can be fused onto another square, to make a different block, perhaps for back of pillow, or for another project. Suggestion: leave the paper on until you are ready to use it, to avoid ironing mishaps with the fusible.*

Making the applique:

Remove paper around heart-shaped opening in Background square; place square, fusible side down, on top of string pieced panel, making sure there is at least 1 inch of string panel extending under edges of opening all around. It's best to do this on an applique pressing sheet or piece of parchment paper to protect your ironing surface. Fuse with hot steam iron (for Wonder Under), or as directed, for another brand. Cool. Turn to wrong side and carefully trim off excess of string panel that extends beyond fused area.

On right side of block, stitch all around heart, covering raw edges of heart-shaped window with zigzag, satin stitch or other decorative stitch in matching or contrasting thread.

Finishing the Pillow:

Optional quilting: The pillow front can be embellished with a little quilting, if you wish. Baste pillow front to a square of batting the same size. Pin as needed and add machine or hand quilting as desired. I used chalk to outline a heart about 1" outside the string pieced one (avoiding the fused area), and hand-stitched it with a large running stitch through front and batting, in cream colored pearl cotton, before sewing the pillow front to the back. Even a little quilting adds substance, texture and style to the finished pillow.

Trim pillow front and back to same size, to fit your pillow form plus $\frac{1}{2}$ " seam allowances (13" square, for a 12" pillow insert). Place right sides together and sew side and top edges together, leaving bottom edge open. Turn right side out and press, folding seam allowances to inside at opening. Insert pillow, pin edges together and stitch closed by hand.