



FIESTA NEWS!

2015 Calendar

Business Meeting:

Wed, Nov. 4, 9:30 AM

General Meetings:

Tue., Nov. 10, 700 PM

Wed., Nov. 11, 9:30 AM

Submission deadline for the November Newsletter:

Wed., Nov. 18. Articles should be sent to Newsletter Editor Joey Nakagawa at

newsletter@tucsonquiltersguild.com

Quilt entry deadline:

Fri., Oct. 30 by mail

Holiday potluck party:

Tue., Dec. 8, 7:00 PM

Wed., Dec. 9, 9:30 AM



Nancy Eha "The Beading Queen"

Nancy Eha has been exploring with beads and fabric for 20+ years. She teaches internationally and is the author of 3 beading on fabric books.

You can bead like a pro, let me show you how!

Do you want to learn fabric beading techniques you can use on your projects? Have your past beading attempts resulted in outcomes that are less than wonderful? Do you find yourself frustrated using your current beads and beading supplies.

You can have fun beading with spectacular results! My secret, I break each step of beading into small manageable steps which equals success for you! Plus, I share with you my top beading secrets to make your beading time more pleasurable.

My passion for beading has led me to teaching beading internationally, teaching on line courses and writing three beading books.

Nancy's lecture is "Beyond Bling: Creating Beaded Focal Points"

2016 Quilt Fiesta! Quilt Show meetings

are at 10:00 AM at the Tucson Police Substation on the NW corner of Alvernon and 22nd Street. Everyone is welcome to attend.

November 20, 2015

December 18, 2015

January 29, 2016

2016 Calendar

Turn in quilts at meetings

Feb. 9 and 10

2016 Quilt Fiesta!

Feb. 19-21, 2016

President's Message

As November begins, I realize that the weather is starting to get cooler and I'm thankful for that. I finally have more time to quilt and straightening up the fabric piles that "seam" to be in my workroom. So I'm also thankful for my fabric stash. I'm thankful that my wonderful husband doesn't get upset when I'm happily busy sewing instead of doing housework (ugh). I'm thankful that my dogs like to help me quilt, they seem happy sleeping in the sewing room. I'm thankful that I have a home and food to eat. I'm thankful that I live in America, with all the opportunities that have helped me be the person I am today. I'm thankful that I have many friends who listen and encourage me with my quilting. I am very blessed. So whether we are "Sew Thankful" or we are so thankful for all of our blessings, let me say "Happy Thanksgiving" to all my quilting/guild friends. Take a minute or longer and count your blessings.

Roberta Sipes

Roberta will have the form below at both November meetings.

2016 PRESIDENT'S CHALLENGE

Member Name _____ Guild Membership # _____

Address _____

City, State, ZIP _____

Phone # _____ Email Address _____

Description: Please do not use more than 40 words in your description.

Your quilt will be at: Tuesday 12 January 2016 evening meeting _____

Wednesday 13 January 2016 morning meeting _____

Quilt-a-Thon

There was a **HUGE** turnout for the general meeting which was held on Wednesday, October 14, 2015. At the meeting our President, Roberta Sipes, presented 132 quilts from the August **Quilt-A-Thon** to the Diamond Children's Center. There were three representatives from the Center who spoke about the happiness these quilts would bring to the children. They also spoke about how happy the staff members are to receive these wonderful and colorful quilts. They were quite amazed that so many quilts could be made in such a short period of time.

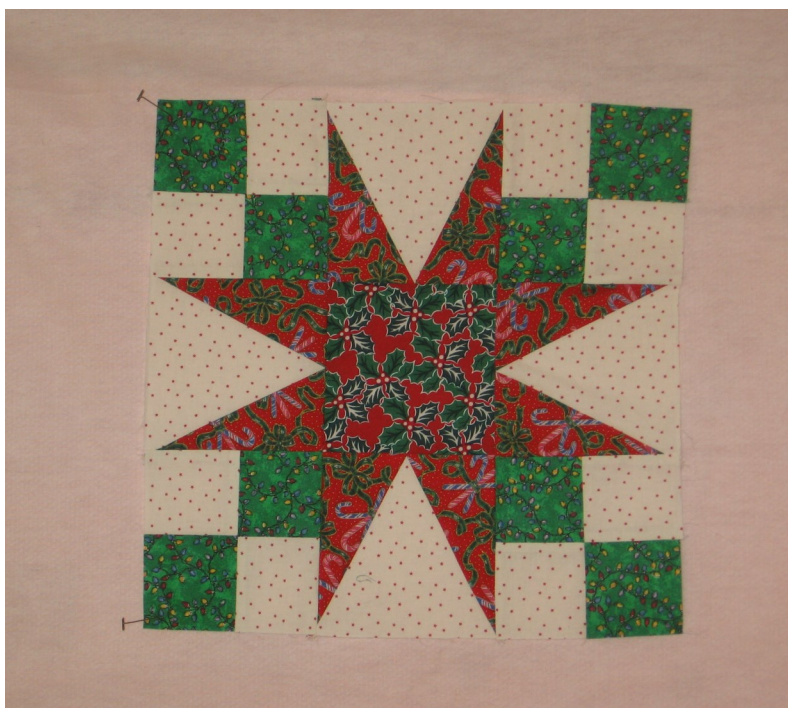
I think it made all of us happy!

The generosity of you, the Guild Members, in your donations of materials and time to make the Quilt-A-Thon project such a success is beyond amazing. On behalf of the Quilt-A-Thon Committee and me, personally, I thank each and every one of you who participated in this project.

Paulette Worman,
Committee Chairperson

Holiday Block Exchange

Ho! Ho! Hot! It's countdown time until the December meeting (s) and our Holiday Block exchange! What a great opportunity to have a block made by one of our talented members! It's not hard, it's fun and you get a piece that can be used for a pillow, in a throw, as the beginning of a small quilt (for the auction) or even framed. Don't miss this opportunity. See side panel, on the Guild website, for details.



Mary Bazzano

We learned in late September of Mary Bazzano's passing, following a brief illness. Mary was an active and vibrant member of the Guild. She was the chair of the Quilting for Others committee as well as of the Hanging committee for the Quilt Fiesta. Mary will be missed.

2016 Quilt Fiesta!

From the Quilt Fiesta Show Co-chairs

The Quilt Show Committee would like to thank everyone who generously shared their quilts by entering them in the 2016 show. All quilts are accepted, if we have more quilts than space to hang them it will be a #3 preference quilt that might not get in. If this should occur, someone from Hanging Committee will contact you. No news is good news. Our goal is to send out the instruction letters and the quilt and cloth bag/pillowcase ID labels in early January.

Designs for the 2018 Raffle Quilt are due anytime between now and December 1st. We will vote on the designs at the December 8th and 9th Holiday parties. Designs can be turned in to Betty Anderson at the November Guild meetings via Email at bettyca@comcast.net or regular mail at 3067 W Avenida Cresta, Tucson, 85745. The designs should be represented in black, white, and grey color values. Please Email or call 743-3209 (if no answer, please leave a message) if you have questions.

Joan Swanson jbswanso@gmail.com

Betty Anderson bettyca@comcast.net

Vintage Quilt Turning

We have quilts! Thanks to each of you who submitted entries for *Quilt Fiesta's* 2016 *Vintage Quilt Turning*. Once again, I'm excited at what we will share. At deadline for this article, I can't provide much information about the quilts. However, stay tuned.

We soon will be preparing narratives for the quilts. We know you'll enjoy. Also, narrators and turners are needed for the event. If interested in helping again, or if you'd like to join the fun for the first time, please notify Sue or a committee member.

Owners of the accepted quilts will be notified by email when and where to take their quilts for the 2016 *Vintage Quilt Turning*. Owners who elect to have their quilts documented also will be sent information at that time.

Please contact Sue Franklin, chair, at 520.490.4721) or suevette63@comcast.net, or committee members Judy Breneman at judyanneb@cox.net, Eileen Mechling at jemech@comcast.net, Kathie Miller at kmmiller@hotmail.com or Sheryl Verts ksherylv@yahoo.com with questions.

Featured Quilter

The Quilt Show Committee is looking for nominations for the Quilt Fiesta 2016 Featured Quilters. The members who have already been honored are Amy Bright, Susie Weaver, Nancy Arseneault, Nancy Landon, Nubin Jensen, Jean Biddick, Keith Donner, Helen Frost and George & Gloria Magee, Patty Goodsell, Kathy Zimmer and Mary Vanecke.

Please send nominations to Joline Albaugh at: joline@dbelltech.com or call or text 520-975-7021. There will also be a ballot box available the Guild meetings. Thank you for your help.

2016 Quilt Fiesta!

Judging Committee

The Judging Committee needs an organized, committed volunteer to work closely with us through the 2016 quilt show, in training to take the lead for the 2017 show. The next several months are when most of the Judging Committee's work happens, so this is the perfect time to join us! Please contact Jean Biddick (jsbiddick@gmail.com), Colleen Babcock (cjquilts@att.net) or Susan Gorder (susittka@Hotmail.com) if you would be interested or would like additional information.

We are also still looking for volunteers to help on the two judging days: Monday, Feb 15 and/or Tuesday, Feb 16. Please let one of us know if you are available to help either or both days, and if you can assist with transport and/or storage of quilts for judging.

Thank you!
Susan Gorder

Hanging Committee

We will continue to take sign-ups for Quilt Show set up at the November Guild meetings. Quilt Hanging Day is February 18, 2016 at TCC.

We also need about 20 people to help us set up on Wednesday, February 17th, at 10 AM; also at TCC.

Please see the notice in the October Newsletter for details about what we do on quilt show set up days and why your help is so important. We will not be taking sign-ups at the December meetings, but will again in January if needed. If you are returning to Tucson after the November meetings, you may email either Betty or Paulette that you would like to help and we will get you on the list.

And, if you can bring a ladder that will be a big help and much appreciated.

Thank you from the Quilt Hanging Committee:

Betty Anderson bettyca@comcast.net; Paulette Worman lavenderlady@centruylink.net Chris Nelson, Jennifer Reynolds, Dianna Weeks, Reilly Zoda

ATTENTION ALL TQG WORKSHOP ATTENDEES!

There will be a display of quilt samples from Tucson Quilters Guild workshops at the TQG Quilt Show in February 2016. I am asking for the use of any completed quilt samples from TQG workshops to display at the TQG Show.

I had quite a few people who volunteered their quilt samples from our workshops last year and I am hoping to get more this year. If you have such a quilt that you could lend me, please e-mail me at maryblount2@gmail.com. I would like to collect them at the November and January meetings. You can turn them into the current Program Chairs, Connie German and Riley Zoda, at their table. Thank you and I look forward to hearing from many of you!

Mary Blount

2016 Quilt Fiesta!

Take Down Committee

We will continue to take Sign-ups at the November Guild meetings for volunteers to help take down the 2016 Quilt Fiesta.

Take down is Sunday, February 21, 2016 beginning at 4 pm. Please see the notice in the October Newsletter for more details about what you would be doing as a Take-down volunteer. You can sign up your spouse, significant other, son, daughter or neighbor; anyone who is willing to help. And if you can bring a ladder it will be much appreciated. The more volunteers we have, the quicker everything gets put away and the sooner we can begin to return the quilts. We will not be taking sign-ups at the December meetings, but will again in January if needed.

If you are returning to Tucson after the November meetings, you may Email me that you would like to help. – bettyca@comcast.net

Thank you from the Take-Down Committee:

Betty Anderson, Karen Fisher, Gretchen Galbraith, Char Gasker, Carolyn Lytle, Kathie Miller

RAFFLE TICKETS

We are doing nicely with all the members who have picked up their RAFFLE TICKETS by now. There are still many of you who have not done so yet and your tickets are waiting for you.

Some of you have told me that you do not know anyone to sell your tickets to and already have all the quilts you need so do not want to buy the tickets for yourselves. Well, here are a few ideas for you to think about...

1. Put QUILT FOR A CAUSE ON THE TICKET STUB (if it wins, the quilt can be used in future sale or auction for their charity).
2. Write in a dear friend or relative name on the stubs for a possible future surprise gift.
3. Use tickets as tuck ins for greeting cards and stocking stuffers
4. Some of our members just pay for the tickets and throw the stubs away. (it is their way of supporting this Guild that they love, but do not want to participate in the RAFFLE).

Last year our total sales which included member sales and public sales at the show, did not reach \$5000. We have nearly 500 members now and if everyone participated in this effort our member sales alone would surpass last year's total. Remember this money goes directly into the treasury to support everything this Guild has to offer for you.

Please think of a way you can use your tickets and help to support this effort

I will be at the meetings and can be reached by phone or e-mail for tickets or money turn in. If you cannot attend meetings, I will be happy to send tickets to you.

Don't forget, we do award prizes monthly for highest total sales, and a prize at the end of the year for the most tickets sold in the entire year.

PATTY KRUSE krusequilter@yahoo.com 885-2069

2016 Quilt Fiesta!

Kids Row

Attention all Moms and Grandmothers!

It's getting closer to the deadline to enter your special child's quilt in the **Quilt Fiesta 2016! Kids' Row** is a wonderful place to show off their quilting masterpieces. Kids should be 17 or younger, all work should be done by the child with your encouragement but you may help with the quilting and binding. You may print off the entry forms on our Guild website or the forms will be available at the Guild meetings.

Please note: Each Quilt will need a 4 inch sleeve attached so we can hang the quilt. Instructions on how to make the sleeve can be found on the Guild Website. After signing on, scroll down the middle of the page until you see Quilt Show Information. Under this Header, the third line will say Quilt Sleeve Instructions. Click on this line and it will take you to the instructions and you can print out the page.

Deadline for the ENTRY FORMS is: November 11, 2015. You may mail them to Diane Bach (address on the form) or turn them in at the Guild Meetings. *Be sure and put your email address on the form as we will communicate with the entrant about important dates to remember.*

For information contact:

Diane Bach 745-6204 or Joyce Bott 349-6223

Or email: bachdiane@yahoo.com

Quilt for a Cause News

Hurry! The deadline has passed BUT we have a ***few seats left*** on our 2 QF AC Buses to ***Road to California***, January 20-23, 2016!

--If you and a friend or two want to join us on this ***FUN*** trip, this is your last chance to reserve a place! Don't miss it!

Call Terry 749-3424 or 904-0383 --NOW!

Our 2016 auction kickoff event, Quilts in the Garden, held Oct. 3, was a huge success, raising over \$7,500 for Quilt for a Cause to help in the fight against women's cancers. Thanks to the many volunteers and donors of goods and services who helped make it such a wonderful event!

Now, it's a countdown to next October 15, 2016, the date of the Live Auction at TMC! We've received 180 quilts to date, and sold 21 so far. Thank you so much, Quilters, for making and donating beautiful quilts to this cause! And we could use at least another 100 quilts, so if you are working on a quilt to donate for the auction, thank you -- and we would love to have it by next August, or sooner.

We are already displaying quilts around the community, offering them for sale at the "buy me now" price, as well as publicizing the upcoming auction, where they will be available for bidding. Please include a 3" or larger hanging sleeve. Donation forms are available on our website, QuiltForaCause.org, or at our table at Guild meetings.

More upcoming events:

Visit our QFaC booth and buy raffle quilt tickets and boutique items at the Rusty Barn Tucson Quilting, Craft and Sewing Expo November 5-7. Join us at the Pieciful Quilters Retreat Nov. 12-15 at the Radisson Suites (contact Eagle's Wings Quilting Shop for registration info); and don't miss Quilter's Market's Black Friday Sample Quilt Sale on Friday, November 27, 9:30 - 4:30; a portion of proceeds will go to benefit Quilt for a Cause!

The Tucson Quilters Guild • 38th Annual Quilt Show - Quilt Fiesta! • February 19 - 21, 2016

TUCSON QUILT FIESTA! 2016

38th Annual Quilt Show

DVD's

A DVD of all the quilts in the 2016 Quilt Fiesta! Show will be available this year for purchase. You can pre-order your copy for \$10 at the monthly guild meetings beginning in October. At the Quilt Show the DVD will then be \$12 to purchase.

The DVD consists of high resolution pictures of all the quilts in the show plus slideshows (that can be viewed from your TV or Computer) that include Vintage Bed Turning, President's Challenge, New Member Challenge, and all the children's quilts in Kids Row.

See Alice Wilder to pre-order your copy.

Tucson Quilters Guild

PROGRAM NOTES

Program Co-Chairs Connie German and Reilly Zoda encourage you to go to the Guild website under Future Speakers to see all the exciting speakers coming to our Guild until early 2016. Listed are dates that each speaker will be lecturing and teaching at the Guild along with the workshops offered and their website. Just click on the website address to look at the workshops in detail. Most websites will also have the Supply Lists needed for the class. The 1 day classes are \$50 and the 2 day classes are \$100. The classes are from 9:00 AM to 3:30 PM each day and they are held at the St. Francis Cabrini Church, 3201 E. Presidio, Tucson, AZ 85716 in the large multi-purpose room (the same location as the lectures). These workshops are a great opportunity for you to learn new quilting skills at a very reasonable price from professional quilters from all over the United States!

Upcoming Programs:

2015

November 2015 - Nancy Eha

November 10th & 11th Lecture: "The Beading Queen"

November 12th Workshop 1: "Organic Beading for Art Quilters", 7 spots open

November 13th Workshop 2: "Bead-Dazzling Embroidery Interpretations", 9 spots open

2016

January 2016 - Rose Hughes

January 12&13 Lecture: "Embellishment Scavenger Hunt"

January 14&15 2-Day Workshop: "Dreamin' Up Landscapes" 17 openings

February 2016

February 9 & 10: last minute information about the Quilt Fiesta! - February 19-21, 2016

Quilts to be turned in at meetings

March 2016 - Vikki Pignatelli

March 10&11 Lecture: "Nurture Your Creative Spirit"

March Workshops: "Basic Curves" and TBD

Sign-ups open November 2015 Business Meeting

April 2016 - Bonnie McCaffrey

April 7&8 Lecture: "Inspiration & Development of a Quilt Artist"

April 9 Workshop: "Painted Face for Beginners"

April 10 Workshop: "Doodle Zen Dot Z"

Sign-ups open November 2015 Business Meeting

May 2016 - Rita Verroca

May 12 & 13 Lecture: TBD

May 14&15 Workshop: TBD

June 2016 - Gail Garber

June 9&10 Lecture: TBD

June 11&12 Workshop: TBD

January's speaker Rose Hughes

There are only 4 people signed up for this class and if after the November meetings, we don't have at least 10, we will have to cancel her workshops.



Arizona Quilt Documentation Project – Tucson

By Sue Franklin

In October, the team documented 15 quilts from the Yuma museum, at the *Arizona History Museum*. Newest member, Sara Rumbaugh, joined us for her first "taste" of the excitement of documentation. It is called baptism under fire and I think Sara loved it.

We had two *Appliqué Sampler* quilts that appeared to be "mates" as they were so similar in style and both contained an appliquéd 1930 block. However, only one maker was identified; the other is unknown. One sampler included mostly flowers and animals while the other had people, animals, and the alphabet. Both were kit quilts as markings were spotted on each.

An unusual *7-point Star* quilt, not in good condition, was an interesting find. The hand pieced stars were back stitched with embroidery thread. My favorite quilt was a *Redwork/Irish Chain* from the first quarter of the 20th century. Most interesting, was the complete story of *Little Red Riding Hood*, in a diagonal chain of blocks. Typical for redwork of the time were the animals, people, and flowers. Hand quilted in a grid fashion.

The oldest quilt, circa 1800-49, was a *Whole Cloth* in very poor condition. How sad it didn't receive the love it deserved. The quilt, made in the Marseille style, was fringed, but some fringe hung loose. The quilt had a large hole. It was densely and exquisitely quilted in parallel lines, feathers, cables, florals, and grid diamonds. It must have been a beauty!

Others included two *Log Cabins*, one tied and heavy, from the last quarter of the 19th century and one silk, foundation pieced, and from the first quarter of the 20th century. Also, two *Double Wedding Rings*; one a very worn quilt and the other a top. The colors of the latter, circa 1930-49 were as vibrant as if made today.

The team also documented a *Dresden/Sunflower*, a *Crazy*, and a *Snowball/Nine Patch* plus our "wonkiest," a polyester quilt, from the 1970s, possibly made by a child. Comprised of "squares" and half square triangles, it was hand-made with very large and uneven stitches.

Member, Judy Breneman, contacted quilt expert, Bill Volckening, for help on identifying one block that gave the team trouble. The name, Mosaic #3...duly found in Barbara Brackman's *Encyclopedia of Pieced Patterns*! Thanks to Judy and Bill.

If you have questions about quilt documentation or would like to join the Tucson team, please either call or email Tucson liaisons Sue Franklin, (520.490.4721; suevette63@comcast.net) or Terry Gryzb-Wysocki, (520.749.9326; terry-gw@mindspring.com). New members are welcome. Also, if you'd like to just come to watch and view the process; that is possible, too. Training sessions are held monthly from 9:30 until 12:30 at the *Ellie Towne Flowing Wells Community Center* on Ruthrauff Road.



Tucson Quilters Guild and Tucson's Quilt Fiesta! is now on Facebook! Since this is FREE publicity for our Guild and our show, ask your friends to 'like' the page. What can be better than free?

<https://www.facebook.com/pages/Tucson-Quilters-Guild-Tucson-Quilt-Fiesta/121887434544473>

BEES, BEES, BEES—Updated!

CENTRAL AREA:

Himmel Park Contact: Ruth Campbell, 792-1639

Where: Himmel Park Library; When: Third Wednesdays, 6:30 PM

EAST SIDE:

Art Quilters Contact: Laura Steiniger, 465-9100

Where: Quilters Market; When: Third Wednesdays, 10 AM to Noon

Charity Bee for more information call Susan 747-8458

Where: Quilters Market

When: 2nd Tuesday of the month at 1:00 pm

Evening Eastside Bee Contact: Connie Weigel, 760-7728 or xuxala@msn.com

Where: Unity Church of Peace, 1551 S Eastside Loop

When: First Thursdays, 6:30 – 9 PM

The Evening Eastside Bee does not meet during the summer.

UFO Bee (Bring your own UnFinished Objects) Contact: Mary Meserve, marymes@aol.com

Where: Quilters Market

When: Tuesdays, 9:00 – 11:30 a.m.

Pacific Rim Quilting Bee Asian fabrics, donation quilts

Contact: Annette Meyer, shelbymeयरaz@cox.net; Susan Owara

Where: The Quilt Basket When: First Tuesdays, 10:00 a.m. – noon

East side Saguaro Needlers Bee Contact Joan Gilbert 722-3822.

Meets third Wednesday 1:00-4:00 in members homes.

GREEN VALLEY:

Hexies Bee English Paper Piecing, Contact: Carole Sullivan, 520-762-8652

Where: Friends Indeed Community Center, Green Valley, AZ

When: First Wednesdays, Noon – 3PM

North of the Border Contact: Babs Phillips, 393-6557

Where: M & I Bank, 270 W Continental, Green Valley; When: Thursdays 9:30 – Noon

NORTHWEST:

Quilting for Others Contact: Mary Meserve or Kathy Harris

Where: Cactus Quilt Shop; When: Third Wednesdays, 9:30 – Noon;

Theme: Tucson Charities

Mona Lisa Bee on the Northwest side is now open. They are looking for new members. They meet at the Foothills Community Church at 3301 Overton Road on the 2nd Mondays of the month at 9:30 a.m. Anyone who is interested can contact Claudia.

Contact: Claudia Colton [520 395-2628](tel:520-395-2628) cwcolton@comcast.net

SOUTH:

Quilts of Valor Bee Contact: Beth Glass, 241-0359

Where: Eagles Wings Quilting, 3949 E. 29th Street, Tucson, 85711

When: Third Thursdays, 1:00 – 4:00 PM

SOUTHWEST:

Southwest Side Bee All are welcome. Contact: Marie Morris, 520-403-6208 or 520-623-0123.

Fall schedule is Sept 21, 2015 to Nov 16, 2015.

Where: GracePointe Church, 2555 W. Valencia Rd., Tucson

When: Mondays, 6:30 – 8:00 p.m.

Please contact the Guild Beekeeper, Laurie Mullins at MLauriel@hotmail.com to add, change or correct information about Bees. Open Bees are listed in the newsletter. The closed Bees list is on the TQG member website.



Tucson Quilters Guild

The Guild Basics

Who:	All Members
What:	Business Meeting —First Wednesday of every month in the Church Classroom. General Meetings - Second Wednesday of the month in the morning or the Tuesday evening preceding the second Wednesday - in the Parish Hall.
When:	Business Meeting — 9:30 AM ~ 10:30 AM General Meetings: Tuesday Evening —7:00~9:30 PM Wednesday Morning —9:30 AM~12:00 PM
Where:	St Frances Cabrini Church 3201 E. Presidio Near Fort Lowell and Country Club
(How): Parking	Guild members are asked to refrain from parking in the spaces in front of the Parish office; the Church wants these spaces to remain open for Church members who have business to attend to in the office. This is the small building to the east of our meeting room. PARKING NOTICE: Tuesday evening attendees: The Church's Family Classes are in session again, so PLEASE DO NOT PARK IN THE FRONT LOT. Use the side or back lot.
Why:	Come to get involved with all aspects of the Guild, to make new friends, learn new quilting skills, share, but most of all, to have FUN . But please, do not wear fragrance to meetings .
Cost:	Members (\$30/year, due in March) and Guests (\$5.00/meeting with guest speaker)

LIBRARY INFORMATION

Tuesday Evening Meetings: Open from 5:30 PM to 7 PM only.

Wednesday Morning Meetings: Open from 8:30 AM to 9:30 AM and during the break.

To renew books:

Call Donata Pfisterer the day before the meeting at 733-9557 or email her at:

donatap@photonengr.com

Advertising

Members: \$5.00 for small want ads for Quilting/sewing related items

Quilt related businesses:

\$25 business card size

\$50 1/4 page

\$100 half page

EMAIL LIST: The Guild now has an email list for easy communication with the members. Please log into the protected area of the website and put your name and email address into the box at the top of the page. After doing this, you will receive an email. You must click on the link after making the link into one long line. If this works, you will receive another email saying you were successful. If you have any problem with this, email me at quilter@tucsonquiltersguild.com.
Meg Silvern

TQG BOARD AND COMMITTEES

President	Roberta Sipes	lsipes@power.net
Vice President	Elaine Romanelli	Romanellielaine@gmail.com
Endowment/ Donations	Sally Dickinson	749-9815
Membership	Mary Meserve	465-2785
Member at Large, Evening	Kay Hendricks	325-4509
Member at Large, Morning	Evelyn George	325-0166
Programs	Connie German	germanconnie@gmail.com
Programs	Reilly Zoda	sekmet73@cox.net
Quilt Show Co Director	Joan Swanson	jbswanso@gmail.com
Quilt Show Co Director	Betty Anderson	bettyca@comcast.net
Secretary	Barbara Heiman	bjheiman@hotmail.com
Treasurer	Kathy Barton	kathrynbarton@sbcglobal.net
Bears	Christine McCollum	748-9165
Bees	Laurie Mullins	MLauriel@hotmail.com
Corresponding Secretary	Mary Meserve	465-2785
Finance	Marie Morris	623-0123
Guild Pins	Diane Bach	bachdiane@yahoo.com
Guild Publicity	* open *	
Historian	Cathy Dargel	746-9246
Holiday Block Exchange	July Gilmartin Colleen Babcock	jgilmartin@msn.com cjquilts@att.net
Hospitality	Christine McCollum Marie Luongo	748-9165
Library	Donata Pfisterer	760-0309
Library	Kathryn Wald	749-4772
Newsletter	Joey Nakagawa	JoeyKiomi@gmail.com
Pattern of the Month	Evelyn George	quilter4ever@cox.net
Quilt A Thon	* open *	
Quilting for Others	Mary Meserve Kathy Harris	465-2785 615-0541
Raffle Quilt 2016	Terry Gallegos	749-3424
Raffle Quilt 2017	Colleen Babcock	cjquilts@att.net
Record Keeper	* open *	
Website	Meg Silvern	meg@silvern.com



Pattern of the Month

November 2015

COILED FABRIC BOWLS

By Evelyn George



SUPPLIES -

CLOTHESLINE - BRAIDED COTTON, MEDIUM, 12 LB LOAD LIMIT -

ACE hardware carries it in 100 foot and 50 foot bundles. It has a cotton outer layer with a core of soft synthetic fibers to help prevent stretching. 100 feet makes 2 or 3 medium bowls. This weight of clothesline fits under a regular zigzag foot or walking foot, and can be stitched by machine. Other cords may be too stiff and may break the needle.

FABRIC STRIPS - cut crosswise or lengthwise from fat quarters, yardage or leftover strips. Width approx. $\frac{3}{4}$ " to $1\frac{1}{4}$ ". (I like $1\frac{1}{4}$ " because the leftovers are not too small for other projects.) You can overlap strips as you add them on. Really short pieces can be sewn together first if you want, but don't make really long strips -they are harder to wrap around the cord.

Coiled Fabric Bowls, cont'd

NEEDLE - #100 jeans needle or equivalent

SAFETY PINS, SCISSORS, TAPESTRY NEEDLE (to conceal end of last strip)

THREAD -12 to 40 weight cotton or polyester on top. Heavier threads seem to help bowl hold its shape better, but bobbin refills are a nuisance, so use 50 wt. in bobbin.

STITCH -Multiple-stitch zigzag, regular zigzag, or other decorative stitch which can be set to a width of about 5, and length about 2 to 2.5. The stitch needs to go back and forth into both of the coils as you push them snugly together.

METHOD -

Begin by unrolling clothesline carefully from its bundle, while winding it into a large ball. Place the ball in a basket, and unroll gradually as you wrap and sew the coils.

Trim end of clothesline to remove fluff. Fold about 1 $\frac{1}{2}$ " of the first strip over the end, pinch closely and begin wrapping the strip over the clothesline, from right to left. Snugly overlap each wrap about $\frac{1}{2}$ " so it completely covers the clothesline. Secure temporarily with a safety pin at the beginning and wherever a new strip overlaps the last one. Wrap several feet of clothesline at a time, keeping the loose end of fabric strip unwound as you go. Alternate wrapping with sewing, a few rounds at a time.

For a round bowl, begin by folding about $\frac{1}{2}$ " of the end to the **left** (or, for an oval bowl, fold about 2-3" of the end to the **left**). Use toothpicks to push the two pieces together under the presser foot. Start sewing at the **inner fold**. Lockstitch, then sew forward, winding the coil clockwise while sewing the two coils very closely together. Keep coils flat until a big enough base has been formed. The bulk of the base must be to the **left** of the presser foot, in order to later build the sides.

When the base is big enough, begin curving up the sides by holding the base up vertically with your left hand while sewing the coils. Pull the loose cord slightly toward you with your right hand while holding the base vertically and pushing it slightly away from you with your left hand. Keep a consistent angle and pressure while you sew up the sides.

When sides are tall enough, cut cord off at an angle, wind strip to end, then cut strip leaving about 3" loose beyond end of cord. Twist the loose end, estimate where it can be concealed and use a tapestry needle to bury the end, pulling the needle completely out just before you stitch over the concealed end.

Stitch one more round completely around the bowl, to finish the top edge.