



FIESTA NEWS!

Business Meeting Saturday, June 28, 2014 9:30 AM

General Meetings Tuesday, July 8, 2014 7:00 PM

Wednesday, July 9, 2014 9:30 AM



Lynn G Kough's Viewpoint

My expertise rests in handling color and design, and especially in exploring the possibilities inherent in pieced designs – beyond how they appear in their “pure” form. I encourage originality and seeing with fresh eyes.

I also enjoy teaching fundamentals – appliqué, piecwork, and quilting. Here, patience and practice are a winning combination.

Lynn's Biography

A former high school teacher of English, Theatre, and Humanities, Lynn's life-long “affair” with fabric resulted in a career of teaching, writing about, and creating quilts of all kinds. She is the author of two books and has enjoyed teaching quiltmaking at major conventions, guilds, and shops throughout the United States and abroad for more than 20 years.

In the last ten years, Lynn has served as show coordinator and president of the Arizona Quilters Guild, president of The National Quilting Association, Inc., and NQA's annual show coordinator and currently serves on the board of the Sonoran Desert Chorale (with whom she enjoys singing in the alto section).

Lynn has authored several books and articles including *Stretching Tradition: New Images for Traditional Quilts*, *Quiltmaking for Beginners: A Stitch-by-Stitch Guide to Hand and Machine Techniques*, and “The Value of Black & White,” *American Quilter*.

Recently she has been bitten by the “bead bug” and has found creating custom jewelry most enjoyable – stitching everything by hand once again.

Lynn lives in Chandler, Arizona where she is a library volunteer delivering books to several homebound ladies – who are quilters. She shares her life with her dear, patient and supportive husband; two terrific daughters; many elderly, but adorable rescued canines; absolutely too many books and sewing machines; an inordinate amount of fabric and thread; and a vacuum cleaner on the verge of cardiac arrest!

Respond to me, sekmet73@cox.net, with a comment, question or thought, with regards to anything in the newsletter and be eligible for one of the great prizes Mary Meserve has at the meetings! You won't get rich, but there are some pretty cool things!

Five (5) winners, random selection...

President's Message

Happy July, fellow quilters!

Hopefully we'll have some monsoon relief to these triple digit days we've been having. I hope you're all enjoying the time indoors, catching up on UFOs and starting new projects. I'm really excited about some of the things I've got in the works.

I've got 7 months left as your President, a role that I've enjoyed more than I can say. I never would have thought that I could grow so much at my age; almost 70, yikes! It's been one of the most wonderful experiences of my life!

But, all good things come to an end and we need to think about our next group of officers. A few offices are coming up for election and we need a Nominating Committee Chairperson to step up and find nominees. And, we need volunteers to fill the positions.

Nominating Chair is a short term role... finding people to fill the offices that are open. You'll get a LOT of help from the current board.

To start the process, let me tell you what it's been like, being President.

When I first got in front of the mike, I was a shaky basket case! Now, not at all! Like everything else, the more it's done, the easier it is.

The job of President, in our Guild, is mostly that of a moderator; everyone else does the work! You just organize, and it's not hard.

If you have ANY interest in doing this job for the next two years, please talk to me. It's a wonderful way to get to know a lot of great people!

I'm asking the other officers/committee heads that are up for change to give descriptions of their duties, in future newsletters. Surely there are some of you who will step up when you know what you're getting into.

Meanwhile, *Keep cool!*

Reilly

Answer to member question:

Q: Why not put a note in the newsletter about not wearing fragrance to meetings. By the time it's mentioned at a meeting it's a little too late.

A: We will try to put the following into every newsletter: Please be kind to your fellow Guild members who have allergies and NOT use perfume or other items such as lotions with fragrances so we can all breathe easier.

Quilting for Others

Come and see us throughout the year; we have KITS for Quilts, Pillow Cases, Heart Pillows, and Stockings. We need the stockings back by Nov. They are for the Candle Lighters. We also have tops that need to be quilted. There still is a demand for Patriotic Quilts; a good size is 45" x 50" or 60" long.

Mary Bazzano, Quilting for Others Chair

2015 Quilt Fiesta!

Betty Hayden Award

Attention all new quilters. Are you thinking of entering a quilt in the 2015 Quilt Fiesta! Show? You could be eligible to enter your quilt for the Betty Hayden Award. To qualify you need to have started quilting after September 2011, the quilt needs to be your first quilt to ever be entered in any quilt show and the quilt needs to be made entirely by you.

Please see the entry packet for complete details or contact Alice Wilder at wilderonline@comcast.net to answer any questions.

Kids Row

Are you teaching your child to quilt? Are they taking a class at a shop? We encourage you to start thinking of having your child or grandchildren enter his/her quilt in the Quilt Fiesta 2015. We would like to see more children's quilts entered. What a thrill for them to see their own creations displayed at the quilt show—they will be so proud when they receive their ribbon! Kids should be age 17 or younger. All work on the quilts should be done by the child (adults may help with the quilting and binding). I will have entry forms at the Guild meetings, at all the local quilt shops this fall and there will be a copy on our Guild website for you to print out.

Deadline for Kids Row [entry form](#) for the show is Nov. 12, 2014. Quilts will be turned in by January, 2015.

For information contact:

Pat Morris 749-4806 or Jean Owara 298-6325

Or email: morrispc@yahoo.com

Vintage Quilt Turning

Guild members, please continue to search...grandmother's attic, your quilt stash, or favorite antique haunts for treasures for *Quilt Fiesta*, 2015. A humble scrap bed covering or a sophisticated Baltimore Beauty...or something in between is perfect for the quilt turning.

A quilt turning provides the audience an exceptional opportunity to view disparate vintage quilts for similarities and differences. We'll showcase both utility quilts and "best" quilts, that *Guild* members and their families enjoy. Entries may be received at any time.

Also, some of you have indicated that you would like to help with the coming quilt turning. If others are interested, please let me know. You will be contacted. Thanks for considering.

Meanwhile, enjoy discovering what lurks in attics, antique shops, estate and garage sales. Applications to submit your special quilt(s) for the **2015 Quilt Fiesta Vintage Quilt Turning** are available on the web.

Please contact Sue Franklin at 520.490.4721 or by email at (suevette63@comcast.net) with questions. Thank you!

2015 Quilt Fiesta!

Small Quilt Auction News

We hope you're busily thinking of ideas and putting them into action for your donation to the SQA. We also hope you're encouraging your friends to do the same.

Quilts may be turned at any 2014 guild meetings with the deadline being the November 12, 2014 general meeting, or postmarked by November 12 if you are unable to attend. Quilt size should be no bigger than 80 inches around the perimeter and each quilt needs to have a hanging sleeve across the top of the quilt. Entry forms are available on the website. All quilts need to have the entry form completed and attached with a straight pin when turned in.

Give your quilts to the SQA chair or, if unavailable, to a Quilt Show chair.
Barbara Heiman, Small Quilt Auction Chairperson

Take Down Committee

Take-Down Chair, Paulette Claver, is looking for an assistant who will assume the chair position next year. The sooner someone comes on board, the more time she can share with you in the planning process.

Contact Paulette at jpclaver@comcast.net or (520) 579-1726.
Thanks for serving TQG,
Paulette

Raffle Tickets

Raffle ticket packets are ready for members to pick up at the monthly Guild meetings. Look for our table at the back of the room.

Please take a minute to think about when and where you can sell your tickets. Are you on a bowling league? Do you sing in the church choir? Do you belong to a book club, needlework group, work in an office, go to a gym for exercise? These are just a few examples of places you might show the picture of the quilt and sell a few tickets.

This year we will be giving prizes for the most tickets sold by a member each month, as well as the end of year prizes for total sales. The money from raffle ticket sales goes to support all that you love about the Guild. Thank you.
Patty Kruse, Raffle Ticket Chair.



Arizona Quilt Documentation Project – Tucson

The Tucson team welcomes new members, Rachel Lyman and Lynne Daniels. We are delighted to have them! At June's training session, six team members documented six of their quilts. The quilts ranged from relatively newly made, such as a "Navajo Mother and Child", a hand quilted "Sampler" lap quilt, a Lone Star "first" quilt that took years for completion, "Remembering Lincoln"...a quilt made in the same calendar year, and two vintage quilts from the first third of the 20th century, "Single Tulip," and a family utility quilt. Two of the documented quilts earned 3rd place ribbons at past *Quilt Fiestas*.

The Tucson team continues to welcome and would love to add even more new members. Each of us learn something new and exciting every time we meet. If you are interested or have any questions, please call or email Tucson liaisons Sue Franklin, (520.490.4721; suevette63@comcast.net) or Terry Gryzb-Wysocki, (520.749.9326; terry-gw@mindspring.com). Training sessions are held on the **first Wednesday of each month**, from 9:30 until 12:30 at the Ellie Towne Flowing Wells Community Center on Ruthruff Road. Each session includes both continuing education and quilt documentation.

For sale, \$35, Cheryl Ann's Portable Design Wall: 72" wide and 68" long, like new. Current pricing, just under \$125. Please either call Sue Franklin at 520.490.4721 or email, suevette63@comcast.net. Thanks!

FOR SALE – Bernina 830 LE Sewing Machine with Embroidery Module, \$7,750

Bought new in June 2012 for \$12,000, many extras including plexiglass extension table, travel cases for both machine and embroidery module, many extra feet, several programs, cut-work tool, jumbo hoop, circular embroidery attachment and extra bobbins. All in like new condition. Selling due to complications with Parkinson's.

Contact Debbie Land at 886-9166 or 404-6179.

Advertising

Members: \$5.00 for small want ads for Quilting/sewing related items
 Quilt related businesses:
 \$25 business card size
 \$50 1/4 page
 \$100 half page



The submission deadline for articles for the July Newsletter is
 Wednesday, July 16, 2014.
 Articles should be sent to:

newsletter@tucsonquiltersguild.com
 Newsletter Editor: Joey Nakagawa

Tucson Quilters Guild

PROGRAM NOTES

Program Co-Chairs are Connie German and Janet Rupp. We encourage you to go to the website under Future Speakers to see all the exciting speakers coming to our Guild for the remainder of 2014 and for 2015. There is information on the dates that each speaker will be lecturing and teaching at the Guild along with the workshops offered. Each speaker's website is listed. You can just click on the website address and it will take you directly to their website where you can look at the workshops in detail. Most websites will also have the Supply Lists needed for the class. The 1 day classes are \$50 and the 2 day classes are \$100. The classes are from 9:00 AM to 3:30 PM each day and they are held at the St. Francis Cabrini Church, 3201 E. Presidio, Tucson, AZ 85716 in the large multi-purpose room (the same location as the lectures). These workshops are a great opportunity for you to learn new quilting skills at a very reasonable price from professional quilters from all over the United States!

Upcoming Programs:

September: [Cathy Geier](#)

September 9th & 10th Lecture - "Trunk Show"

September 11 Workshop - "Landscape Quilts Made Easy"

September 12 Workshop - "Forest Scenes"

Signups open at the April 2014 Business Meeting

October: [Carol Ann Vaughn](#)

October 7th & 8th Lecture - "How Did I Get Here From There?"

October 9 Workshop - "Stupendous Stitching"

October 10 Workshop - "Stitch and Slash"

Signups open at the May 2014 Business Meeting

November: [Rena Allen](#)

November 11th & 12th Lecture - "Skillbuilder Trunk Show"

November 13 Workshop - "Quilting Feathers Skillbuilder"

November 14 Workshop - "Quilting Design Skillbuilder"

Signups open at the June 2014 Business Meeting

Quilt for a Cause News

We are pleased to announce that in June, Quilt for a Cause donated \$10,000 to St. Elizabeth's Health Center and \$10,000 to Tucson Medical Center Foundation, to support their programs helping patients with breast and gynecological cancers. We couldn't have done this without you, Tucson Quilters Guild! We are so grateful for your ongoing support of QFAC's auctions, bus trips, raffle quilts, and pattern sales! In the past 11 years, Quilt for a Cause, Inc., a 501c3 non-profit founded in Tucson, has raised over \$750,000 primarily through the auction and sale of quilts; 99% of these proceeds have been donated to Tucson-area organizations helping patients with breast and gynecological cancers.

We are also excited to begin planning our next big quilt auction, for the Fall of 2016! Even though that's over two years away, we hope you'll start thinking about making a beautiful quilt to donate. We'll be planning other fund-raising events and opportunities as well--so watch our website (quiltforacause.org) or follow us on Facebook for new information as it becomes available.

Thanks, Quilters! We ARE making a difference in the fight against cancer!

Tucson Quilters Guild

The Guild Basics

Who:	All Members
What:	Business Meeting —First Wednesday of every month in the Church Classroom. No Wednesday meeting in June, replaced by Saturday May 31 and June 28. General Meetings - Second Wednesday of the month in the morning or the Tuesday evening preceding the second Wednesday - in the Parish Hall.
When:	Business Meeting — 9:30 AM ~ 10:30 AM General Meetings: Tuesday Evening—7:00~9:30 PM Wednesday—9:30 AM~12:00 PM
Where:	St Frances Cabrini Church 3201 E. Presidio Near Fort Lowell and Country Club
(How): Parking	Guild members are asked to refrain from parking in the spaces in front of the Parish office; the Church wants these spaces to remain open for Church members who have business to attend to in the office. This is the small building to the east of our meeting room. PARKING NOTICE: Tuesday evening attendees: The Church's Family Classes are in session again, so PLEASE DO NOT PARK IN THE FRONT LOT. Use the side or back lot.
Why:	Come to get involved with all aspects of the Guild, to make new friends, learn new quilting skills, share, but most of all, to have FUN . But please, do not wear fragrance to meetings.
Cost:	Members (\$30/year, due in March) and Guests (\$5.00/meeting with guest speaker)

Quilt Fiesta! Quilt Show meetings are at 10 AM at the Tucson Police Substation at 22nd and Alvernon, NW corner. The upcoming date is June 27th. There is no meeting in July. Everyone is welcome to attend.

Business meeting...

The board and committee heads decided to change the time of the business meeting to the last Saturday of the month, for a two month trial upon the request of some members. At the end of the trial, it will come up for discussion again and will be re-voted on. If you want these meetings to continue to be held on Saturday, make sure to attend these trial meetings; otherwise they will revert to the Wednesday morning times.

The date of the next business meeting will be:

Saturday, June 28, 2014, 9:30 AM (For July Guild Meeting)

Reilly

EMAIL LIST: The Guild now has an email list for easy communication with the members. Please log into the protected area of the website and put your name and email address into the box at the top of the page. After doing this, you will receive an email. You must click on the link after making the link into one long line. If this works, you will receive another email saying you were successful. If you have any problem with this, email me at quilter@tucsonquiltersguild.com. Meg Silvern

BEES, BEES, BEES—Updated!

CENTRAL AREA:

Art Quilters Contact: Laura Steiniger, 465-9100

Where: Quilters Market; When: Third Wednesdays, 10 AM to Noon

Himmel Park Contact: Ruth Campbell, 792-1639

Where: Himmel Park Library; When: Third Wednesdays, 6:30 PM



EAST SIDE:

Evening Eastside Bee Contact: Connie Weigel, 760-7728 or xuxala@msn.com

Where: Unity Church of Peace, 1551 S Eastside Loop

When: First Thursdays, 6:30 – 9 PM

The Evening Eastside Bee does not meet during the summer.

GREEN VALLEY:

Hexies Bee English Paper Piecing, Contact: Carole Sullivan, 520-762-8652

Where: Friends Indeed Community Center, Green Valley, AZ

When: First Wednesdays, Noon – 3PM

North of the Border Contact: Babs Phillips, 393-6557

Where: M & I Bank, 270 W Continental, Green Valley; When: Thursdays 9:30 – Noon

This Bee accepts only members who are also members of Tucson Quilters Guild.

NORTHWEST:

Quilting for Others Contact: Mary Bazzano, 297-9576

Where: Cactus Quilt Shop; When: Third Wednesdays, 9:30 – Noon; Theme: Tucson Charities

SOUTH:

Quilts of Valor Bee Contact: Beth Glass, 241-0359

Where: Eagles Wings Quilting, 3949 E. 29th Street, Tucson, 85711

When: Third Thursdays, 1:00 – 4:00 PM

SOUTHWEST:

Southwest Side Bee This bee meets for a spring and fall semester each year and creates quilts for the community. All are welcome. The spring semester is over for this year. The fall semester will begin in September.

Contact: Marie Morris, 520-403-6208 or 520-623-0123 Where: Grace Pointe Church, 2555 W Valencia Rd., Tucson.

Tucson Quilters Guild is always looking to update information about the bees in which our members participate. Please contact the Guild Beekeeper, Ruth Martin at saguaroquilter@gmail.com to add, change or correct information about Bees. Open Bees are listed in the newsletter. The closed Bees list is on the TQG member website.

LIBRARY INFORMATION

Tuesday Evening Meetings:

Open from 5:30 PM to 7 PM only.

Wednesday Morning Meetings:

Open from 8:30 AM to 9:30 AM and during the break.

To renew books: Call Donata Pfisterer the day before the meeting at 733-9557 or email her at:

donatap@photonengr.com

New Quilts of Valor Bee

The new Quilts of Valor Bee will hold its first meeting on **July 17th** at Eagles Wings Quilting located at 3949 E. 29th Street, Tucson, 1:00 – 4:00 p.m. Quilts of Valor is a not-for-profit foundation whose mission “is to cover service members and veterans touched by war with comforting and healing Quilts of Valor”. Beth Glass is the contact for this new Tucson Bee. Call her at 241-0359 for more information. This is an open bee. All are welcome. For further information regarding the Quilts of Valor Foundation, check the website: www.govf.org/

TQG BOARD AND COMMITTEES

President	Reilly Zoda	sekmet73@cox.net
Vice President	Sally Dickinson	749-9815
Endowment/ Donations	Marie Morris	623-0123
Membership	Mary Meserve	465-2785
Member at Large, Evening	Kathy Harris	370-4323
Member at Large, Morning	Roberta Sipes	lsipes@power.net
Programs	Connie German	germanconnie@gmail.com
Programs	Janet Rupp	tdrupp@earthlink.com
Quilt Show Co Director	David Kuskulis	349-7623
Quilt Show Co Director	Joan Swanson	jbswanso@gmail.com
Secretary	Barbara Heiman	bjheiman@hotmail.com
Treasurer	Kathy Barton	kathrynbarton@sbglobal.net
Bears	Christine McCollum	748-9165
Bees	Ruth Martin	saguaroquilter@gmail.com
Corresponding Secretary	Mary Meserve	465-2785
Finance	Marie Morris	623-0123
Guild Pins	Colleen Babcock	ciquilts@att.net
Guild Pins	Joan Swanson	297-8433
Historian	Cathy Dargel	746-9246
Holiday Block Exchange	July Gilmartin Pat Nelson	jgilmartin@msn.com pnelsor6@msn.com
Hospitality	Christine McCollum Marie Luongo	748-9165
Library	Donata Pfisterer	760-0309
Library	Kathryn Wald	749-4772
Newsletter	Joey Nakagawa	665-9674
NQA	Kathy Harris	370-4323
Pattern of the Month	Evelyn George	325-0166
Quilt A Thon	Paula Zidel	quilter4love@hotmail.com
Quilting for Others	Mary Bazzano	297-9576
Raffle Quilt 2015	Karen Fisher	572-8825
Raffle Quilt 2016	Terry Gallegos	749-3424
Website	Meg Silvern	meg@silvern.com



Pattern of the Month - July 2014

By Evelyn George

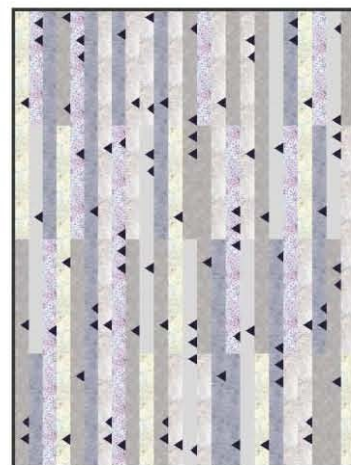
Jelly Roll 104, 105 and 106

We had so much fun last month, we're continuing the jelly roll theme this month! (Jelly Roll 104 is a variation of the basic "jelly roll race" technique; in case you missed it, go back to the June pattern for the method.) *I forgot to mention one thing, though, in last month's "jelly roll race" directions, so I'll add it now: whenever you double your long end-to-end strip, you need to cut it on the fold each time you get to the end.*

I've been seeing some terrific jelly roll quilt ideas on Pinterest, Flickr and so on, but the images are copyrighted, so you'll just have to go there and look for yourself. I'll try to draw a few of my ideas for you, too!

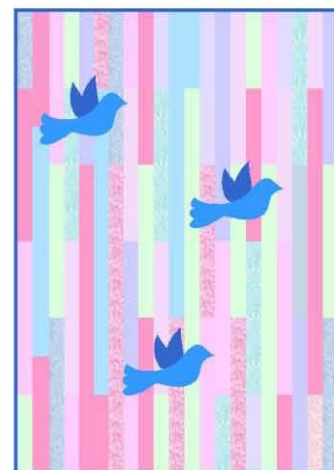
Jelly Roll 104 (Embellishments)

As you "race" along, insert Prairie Points! Make them in the usual way (or maybe you have some left over?) Or make easy "faux prairie points" from $2\frac{1}{2}$ " to 3" squares, as follows: sew each pair of squares right sides together using $\frac{1}{4}$ " seam allowance, all the way around; cut in half diagonally to make two triangles, turn right side out and press. Take a pile of these to the machine and insert them randomly in the seams as you sew your strips together. If you have used two squares of the same color, that color will be showing whichever way the quilt seams end up being pressed; if the two sides are different colors, it will be a surprise which color ends up on top, so vary them as you go along. (In case a prairie point ends up on a fold, just take it out, and re-stitch that little section of the seam.)



Rickrack? Why not? If you're adding a border on one side to make the quilt bigger, insert large rickrack in the seam. Piping, lace or a ruffle could be used instead of rickrack. Choose a trim to complement the overall look, and how the quilt will be used.

It's simple to dress up a plain jelly roll stripped top with Appliques. To make the appliques, start with fabric that has paper-backed fusible ironed to the wrong side. Cut out cute shapes (flower, kitty, heart, star, etc.). Remove paper, position as desired, fuse to the quilt top and zigzag or topstitch around the shapes so they will stay on through laundering. A message or child's name can be added in the same way; keep in mind that letters may need to be traced in mirror image, for some fusible techniques; consult manufacturer's directions for details.



--Besides the "race approach, here are some other ideas:

105 (The Strip and Slash Approach) The two quilts below finish approximately 48" x 60" ; each uses about 44 strips total, including 6 strips for binding.

Start by sewing 30 assorted $2\frac{1}{2}$ " x WOF strips together side by side to make a large pieced panel, about 40" x 60." Trim edges, removing selvages and uneven ends.

Cut off two $4\frac{1}{2}$ " wide sections from one of the long sides; these will become borders.

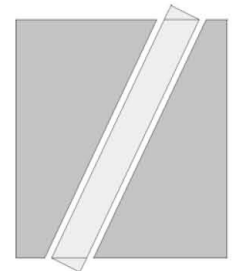
Between quilt and border, insert long double rows (pieced from about 8 WOF strips cut into 8" to 10" pieces, then reassembled in a scrappy manner, offsetting the seams) as shown. →



(another idea)↑

You could add more rows (or wider ones) to make the quilt wider.

Or, for a modern look, slash the panel *diagonally* and insert a pieced row or plain strip, trimming off the angled ends even with the edge of the quilt. →



106 (The Block Approach)

Many traditional styles of quilts are made with blocks cut from simple strip sets, such as rail fence, basket weave, stacked coins. Utilize a scrappy collection of $2\frac{1}{2}$ " x WOF strips to make strip sets. Use anywhere from 2 to 7 strips per set, then cut into square or rectangular blocks. Here's how many *square* blocks you can get from a strip set that has at least 41" usable WOF:

Strip set made with 2 strips yields 9		$4\frac{1}{2}$ " squares
"	"	3 strips yields 6 $6\frac{1}{2}$ " squares
"	"	4 strips yields 4 $8\frac{1}{2}$ " squares (maybe 5)
"	"	5 strips yields 3 $10\frac{1}{2}$ " squares (maybe 4)
"	"	6 strips yields 3 $12\frac{1}{2}$ " squares



Strippy blocks can be used to make arrangements such as rail fences; → any size block can be arranged in rows, rotating as desired, using as many as needed to make the quilt as long and wide as you want.

For another variation, try cutting the strippy blocks in half diagonally and reassembling them in a scrappy fashion. →

--Whatever ideas *you* come up with, have fun stripping!



EAGLES WINGS QUILTING



3949 E. 29th Tucson, AZ
www.azvacandsew.com
www.eagleswingsquilting.com
520-790-7041



Eagles Wings Quilting

Christmas in JULY! 18-19, 2014

What fun this is going to be!
Christmas items galore to inspire you to start on your presents...

All New Christmas Fabrics

Sewing Machine Layaway

Come in and test drive your "dream" sewing machine -
then have your significant other "Lay it Away"

Authorized Janome, Elna & Necchi dealer



Make Eagles Wings Quilting your 1-stop Quilt Shop.

Sewing/Embroidery Machines & Accessories—Vacuum Cleaners—Fabric
Notions—Classes—Open Sewing—Long Arm Quilting

Service—We work on all brands of sewing machines and vacuum cleaners!
We will provide space for your group to meet, sew and share. Call and see
what times are available.