



FIESTA NEWS!

Business Meeting *Wednesday, June 5, 2013 9:30 AM*

General Meetings *Tuesday, June 11, 2013 7:00 PM*

Wednesday, June 12, 2013 9:30 AM



Lynn Kough To Visit Us Twice in Next 6 Months

By the time Lynn Kough arrived in Arizona in 1996 she was already well known in the quilting world as an author of 2 books, a teacher, and a lecturer. Even though she chose to live in the Phoenix area rather than Tucson, we shouldn't hold that against her because her volunteer efforts and involvement in the quilting community across the state have landed her a well-earned spot in the Arizona Quilter's Hall of Fame.

A former high school teacher, Lynn's life-long "affair" with fabric has continued for over 40 years. She has served on the Board of Directors for NQA including a term as their President. Again, she volunteered and served on the Board of Directors for the Arizona Quilters Guild including a term as their President. Apparently "no" is just not a word that exists in her vocabulary. Today she has joined the circuit as a professional quilt judge and will be one of the judges at our own quilt show in January of 2014.

Lynn's expertise rests in handling color and design, especially exploring the possibilities inherent in pieced designs, which she will showcase in both of her workshops – "Color Weave" and "Adventures in Black and White". She says "sharing her love of fabric and color is a great joy and the opportunity to do so with quilters everywhere is a delight. There is no greater pleasure for a teacher than to see students discovering their potential while having a good time!"

Outside of quilting, Lynn also volunteers for the library, delivering books to several homebound ladies (who just happen to be quilters also). She shares her life with her dear, patient and supportive husband, two terrific daughters, many adorable elderly rescued canines, absolutely too many books and sewing machines, an inordinate amount of fabric and thread, and a vacuum cleaner on the verge of cardiac arrest!

kough.us

President's Message

Happy summer, fellow Guild members! Well, the dreaded 'triple digits' have finally arrived! As I write, it's 100 in the shade on my back Ramada at 4 PM. To those of you that have headed off to cooler climes... safe travels and good times this summer! Let's see the pictures!

For those of us that will be staying through the "...but it's a dry heat..." time, we'll be looking for things to do that'll help to keep us cool!

Hmm... let's see...

Take a class! We really need sign-ups for our June workshops. Please Google Lynne G. Kough and check out what she has to teach us. I was pretty impressed and I have it on good authority that it will be a real loss if we have to cancel her classes... honestly!

Our local shops also offer great classes, taught in comfortable environs that give us a chance to increase our skills. Myself, I plan on working on my machine quilting skills... like getting some!

July's program sounds intriguing to me. I really admire Kathy Barton and Mary Blount, Programs co-chairs, for their creative 'thinking outside the box'; bringing us something that is both interesting and educational... opening our creative potential.

If you've never been to the August Bee... you're in for a treat! It's great fun and camaraderie, from Tuesday night through Wednesday afternoon. Come for any or all of it and I guarantee you'll want to do it again next year! It's a wonderful sense of accomplishment to be a part of getting more than 100 quilts out into the community where they're needed.

Who wants to be on the Nominating Committee? Summer is a great time to pull this together. (New members NEED apply!) Off the top of my head, Treasurer, Secretary and Programs will need new chairs. There are others also. Please let me know if you'd be interested in the nominating process and we can figure out how to proceed. (This is a job that someone who is still working, i.e., not retired, could probably fit into their schedule...)

Is designing part of your life? You don't have to be in town to come up with a new Guild pin design; or a quilt design for the 2016 Quilt Fiesta raffle quilt. This guild is SO full of talent! Let's see some of it step up!

One thing I want to shout out! YOU'RE NEVER ALONE should you want to step up and do something more! Let me know what you'd like to do and I'll direct you to the people that will be more than happy to help you. I've never been involved with a group of people that are more welcoming and helpful to those that want to become involved.

That said, those of you who don't want to get involved with the process, but just want to do the work; your own quilts, quilts for others, teddy bears... etc. etc. etc... always know that you're the lifeblood of a group like ours and we appreciate each and every one of you! In a group our size, there is a comfortable spot on the couch for everyone!

I hope you all have a wonderful summer, whether you're here or off on vacation!

Keep in touch!
Reilly

Tucson Quilters Guild

PRESIDENT'S CHALLENGE

The challenge this year will be: **IDIOMATIC EXPRESSIONS!**

Sally came up with the idea and after some thought I fell in love with it. We'll have some lists of expressions available at the meetings or you can look them up on-line. Pick one and translate it into a quilted graphic representation.

There's been some question about the size of the President's Challenge Quilt. The total size is 96 inches around the perimeter. Any configuration that works like: 12" x 18" x 30" x 36" anyone???

Have fun! I can't wait to see what y'all come up with!
Reilly

Check out this website: <http://www.idiomsite.com/>

The last straw ♥ Turn a blind eye ♥ Wag the dog ♥ You are what you eat
Scot-free ♥ Rome was not built in one day ♥ Out of the blue

If you need to email me, the newsletter editor - Margaret Newman - be sure to use "newsletter@tucsonquiltguild.com" or my personal email of "maggie.newman@gmail.com." I have trouble with my AOL email address, so I'm trying to not use it as much. Thank you for your attention.

Arizona Quilters' Hall of Fame - Arizona Quilt Documentation Project – Tucson

Cathy Washburn, Carole Collins, Kate Clark, and Bea Kabler are the newest members of the greater Tucson documentation group. The third training/documentation session, held May 14th, included training members that hadn't received it previously. The group also documented three quilts.

The next training/documentation will be June 4th. For information about quilt documentation or if you're interested in joining the team, please contact Sue Franklin at 825.3962; suevette63@comcast.net.

The group's first **public documentation is scheduled for June 8th between 10 am and 3 pm** at the *Arizona History Museum*. Call or email Terry Gryzb-Wysocki at 749-9326; terry-gw@mindspring.com to reserve a space for your quilt(s) documentation.

Quilt Fiesta! 2014

Bed Turning: The hunt continues...for treasured quilts, whether from your family or a favorite antique shop. Please take time to review your vintage quilts in anticipation of **Quilt Fiesta's 2014 Bed Turning**. Also, I've received names of persons who may like to help with bed turning. You will be contacted. Thanks for the interest.

Meanwhile, have fun seeing what lurks in attics, antique shops, estate and garage sales. Applications to submit your special quilt(s) for the **2014 Quilt Fiesta Bed Turning** are available on the web. Please contact Sue Franklin at 520.825.3962 or 520.490.4721 (cell) or by email at (suevette63@comcast.net) with questions. Thank you!

Judging: Our judges for the 2014 Quilt Fiesta will be Sherri Driver and Lynn Kough. They have judged for us in the past and are excellent. Judging will be held at the Jewish Community Center again this year. If you would like to help us on judging days, please let us know by e-mail or phone. You do not have to work both days, but would be nice if you can. Please look at the entry form, as it has been revised. If you have any questions give us a call.

Kathy Zimmer

kapplique@aol.com

271-1068

Ruth Martin

martin46@gmail.com

682-3846

Quilt Show Chairpersons: Featured Guild Member: We will again be inviting three guild members to display their work during Quilt Fiesta and need your help in choosing these members. Nominations can be sent to Mary Meserve.

2016 Raffle Quilt: We are asking for original designs for the 2016 raffle quilt. Designs are due to Jean, Dave or Reilly by the November meeting. Members will vote on the submitted designs at the December general meeting.

Small Quilt Auction: Have you started your small quilt for the 2014 auction? Deadline is November, 2013. See May newsletter for more details or contact Barbara Heiman (bjheiman@hotmail.com).



Challenge for Past Presidents: As part of the Hanging Committee I would like to see some quilts from Past Presidents from the blocks that the Guild gave you. Let's see how many quilts we can hang in 2014 from Past Presidents.

Mary Bazzano
Hanging Committee

Quilt Fiesta! 2014

Kid's Row: Are you teaching your child to quilt? Are they taking classes at a shop? We encourage you to start thinking of having your child or grandchildren enter his/her quilt in the Quilt Fiesta 2014. We would like to see more children's quilts entered. What a thrill for them to see their own creations displayed at the quilt show – they will be so proud when they receive their ribbon! Kids should be age 17 or younger. All work on the quilts should be done by the child (adults may help with the quilting and binding). I will have entry forms at the guild meetings, at all of the local quilt shops this fall and there is a copy on our guild website for you to print out. Deadline for Kids Row entry form for the show is Nov 13, 2013. Quilts will be turned in by January 8, 2014.

For information contact:

Pat Morris 749-4806 or Jean Owara 298-6325

Or email: morrispc@yahoo.com

Raffle Quilt: Hi members, as a lot of you know, the Raffle Tickets were available at the May monthly meetings. We had a lot of members pick up their packets and several of these members have asked for several packs to sell to friends and family.

Think about how many people you see every week. Do you belong to a bowling league, sewing or craft group, book club, or a bible study group? Do you walk with friends at the park, malls, or some of our many trails around the city? Do you play bunco, bridge, canasta, dominos, or mahjongg? Do you sing in the church choir? Do you ever just get together with friends for lunch, dinner or go to the movies? Each of these activities afford you contact with people who just might want a chance to win this beautiful quilt.

Raffle Tickets are always available at the monthly meetings; however, you may request your packet(s) at any time from me at my home phone 885-2069, or by email krusequilter@yahoo.com.

I will be happy to send as many tickets as you would like at any time.

Thank you! Patty Kruse

RIBBONS, RIBBONS, RIBBONS: If you need any ribbons for the January 2014 Quilt Fiesta! show, now is the time to let us know... It is much earlier than usual to make choices, but we are ordering ribbons in August/September to avoid last minute rushes and disappointments. If your committee needs to reward quilt makers with ribbons, please email your order as soon as possible to Phyllis Schaefer at phyllisgangeschaefer@gmail.com, or Alice Wilder at wilderonline@comcast.net

Entry forms and Quilt Show packets are available on the website in the protected area. Please note the major changes in the quilt categories and description on page 4 of the packet. Print as many copies of the packet and entry forms as you need. If you are unable to print from the website, email or phone me and I will print a copy and have it available at the next guild meeting, or bring a #10 envelope (4" x 9-1/2") self-addressed stamped envelope (at least 2 stamps) and a packet and entry form will be mailed to you. Ginny Dove 887-9284 or gdovecat@aol.com

GUILD NEWS, NEWS, NEWS

LIBRARY INFORMATION

Tuesday Evening Meetings: Open from 5:30pm to 7pm only.

Wednesday Morning Meetings: Open from 8:30am to 9:30am and during the break.

To renew books: Call Donata Pfisterer the day before the meeting at 733-9557 or email her at: donatap@photonengr.com.

The submission deadline
for articles for the
July Newsletter is
Wednesday, June 19, 2013.

Articles should be sent to :
newsletter@tucsonquiltersguild.com
Newsletter Editor is Margaret Newman



We are sad to announce that Esther Ames' mother passed away at home on May 15th. Esther says, "We greatly appreciated the assistance of EverCare Hospice for the past 11 months." Hugs to Esther!

Have you heard about this? **European Patchwork Meeting**

Some people say that the European Patchwork Meeting was first born in 1993. That year, the French Association of Anabaptist and Menonite History celebrated in Ste Marie-aux-Mines, the 300th anniversary of the birth of the Amish Movement.

The real discovery came with 18 tv channels from all over the globe, covered the event and brought in some 5,000 visitors. They were fascinated and delighted by the quilts showed by the Swiss collector Jacques Legeret.

So the idea was born to organize and have an annual event. In 10 years, this patchwork and textile art event has become a reference all around Europe, attracting more visitors from all around the world. In the beginning, the aim of the organizers was to develop a concept enabling amateurs to discover all the different aspects of patchwork and quilting.

<http://www.patchwork-europe.com/>

BEES, BEES, BEES—Updated!

NEW MEMBER BEE

Contact: Mary Meserve, 520-465-3785
Monday, 4/29/13 @ The Quilters Market
Thursday, 5/16/13 @ Cactus Quilt Shop

CENTRAL AREA:

Art Quilters Contact: Barbara Hall, 622-9268,
or rbarber21@cox.net

Where: Bella Quiltworks;

When: Third Wednesday at 10 AM

Himmel Park Contact: Ruth Campbell, 792-1639

Where: Himmel Park Library,

When: Third Wednesday at 6 PM

EAST SIDE:

Evening Eastside Bee Contact: Connie Weigel, 760-7728
or xuxala@msn.com

Where: Unity Church of Peace, 1551 S Eastside Loop

When: First Thursday of the month 6:30-9PM

Siesta Bee Contact: Nelle Starr, 886-4123

Where: Members' homes (Northeast) call for directions

When: 3rd Tuesday of the month 1pm

GREEN VALLEY:

Hexies Bee - English Paper Piecing

Contact: Carole Sullivan, 520-762-8652

Where: Friends Indeed Community Center, Green Valley, AZ.

When: First Wednesday of each month, noon-3:00pm.

North of the Border Contact: Babs Phillips, 393-6557

Where: M & I Bank 270 W. Continental Green Valley,

When: Thursday 9:30 - Noon

NORTHWEST:

Quilting for Others Contact: Mary Bazzano, 295-9576

Where: Cactus Quilt Shop,

When: Third Wednesday, 9:30 – Noon

Theme: Tucson Charities

Material Girls Contact: Caroline Schau, 297-9965,

CarolineSchau@comcast.net

Where: Rotate Homes

When: First and Third Thursdays at 1 PM

Quilting After Dark: Call Karen Fisher at 572-8825 or email her at karen@karenfisherartquilts.com to get more details.



Advertising in the Newsletter

Members: \$5.00 for small want ads
for Quilting/sewing related items.
Quilt related businesses: \$25
business card size \$50 1/4 page,
\$100 half page.

Questions? Email the newsletter
editor at:

newsletter@tucsonquiltersguild.com

Tucson Quilters Guild

About TQG Bees: Eastside Quilt Bee

The Eastside Quilt Bee meets on the first Thursday of every month at the Unity Church of Peace which is located at 1551 S. Eastside Loop, Tucson, AZ 85710. Meetings begin at 6:30 p.m. Connie Weigel is the bee facilitator. The Eastside Bee has made two quilts (both paper pieced) for charity since the Bee began in 2010. The Hearts quilt was given to the Linus Project and Hugs and Kisses was presented to a 7-year old cancer victim known to a member of the Bee. The Bee members are always interested in learning about new products and new techniques and would welcome any Guild member's program or methods sharing at a Bee meeting. Connie, Gretchen, Arlene, Roberta, Irma, Susan, Rhonda and Vickie are always interested in adding new members to the Bee. If an evening bee on Tucson's eastside fits your needs or if you have a program to share, contact Connie Weigel at 760-7728 or email, xuxala@msn.com

Heart Quilt



Hugs & Kisses Quilt



Quilting for Others: Don't forget QFO is still looking for patriotic quilts for TMC. I would like about 6 to give them by September. Right now, I only have 2.

Thanks,
Mary Bazzano

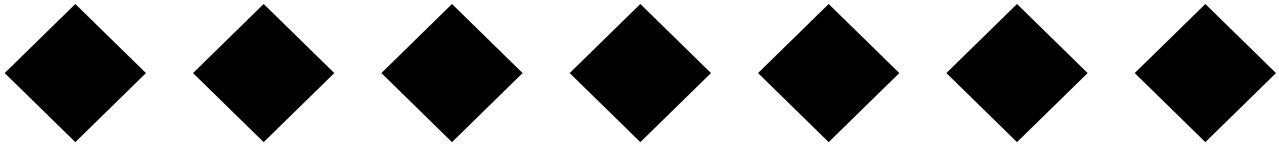
Tucson Quilters Guild

EMAIL LIST: The Guild now has an email list for easy communication with the members. Please log into the protected area of the website and put your name and email address into the box at the top of the page. After doing this, you will receive an email. You must click on the link after making the link into one long line. If this works, you will receive another email saying you were successful. If you have any problem with this, email me at quilter@tucsonquiltersguild.com. Meg Silvern

New Member Bee ♥ The New Member Bee at Cactus Quilts on Thursday, May 16th was a big success! We had 8 new members come, and 5 board members. We had great fun introducing ourselves and visiting.

The next New Member Bee will be on Tuesday, June 4th at Eagles Wing Quilting (AZ Vac & Sew), from 1:00 to 4pm. Please come and join us, bring a (hand-sewing) project to work on. If you feel like you are a new member, please come. If you feel like having some fun, come!

Mary Meserve, Membership Director
My email address is: MaryMes@aol.com
My phone number is: 520-465-3785



Tucson's Quilt Fiesta! is now on Facebook! Since this is FREE publicity for our show, ask your friends to 'like' the page. What can be better than free?

<https://www.facebook.com/#!/pages/Tucsons-Quilt-Fiesta/121887434544473?fref=ts>

The Guild Basics

Who:	All Members
What:	Business Meeting —First Wednesday of every month in the Church Classroom General Meetings - Second Wednesday of the month in the morning or the Tuesday evening preceding the second Wednesday - in the Parish Hall.
When:	Business Meeting — 9:30 AM ~ 10:30 AM General Meetings: Tuesday Evening—7:00~9:30 PM. Wednesday—9:30 AM~12:00 PM
Where:	St Frances Cabrini Church 3201 E. Presidio Near Fort Lowell and Country Club
(How): Parking	Guild members are asked to refrain from parking in the spaces in front of the Parish office; the Church wants these spaces to remain open for Church members who have business to attend to in the office. This is the small building to the east of our meeting room. PARKING NOTICE: Tuesday evening attendees: The Church's Family Classes are in session again, so PLEASE DO NOT PARK IN THE FRONT LOT. Use the side or back lot.
Why:	Come to get involved with all aspects of the Guild, to make new friends, learn new quilting skills, share, but most of all, to have FUN .

TQG BOARD AND COMMITTEES

◆	President	Reilly Zoda	sekmet73@cox.net
	Vice President	Sally Dickinson	749-9815
	Endowment/ Donations	Marie Morris	6230123
◆	Membership	Mary Meserve	465-2785
	Member at Large, Evening	Kathy Harris	370-4323
	Member at Large, Morning	Esther Ames	444-9729
	Programs	Kathy Barton	903-8642
◆	Programs	Mary Blount	818-6409
	Quilt Show Co Director	Jean Biddick	749-3022
	Quilt Show Co Director	David Kuskulis	349-7623
◆	Secretary	Joline Albaugh	822-1485
	Treasurer	Cathy Dargel	746-9246
	Bears	Christine McCollum	748-9165
◆	Bees	Ruth Martin	682-3846
	Corresponding Secretary	Mary Meserve	465-2785
	Finance	Marie Morris	623-0123
◆	Guild Pins	Colleen Babcock	405-5478
	Guild Pins	Joan Swanson	297-8433
	Historian	Cathy Dargel	746-9246
	Holiday Block Exchange	Shari Thompson	834-4245
◆	Hospitality	Christine McCollum	748-9165
	Library	Donata Pfisterer	760-0309
	Library	Kathryn Wald	749-4772
◆	Newsletter	Margaret Newman	982-1925
	NQA	Kathy Harris	370-4323
	Pattern of the Month	Evelyn George	325-0166
◆	Quilt A Thon	Colleen Babcock	405-5478
	Quilting for Others	Mary Bazzano	297-9576
	Raffle Quilt 2014 & 2015	Karen Fisher	572-8825
◆	Website	Meg Silvern	572-1984



Pattern of the Month - June 2013

by Evelyn George

"Right and Left Pinwheels"

6" finished block size



This is an old traditional block, dating to the 1930's or earlier. Originally made with templates, it can be made quickly today with rotary cutting. Several different designs are possible with these blocks, depending on choice of fabrics, and whether you sew the blocks directly together, or put sashing or alternate blocks in between. ***The following directions make 2 blocks -- one spins right and one spins left. They work well together in a quilt.***

Cutting

Cut 2 $4\frac{3}{4}$ " squares Medium print, for block Centers

Cut 2 $4\frac{3}{4}$ " squares each, Light and Dark, for Corner Triangle Units

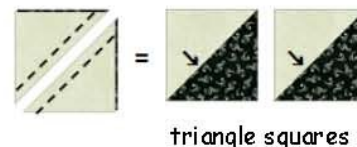
Corner Triangle Units

Draw a diagonal line from corner to corner on the *wrong* side of the Light squares.

Place light square on top of Dark, *right sides together*.

Stitch $\frac{1}{4}$ " away from the line, on both sides of the line. Cut apart on the drawn line to make two triangle squares. Press seam allowances toward the dark.

Repeat with the other light and dark square, to make a total of 4 triangle squares.



triangle squares

Cut each triangle square in half diagonally, cutting *across* the stitched seam as shown below.



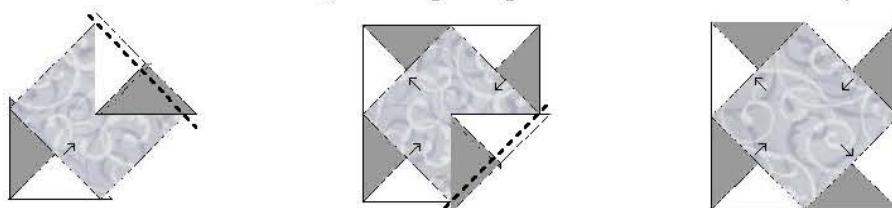
2 Corner Triangle Units

One of the Light/Dark triangle units will have Dark on the right; the other, Dark on the left. ↑

Place the four right-handed Corner Triangle Units in one stack, along with a Center square; and the four left-handed ones in another stack, with a Center square. Each stack will make one block.

Block Construction

Make sure the 4 Triangle Units in each block are either all right or all left. Fold Center square in quarters, and lightly press a small crease at middle of each side (this is to match with center seams in the Triangle Units). Place Triangle Units on two opposite sides of the Center square, with right sides together, matching center seams with fold mark. The triangles are slightly oversized, so there will be extra fabric extending on each end; just match the centers, and stitch a $\frac{1}{4}$ " seam. Press seams *toward center square*. Add Triangle Units on other two sides; press these seams *toward corners of block*. (Extending triangles will be trimmed off when you square up the block.)



pressing shown by arrows

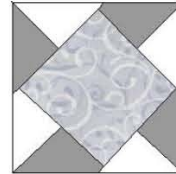
Right and Left Pinwheels, cont'd.

Sew second block using the other group of Triangle Units. You will now have a right hand block and a left hand one; they are slightly oversize, so use your $6\frac{1}{2}$ " square-up ruler to trim them to size. Keep corners of ruler aligned at diagonal seam lines, making sure to leave a $\frac{1}{4}$ " seam allowance on sides of block, extending beyond points of Center square. Trim off edges, to make the block $6\frac{1}{2}$ " square.

seam allowance extends $\frac{1}{4}$ " beyond points →

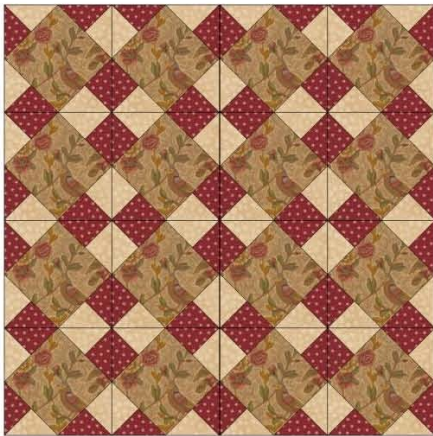


Right Hand Pinwheel

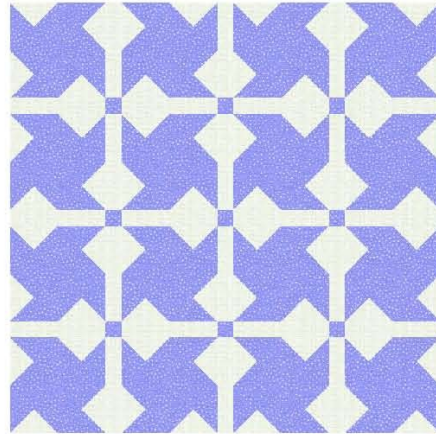


Left Hand Pinwheel

Below you can see how alternating left and right 3-color blocks might look in reproduction fabrics, set directly together (not particularly interesting; and there are easier ways to get this result!):



Or, how about just 2 colors, and add 1" sashing? (these are also alternating left and right blocks):



How about a scrappy interpretation? (My favorite!)

Cut 48 $4\frac{3}{4}$ " squares (4 each of 12 different colors)

White background (cut 24 $4\frac{3}{4}$ " squares)

Make 24 pinwheel blocks (a right and left of each color)

Cut 24 $6\frac{1}{2}$ " plain white squares to alternate with pinwheels.

Randomly arrange left and right versions, distributing colors.

Add 3" borders (cut $3\frac{1}{2}$ " for a quilt about $42" \times 54"$).

So many different looks! What will you do with this old favorite?

