



# FIESTA NEWS!

**Business Meeting** *Wednesday, May 1, 2013 9:30 AM*  
**General Meetings** *Tuesday, May 7, 2013 7:00 PM*  
*Wednesday, May 8, 2013 9:30 AM*

## Rock Out with Esterita Austin in May

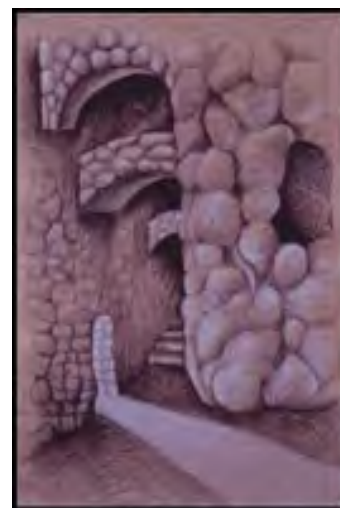
Before moving to Tucson in 2010, I lived in the San Francisco Bay Area and was a member of the Santa Clara Valley Quilter's Guild. During that time I was fortunate to take a workshop offered by our May speaker, Esterita Austin. What I remember most about this class is that the students loved it so much that we all vowed to complete our projects before the next Guild meeting. What a sight it was when 20 people stood up for Show and Tell with our "Rock, Wood, Water" projects all done in different fabrics; alike but yet so different.

What a testament to the teaching talents of Esterita herself! Internationally known for her portraiture and stone series as well as her mono printing techniques, Esterita's work has been published in numerous periodicals and books. The use of textural and dimensional imagery has given her work a very unique style. The addition of painted highlights to many of her works is equally amazing.

Esterita's favorite venue is an annual retreat held in the hills of Tuscany. Here she teaches not only art quilting, but painting and gourmet cooking as well. So maybe we aren't Italy but we do have some pretty spectacular mountains and desert landscapes here in Tucson so now it's our turn to inspire Esterita.

—Kathy Barton, Co-Director

<http://esteritaaustin.com/>



## President's Message

Hello Fellow Members! Every month, when I finish up my letter to you, I wonder what I can share next month... but, something always seems to come up and this month was no exception...

There was a concern expressed by a recent new member that the guild was too large.

I have to say, it kind of floored me! One of the things I really brag about TQG is just how many members we have! I know my non-quilting friends here in Tucson, plus my fellow quilters back in Massachusetts, are pretty impressed with just how large a group we are.

However, I do understand how a new member can feel. Coming into a meeting, knowing no one, sitting down, kind of alone, in a sea of people who all seem to know each other... a little scary!

So, let's look at how we can solve this problem...

Bees, Bees, Bees! Join one that's open in your area. If there isn't one, *start* one. If you start small, you can grow. Talk with Ruth Martin, our Beekeeper! She can answer any questions you have and she's wonderful to work with!

Join a committee... Bears may still need a chairman with a few helpers. When you join a committee you often need to get help from some of the more experienced members. You may not become BFFs, but you'll know people and they'll know you...

Work on the show. Hanging and take-down are really a lot of fun. There's a strong sense of camaraderie and many hands make light work, or something like that! The feeling of accomplishment you get, seeing that enormous room become an art gallery of our wonderful quilts, has to be experienced to believe!

Perhaps we should come up with an easier way to 'mark' our new members. That way, those of us who've been in for a while, can find them easier... we'll work on it. 'Course that puts the onus on the older members, (even if they're young) to make the effort to go up and get to know the newer members.

Mary's **New Member Bees** should be a big help! Join us at the Cactus Quilt Shop on May 16th, from 1:00 to 4:00pm.

Any other ideas? E-mail me [sekmet73@cox.net](mailto:sekmet73@cox.net).

Remember that the monthly meetings are for sharing the business of the Guild and learning from a National/International level speaker and teacher. Small guilds usually can't afford to do these 8 times a year.

Be glad that you're a member of our wonderful Tucson Quilters Guild!

See you at the meeting!

Reilly



# Tucson Quilters Guild

## PRESIDENT'S CHALLENGE

The challenge this year will be: **IDIOMATIC EXPRESSIONS!**

Sally came up with the idea and after some thought I fell in love with it. We'll have some lists of expressions available at the meetings or you can look them up on-line. Pick one and translate it into a quilted graphic representation.

**There's been some question about the size of the President's Challenge Quilt.** The total size is 96 inches around the perimeter. Any configuration that works like: 12" x 18" x 30" x 36" anyone???

Have fun! I can't wait to see what y'all come up with!  
Reilly

Check out this website: <http://www.idiomsite.com/>

The last straw ♥ Turn a blind eye ♥ Wag the dog ♥ You are what you eat  
Scot-free ♥ Rome was not built in one day ♥ Out of the blue



3949 E 29<sup>th</sup> St., Ste 701  
Tucson, AZ 85711  
520-790-7041

[www.azvacandsew.com](http://www.azvacandsew.com)  
[www.eagleswingsquilting.com](http://www.eagleswingsquilting.com)



**First Time Ever Event in Tucson --- You Don't Want To Miss This Incredible Event!**

## MOTHER'S DAY 1¢ Sewing Machine Sale

Purchase one of "13 Select Models" in stock at MSRP & get a second sewing machine of equal or lesser value for **ONE CENT!** Or Shop with your Mom, daughter or "Best Friend". Just pay MSRP for the 1<sup>st</sup> machine and 1 cent for the 2<sup>nd</sup> machine. Cabinet Specials also Available!

Janome – Elna -- Necchi



**3 DAYS ONLY** May 10<sup>th</sup> & 11<sup>th</sup> 9am – 9pm; May 12<sup>th</sup> Noon – 5pm

*Sorry, during this sale "Trade-In's" will NOT be taken.*

*(Including Mother's Day)*

*"It's Your Bag" Saturday \* 4<sup>th</sup> Saturday of each month \* Come Join Us!*

## Quilt Fiesta!

**Betty Hayden Award** I'd like to welcome all our new members. If you are also new to quilting, I'd like to tell you about a special quilt show award. Every January the Guild members vote for this award that's just for new quilters. Named for Betty Hayden, one of our Guild's founding members, the award is to encourage new quilters to explore more of the world of quilting. To be eligible the quilt must be the first quilt entered in any quilt show and the entire quilt (piecing, appliqué, quilting, binding...) must be made by one person who has started quilting in the last 3 years. For questions or more information see the quilt show packet or contact Alice Wilder at [wilderonline@comcast.net](mailto:wilderonline@comcast.net).

**Bed Turning** It's that time of year...to search for treasured quilts. Do you own a piece of quilt history? Help get ready for **Quilt Fiesta's 2014 Bed Turning**. Remember, quilts need not be "family;" those from the back of a pick-up, the flea market or your favorite antique shop also are welcome.

In case a definition for bed turning is needed, the 2008 July-August issue of *Quilters Newsletter* has a good one. It describes one as "...a traditional method of presenting quilts to an audience. A number of quilts are layered on a bed, often in the order of the date made. The quilts are "turned" and held up one at a time for the viewers to see while a lecturer talks about each one."

Applications to submit a quilt for bed turning will be available soon. The submission deadline this year is either of the October *Guild* meetings or mailed to Sue Franklin, postmarked by October 12th. Contact Sue at 520.825.3962 or 520.490.4721 (cell) or email her at ([suevette63@comcast.net](mailto:suevette63@comcast.net)) with questions. Thank you!

The Ed Seright Award has been discontinued. We will be featuring three guild members during the 2014 show. If you'd like to nominate someone for this honor, please give the name(s) to Mary Meserve at [marymes@aol.com](mailto:marymes@aol.com).

It is time to start thinking about the 2016 raffle quilt. We are looking for an original design and will be selling patterns for the quilt at the show. If you would like to have a design considered for the 2016 raffle quilt please submit your design to Jean, Dave or Reilly by November. Designs will be voted on during the December meetings.

The quilt show packet for Quilt Fiesta 2014 will be available by the end of April on the Guild's website in the protected area. Print as many copies of the packet and entry forms as you need. Read page 4 of the packet to note the major changes in the quilt categories and descriptions. If you are unable to print from the website, email or phone me and I will print a copy and have it available at the next Guild meeting. You also can bring a #19 envelope (4" x 9-1/2") self addressed stamped envelope (at least 2 stamps) and I will mail a packet to you. Ginny Dove, 887-9284 or [gdovecat@aol.com](mailto:gdovecat@aol.com).

The demo committee is still looking for ideas for demos and presenters for the January 2014 quilt show. Please contact Reilly ([sekmet73@cos.net](mailto:sekmet73@cos.net)) or Connie ([germanconnie@gmail.com](mailto:germanconnie@gmail.com)) if you have any suggestions. Thanks!

# Quilt Fiesta!

**Small Quilt Auction News ♥** It's that time again! Time to think about the Small Quilt Auction for 2014. In the second auction sponsored by the Guild, we sold 120 quilts. The good news is that several members (bless them!) donated multiple entries for the auction. The bad news is that we did not achieve Sally's goal of 20% of our membership participating. Let's all think about increasing our participation rates. (In the category of blessed members, the Pacific Rim Bee is planning to make the 2014 Small Quilt Auction the beneficiary of their 2013 challenge. Other bees?)

The World Care Civilian Emergency Relief Center has been selected as the recipient of the proceeds from our 2014 auction. Although this organization provides disaster relief across the country and around the world, approximately 85% of their funds stay locally to benefit Tucsonans. For further information about this organization, see <http://www.worldcare.org/>.

Again this year we are asking members to make and donate a small quilt for the auction to be held as part of the Quilt Fiesta! in January 2014. Last year we attempted to provide suggestions for themes based on what sold well in the 2012 auction. Southwest themes were suggested and, lo and behold, they weren't nearly as popular in 2013. Our only suggestion for 2014 is to remember that these are "small" quilts, destined to be wall hangings. Embellishments and fine quilting really add to the visual appeal of these pieces.

Quilts may be turned at any 2013 guild meetings with the deadline being the November 13, 2013 general meeting, or postmarked by November 13 if you are unable to attend. Quilt size should be no bigger than 80 inches around the perimeter and each quilt needs to have a hanging sleeve across the top of the quilt. Entry forms are available on the website as well as from the committee at the meetings. All quilts need to have the entry form completed and attached with a straight pin when turned in. — Barbara Heiman, Small Quilt Auction Chairperson.



**RAFFLE TICKETS** The Raffle Tickets will be available at the RAFFLE TICKET table beginning with the MAY general meetings. Along with the tickets will be photo of the Raffle Quilt.

We, as members, are each asked to purchase or sell one packet (\$10) of tickets per year. The price of the tickets is \$1 each or sets of 6 for \$5. When sold, turn in the stubs (with name and phone number of purchaser) along with the money to me. You may do this at the RAFFLE TICKET table at the monthly general meetings or mail them to me at my home address: 3730 N Allwood Place, Tucson, AZ 85750.

Additional tickets are always available either at the RAFFLE TICKET table or by contacting me personally. I will be happy to send out additional tickets any time by mail.

You will be surprised at how easy these tickets are to sell. Just show the picture of the quilt to your friends, family and co-workers and they will grab them up. Why not pick up several packs the first time and not run out. If you do not sell all that you pick up, you can always return unsold tickets to me. You are only responsible for one pack per year.

PLEASE MAKE AN EFFORT TO PICK UP YOUR PACKETS EARLY, and remember that we do award prizes for most tickets sold by a member. PATTY KRUSE 885-2069 [krusequilter@yahoo.com](mailto:krusequilter@yahoo.com)



## GUILD NEWS, NEWS, NEWS

### LIBRARY INFORMATION

**Tuesday Evening Meetings:** Open from 5:30pm to 7pm only.

**Wednesday Morning Meetings:** Open from 8:30am to 9:30am and during the break.

**To renew books:** Call Donata Pfisterer the day before the meeting at 733-9557 or email her at: [donatap@photonengr.com](mailto:donatap@photonengr.com).

The submission deadline for articles for the June Newsletter is Wednesday, May 22, 2013. Articles should be sent to : [newsletter@tucsonquiltersguild.com](mailto:newsletter@tucsonquiltersguild.com)  
Newsletter Editor is Margaret Newman



## Celebrate Quilt Camp and Show June 12-15, 2013 Flagstaff, AZ



Information and registration forms on-line at  
[www.celebratequilts.com](http://www.celebratequilts.com)

Phone: 928-526-9403 [chocolatequiltco@gmail.com](mailto:chocolatequiltco@gmail.com)

Classes and events at the Radisson Woodlands Hotel

\*Daily classes with national and regional quilt teachers  
\*Lectures and Forums \*Evening programs\*



### Advertising

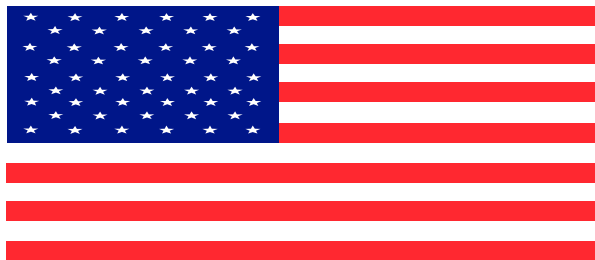
Members: \$5.00 for small want ads for  
Quilting/sewing related items

Quilt related businesses:

\$25 business card size

\$50 1/4 page

\$100 half page



## BEES, BEES, BEES—Updated!

### NEW MEMBER BEE

Contact: Mary Meserve, 520-465-3785  
Monday, 4/29/13 @ The Quilters Market  
Thursday, 5/16/13 @ Cactus Quilt Shop



### CENTRAL AREA:

**Art Quilters** Contact: Barbara Hall, 622-9268,  
or [rbarber21@cox.net](mailto:rbarber21@cox.net)

Where: Bella Quiltworks;

When: Third Wednesday at 10 AM

**Himmel Park** Contact: Ruth Campbell, 792-1639

Where: Himmel Park Library,

When: Third Wednesday at 6 PM

### EAST SIDE:

**Evening Eastside Bee** Contact: Connie Weigel, 760-7728  
or [xuxala@msn.com](mailto:xuxala@msn.com)

Where: Unity Peace Church, 1515 S Eastside Loop

When: First Thursday of the month 6:30-9PM

**Siesta Bee** Contact: Nelle Starr, 886-4123

Where: Members' homes (Northeast) call for directions

When: 3rd Tuesday of the month 1pm

### GREEN VALLEY:

**Hexies Bee** - English Paper Piecing

Contact: Carole Sullivan, 520-762-8652

Where: Friends Indeed Community Center, Green Valley, AZ.

When: First Wednesday of each month, noon-3:00pm.

**North of the Border** Contact: Babs Phillips, 393-6557

Where: M & I Bank 270 W. Continental Green Valley,

When: Thursday 9:30 - Noon

### NORTHWEST:

**Quilting for Others** Contact: Mary Bazzano, 295-9576

Where: Cactus Quilt Shop,

When: Third Wednesday, 9:30 – Noon

Theme: Tucson Charities

**Material Girls** Contact: Caroline Schau, 297-9965,

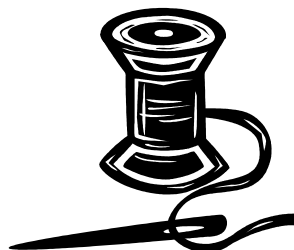
[CarolineSchau@comcast.net](mailto:CarolineSchau@comcast.net)

Where: Rotate Homes

When: First and Third Thursdays at 1 PM

**Quilting After Dark:** Call Karen Fisher at 572-8825 or email her at [karen@karenfisherartquilts.com](mailto:karen@karenfisherartquilts.com) to get more details.

Discovery is seeing what everybody has seen  
and thinking what nobody has thought.



## Tucson Quilters Guild

The first several quilts show that the Guild put on were done at the Cloth World located at the corner of Wilmot & Broadway. The Guild borrowed quilt frames from the Arizona Historical Society, until we built our own.

Thank you **Mary Bazzano, Kathy Harris, Meg Silvern and Shari Thompson** for getting the correct answer. Please go to Mary Meserve at membership to get your prize at the next meeting!

This month's question is... **Why was there no quilt show in 1979?**

Again, e-mail me with the answer before the next newsletter deadline and you too can win a little prize!

New Members... This whole quiz seems hardly fair! If I didn't have the answer sheet, I wouldn't have a clue!

But don't worry... you also have a chance! Go up to members during the meeting and ask! That's *not* considered cheating... plus you'll get to talk to some really cool people!

If we get more than 5 correct answers, we'll draw names... seems fair? Contest runs from Newsletter to Newsletter deadline, usually the 3<sup>rd</sup> Wednesday of the month.

Good Luck, and I hope to hear from many of you!

Reilly

A little story that fills out last month's question:

Reilly,

I'm sure many quilters have already sent you the correct answer to your question but let me tell you my story.

I moved here in Oct 1981 and soon learned of the TQG quilt shows. The first one I went to was at Cloth World on the east side. After a few years there they moved to a Woman's group near Wilmot and Speedway (I think). Finally they moved to TCC, first upstairs and then downstairs.

I wanted to join the TQG but they met Wednesday mornings and I had to work. Finally in 2003 I had four weeks of vacations a year so decided to join and take a half day vacation a month to attend the meetings. I figured I could finally use six days of vacation a year for my first love.

Joey Nakagawa



# Tucson Quilters Guild

A new committee has been formed to keep track of exactly what the Guild does with their donations, time and expertise. The compiled list for the Guild's fiscal year (2012/2013) is below. It is outstanding what all of the Guild's members do for others in need through out the year. To see all of it on paper will really amaze everyone. Thank you for all of your hard work. The list will be in the newsletter quarterly through out the coming fiscal year. –Joan Swanson

<b>Public Records</b>		<b>Tucson Quilters Guild</b>	<b>March 1,2012 – February 28, 2013</b>
<b>VA Hospital</b>		Quilts and heart pillows donated to the veterans.	
<b>Peppi's House</b>		Hospice – quilts and colorful pillow cases donated for patients use.	
<b>Habitat for Humanity</b>		Donated bed quilts for a new home owner.	
<b>Desert Dialysis</b>		Special pillow cases donated by guild members.	
<b>TMC</b>		Heart pillows for surgery patients.	
<b>Family Living Kare</b>		20 Pillow cases, 20 stockings and 10 quilts.	
<b>Tucson Community Food Bank</b>		Money from raffle of two quilts and canned goods.	
<b>Candlelighters</b>		Colorful pillow cases and Holiday stockings for children with cancer.	
<b>Teen Outreach</b>			
<b>Pregnancy service</b>		176 quilts donated from annual quilt-a-thon	
<b>Quilt for a cause</b>		Members donated around 200 quilts for auction. Proceeds to go for women's Cancer issues.	
<b>Aviva Children's Services</b>		250 yards of fabric and assorted remnants. 23 stuffed bears with clothes and quilts. 2 bags of fabric squares. 2 stuffed bear kits. 2 large handmade quilt tops.	
<b>February 2013</b>		One quilt donated to the Eric Hite Foundation to be raffled to raise funds for this foundation. Eric Hite was a police officer killed while on duty.	
		<ul style="list-style-type: none"> <li>●Permission given to the Green Valley Quilt Guild to sell tickets on their opportunity quilt. Proceeds from raffle to go to charity.</li> <li>●A \$1,000 Grant was given to Arizona Quilt Study Group to help in their efforts to promote and preserve quilt history in Arizona.</li> <li>●Guild members donated 121 small quilts to the Quilt Show to be auctioned off. Proceeds from the auction went to Tucson Quilt for a Cause that raises money for Tucson Medical Center and St. Elizabeth of Hungary Clinic to help eradicate breast and gynecological cancer.</li> <li>●One quilt donated to the Altar Valley School District (Elementary and Jr. High) to raffle. School located by Robles Junction (Three Points)</li> </ul>	
		<b>Totals for the year 2012/2013 were as follows:</b>	
		<ul style="list-style-type: none"> <li>●104 Quilts, 283 Pillow cases, 170 Stockings, 63 Heart pillows, 60 Charitable outreach programs provided by the education committee, this includes 44 Tucson Quilters Guild members volunteered.</li> <li>●An estimated 544 people participated in the charitable activities of the education committee.</li> <li>●Tucson Quilters guild members also dress and make small quilts for small bears. These are given to children by policemen and firemen after tragic circumstances.</li> <li>●Several guild members donated their expertise and time in teaching young people how to quilt and worked closely with SAAVI teaching them about fabric and how to quilt.</li> <li>●121 small quilts were donated for the Small Quilt Auction, and \$4,000 was raised and given to Quilt for a Cause.</li> </ul>	
		The members are always ready and willing to full fill requests from the community for those in need.	



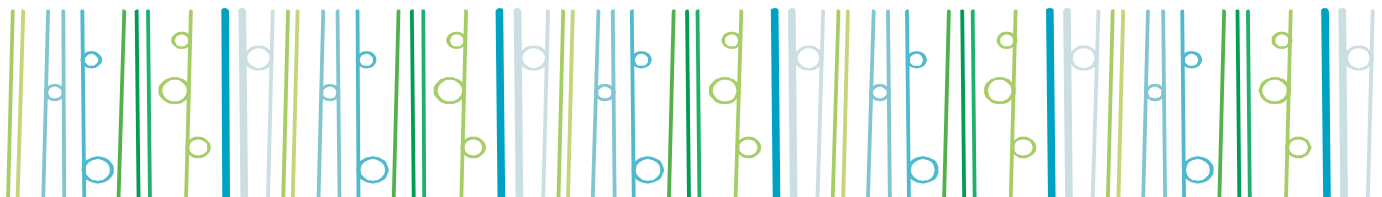
# Tucson Quilters Guild

Save the date, this year's Quilt-a-thon will be August 13 and 14, 2013 and we'll need lots of help. Our charities this year are Sr. Jose's Homeless Shelter for Women and the Erik Hite Foundation. We'll be making quilts for women to cuddle in next fall and to comfort kids. Send me an email if you're interested in helping with making kits this summer [cjquilts@att.net](mailto:cjquilts@att.net). We'll have some kits to hand out at the April and May meetings so that we'll have quilt tops ready for tying in August. We'll have sign-up sheets at the June and July meetings.

Collection of Vintage Linens needs a good home. Large tablecloths and other items that the owner does not want to move with upcoming relocation out of state. Contact Pat Sanchez at 744-2181, [pasanchezaz@hotmail.com](mailto:pasanchezaz@hotmail.com) who can get you in touch with the owner.

**Holiday Block Exchange:** Quilting Daily is an online FREE email I receive every weekday. If you find yourself in "quilters creative block" - that syndrome when nothing inspires you - check out this site: <http://www.quiltingdaily.com>.

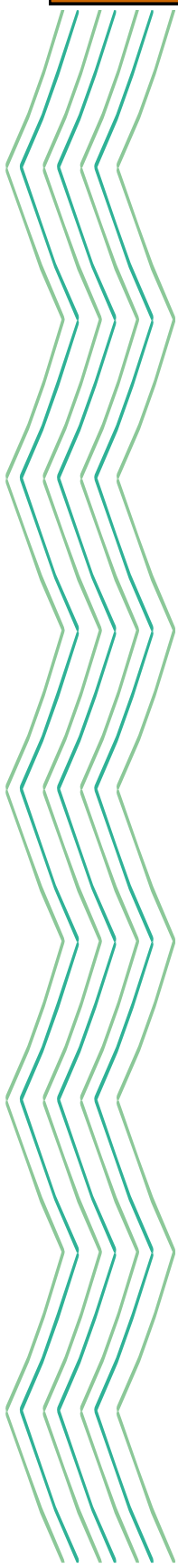
I hope to do some prayer flags, perhaps even some new fresh ideas on piecing for a small quilt. Your Holiday block can be a chance to try something new!



## The Guild Basics

<b>Who:</b>	All Members
<b>What:</b>	<b>Business Meeting</b> —First Wednesday of every month in the Church Classroom <b>General Meetings</b> - Second Wednesday of the month in the morning or the Tuesday evening preceding the second Wednesday - in the Parish Hall.
<b>When:</b>	<b>Business Meeting</b> — 9:30 AM ~ 10:30 AM <b>General Meetings:</b> Tuesday Evening—7:00~9:30 PM. Wednesday—9:30 AM~12:00 PM
<b>Where:</b>	St Frances Cabrini Church 3201 E. Presidio Near Fort Lowell and Country Club
<b>(How):</b> Parking	Guild members are asked to refrain from parking in the spaces in front of the Parish office; the Church wants these spaces to remain open for Church members who have business to attend to in the office. This is the small building to the east of our meeting room. <b>PARKING NOTICE:</b> Tuesday evening attendees: The Church's Family Classes are in session again, so PLEASE DO NOT PARK IN THE FRONT LOT. Use the side or back lot.
<b>Why:</b>	Come to get involved with all aspects of the Guild, to make new friends, learn new quilting skills, share, but most of all, to have <b>FUN</b> .

## TQG BOARD AND COMMITTEES



President	Reilly Zoda	sekmet73@cox.net
Vice President	Sally Dickinson	749-9815
Endowment/ Donations	Marie Morris	623-0123
Membership	Mary Meserve	465-2785
Member at Large, Evening	Kathy Harris	370-4323
Member at Large, Morning	Esther Ames	444-9729
Programs	Kathy Barton	903-8642
Programs	Mary Blount	818-6409
Quilt Show Co Director	Jean Biddick	749-3022
Quilt Show Co Director	David Kuskulis	349-7623
Secretary	Joline Albaugh	822-1485
Treasurer	Cathy Dargel	746-9246
Bears		
Bees	Ruth Martin	682-3846
Corresponding Secretary	Mary Meserve	465-2785
Education		
Finance	Marie Morris	623-0123
Guild Pins	Colleen Babcock	405-5478
Guild Pins	Joan Swanson	297-8433
Historian	Cathy Dargel	746-9246
Holiday Block Exchange	Shari Thompson	834-4245
Hospitality	Christine McCollum	748-9165
Library	Donata Pfisterer	760-0309
Library	Kathryn Wald	749-4772
Newsletter	Margaret Newman	982-1925
NQA	Kathy Harris	370-4323
Pattern of the Month	Evelyn George	325-0166
Quilt A Thon	Colleen Babcock	405-5478
Quilting for Others	Mary Bazzano	297-9576
Raffle Quilt 2014 & 2015	Karen Fisher	572-8825
Website	Meg Silvern	572-1984

## Tucson Quilters Guild

**New Member Bee ♥** The first New Member Bee was on Monday, April 29th at The Quilter's Market. We had lots of fun! We had some yummy snacks, chatted quite a bit, and we all had a great time.

The second New Member Bee will be on Thursday, May 16th at Cactus Quilt Shop, from 1:00 to 4pm. Please come and join us, bring a (hand-sewing) project to work on.

Mary Meserve, Membership Director  
My email address is: [MaryMes@aol.com](mailto:MaryMes@aol.com)  
My phone number is: 520-465-3785



**QUILTING FOR OTHERS ♥** Thanks to our Guild members who have made quilts and to those of you who have quilted tops for us this winter. Because of all your work since February we have been able to give away to the following:

Oncology  
Peppi's House  
Life Care Nursing Home  
VA Hospital  
Reachout  
Habit for Humanity



Keep up the good work and have a great summer.  
Mary Bazzano, Quilting for Others Committee



Online quilt entry  
opens Nov. 15th.  
Online class registration  
opens Jan 10th.

\$28,000 in awards for judged quilt competition including:  
*NEW* Modern Quilting category!

♥  
Over 100 machine-quilting classes

[www.hmqs.org](http://www.hmqs.org)

# Tucson Quilters Guild

## **Tentative New Project**

This is a new idea that came from Tucson Medical Center's Volunteer Coordinator via Evelyn George.

Briefly, the project would be teaching Moms of the preemies in the NICU to make a quilt for their baby during the long hours that they sit at the bedside.

At this point it needs a lot of brainstorming and working things out with TMC.

Would someone like to work on this? I'm a retired NICU nurse from TMC and would be willing to meet with someone who'd be interested in exploring the idea and utilizing my contacts in my old unit to give us some input.

Think about it please! It really could be a great thing for the babies, their Moms and the Guild.

Reilly

[Sekmet73@cox.net](mailto:Sekmet73@cox.net)

## **Arizona Quilters' Hall of Fame - Arizona Quilt Documentation Project – Tucson**

Cathy Washburn and Carole Collins are the newest members of the greater Tucson documentation group. The second training session, held on April 9, didn't include documenting quilts. Instead, most members received an intensive document review by the visiting Phoenix team.

The next training event will be May 14th. For information about quilt documentation or if you're interested in joining the team, please call or email Sue Franklin at 825-3962;

[suevette63@comcast.net](mailto:suevette63@comcast.net).

The group's first public documentation is scheduled for June 8<sup>th</sup> between 10 am and 3 pm at the Arizona History Museum. Call or email Terry Gryzb-Wysocki at 749.9326; [terry-gw@mindspring.com](mailto:terry-gw@mindspring.com) to reserve a space for your quilt(s) documentation.

**EMAIL LIST:** The Guild now has an email list for easy communication with the members.

Please log into the protected area of the website and put your name and email address into the box at the top of the page. After doing this, you will receive an email. You must click on the link after making the link into one long line. If this works, you will receive another email saying you were successful. If you have any problem with this, email me at

[quilter@tucsonquiltersguild.com](mailto:quilter@tucsonquiltersguild.com). Meg Silvern

Tucson's Quilt Fiesta! is now on Facebook! Since this is FREE publicity for our show, ask your friends to 'like' the page. What can be better than free?

<https://www.facebook.com/#!/pages/Tucsos-Quilt-Fiesta/121887434544473?fref=ts>





## Pattern of the Month - May 2013

by Evelyn George

### "A Look at Modern Quilts"

Everywhere you look there are Modern Quilts popping up! What is it that makes a quilt "modern?" Is it clean, simple lines and large, bold geometric designs? Solid colors, neutrals like white, gray or black? No borders? Simple quilting? It could be any of these, or none—but perhaps it could be best defined as "No rules, no frills, spontaneous design and a fresh look." Would you like to try a modern quilt, either with or without a pattern? Just use your own ideas, or try this very simple approach:

Cut width of fabric (WOF, approx. 42") strips from plain white and one (or more) solid colors or "modern-looking" prints, and sew them together into long strip sets. Cut the strip sets into square or rectangular blocks. Cut additional strips of white for sashing and borders, if you wish, and just arrange the blocks as you think they look best, and when you are pleased with the way it looks, sew everything together. Then quilt and finish it in a simple manner.

The quilt shown at upper right is made from strips of several different widths. Blocks finish at 9" and the quilt is about  $57\frac{1}{2}$ " x 65." For a similar size quilt (your choice of fabrics, of course), cut WOF strips in these sizes:

- Blocks:** Red strips  $1\frac{1}{2}$ ",  $2\frac{1}{2}$ " and  $3\frac{1}{2}$ " x WOF (cut 4 of each size)  
 White strips  $1\frac{1}{2}$ " and  $2\frac{1}{2}$ " x WOF (cut 4 of each size)
- Sashing:** Cut 3 White strips  $3\frac{1}{2}$ " x WOF for vertical sashing  
 Cut 4 White strips 5" x WOF for horizontal sashing
- Borders:** Cut 5 White strips  $6\frac{1}{2}$ " x WOF for the top and side borders  
 Cut 2 White strips  $9\frac{1}{2}$ " x WOF for the bottom border

#### ***Yardage Requirements:***

*Red 1-1/3 yds. (incl. binding)*  
*White 3 yards*  
*Backing 3 yards*

Sew strips together in this order:

$1\frac{1}{2}$ " red;  $2\frac{1}{2}$ " white;  $2\frac{1}{2}$ " red;  $1\frac{1}{2}$ " white;  $3\frac{1}{2}$ " red. →

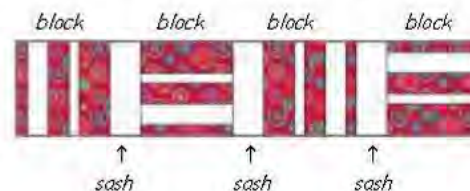
Press the seam allowances toward the red.

Make 4 strip sets. Press seams toward dark.



Measure width of your strip sets (if you used  $\frac{1}{4}$ " seams the width would be  $9\frac{1}{2}$ "). Yours might be a different width, that's OK! Cut each strip set into squares of *whatever* your width turns out to be -- for example, if the strip sets are  $9\frac{1}{4}$ " wide, cut  $9\frac{1}{4}$ " sections and they will be squares. (Make all the squares the same size.) You should get 4 blocks from each strip set, for a total of 16.

The blocks in this quilt are arranged in four rows of four blocks each. Each block has been rotated  $\frac{1}{4}$  turn counterclockwise from the previous one in the row. Arrange blocks as you wish in rows, and sew  $3\frac{1}{2}$ " wide vertical sashing strips between the blocks (as shown at right).



Piece 5" wide horizontal sashing strips and cut them to the length of the pieced rows. Sew strips between rows. Measure left and right sides of quilt, and piece two  $6\frac{1}{2}$ " wide border strips to measure that length. Sew to left and right sides. In the same manner, add the  $6\frac{1}{2}$ " top and  $9\frac{1}{2}$ " bottom borders. (In this quilt, horizontal sashing is wider than vertical sashing, and bottom border is wider than the other three. Is that modern?)

Does this give you some "modern" quilt ideas? Perhaps you'd like to substitute striped fabric for the pieced strip sets, or use several colors in the strip sets. Maybe you'd like to make larger blocks, or smaller ones, or try rectangular ones. There are really no rules, so why not follow your inspiration, and have fun making a modern quilt!

